



Operator's Manual

SCRUBTEC 770 S
SCRUBTEC 770 L
SCRUBTEC 784 S
SCRUBTEC 784 L
SCRUBTEC 795 S
SCRUBTEC 795 L

U.S. Patent No. 6,760,947; No. 6,105,192; No. 6,493,896 (Deluxe Machines)

READ THIS BOOK

This book has important information for the use and safe operation of this machine. Failure to read this book prior to operating or attempting any service or maintenance procedure to your ALTO machine could result in injury to you or to other personnel; damage to the machine or to other property could occur as well. You must have training in the operation of this machine before using it. If your operator(s) cannot read this manual, have it explained fully before attempting to operate this machine.

All directions given in this book are as seen from the operator's position at the rear of the machine.

For new books write to: ALTO, 2100 Highway 265, Springdale, Arkansas 72764.

**SCRUBTEC 770 / 784 / 795
Accessories - 2/05**

ACCESSORIES

<u>Description</u>	<u>Part No.</u>
Power Wand System Kit	10892A
ESP Recycle System Kit	10894A
Soft Caster Asm.	52127A
Care Kit	14607A
Squeegee Asm., Optional 74 cm (770 model only)	18818A
Drive Wheel, Foam Filled	59955A
<i>Imperial</i> Electric Parking Brake Kit	10684A
Battery Maintenance System	53390A

Optional Squeegee Blades

Machine	Blade	Type	Material	Length	Part No.
770	Inner	Optional	Urethane, Ribbed	65.7 cm	30951A
770	Inner	Optional	Urethane, Notched, 1.5mm	65.7 cm	30955A
770	Inner	Optional	Urethane, Ribbed	91.1 cm	30952A
770	Inner	Optional-Grout	Urethane, Notched 1.5mm	91.1 cm	30957A
784	Inner	Optional	Urethane, Ribbed	102.2 cm	30953A
784	Inner	Optional-Grout	Urethane, Notched 1.5mm	104.1 cm	30958A
795	Inner	Optional	Urethane, Ribbed	116.8 cm	30954A
795	Inner	Optional-Grout	Urethane, Notched 1.5mm	116.8 cm	30959A
770	Outer	Optional	Nitrile, Solid	71.4 cm	30938A
770	Outer	Optional	Nitrile, Solid	97.8 cm	30936A
784	Outer	Optional	Nitrile, Solid	107 cm	30937A
795	Outer	Optional	Nitrile, Solid	122 cm	30939A

Brushes:	Size	Description	Part No.
	43.2 cm	Poly	11424B
	43.2 cm	Grit-Heavy	11425B
	43.2 cm	Grit-Medium	11430B
	43.2 cm	Grit-Lite	10384A
	43.2 cm	Soft Nylon	10875A
	35.6 cm	Poly	11427B
	35.6 cm	Grit-Heavy	11426B
	35.6 cm	Grit-Medium	11431B
	35.6 cm	Grit-Lite	10383A
	35.6 cm	Soft Nylon	10874A
	48.3 cm	Poly	11434B
	48.3 cm	Grit-Heavy	11433B
	48.3 cm	Grit-Medium	11432B
	48.3 cm	Grit-Lite	10385A
	48.3 cm	Soft Nylon	11435B

Pad Drivers:	Size	Part No.
	48.3 cm	17524B
	43.2 cm	17520C
	35.6 cm	17521C



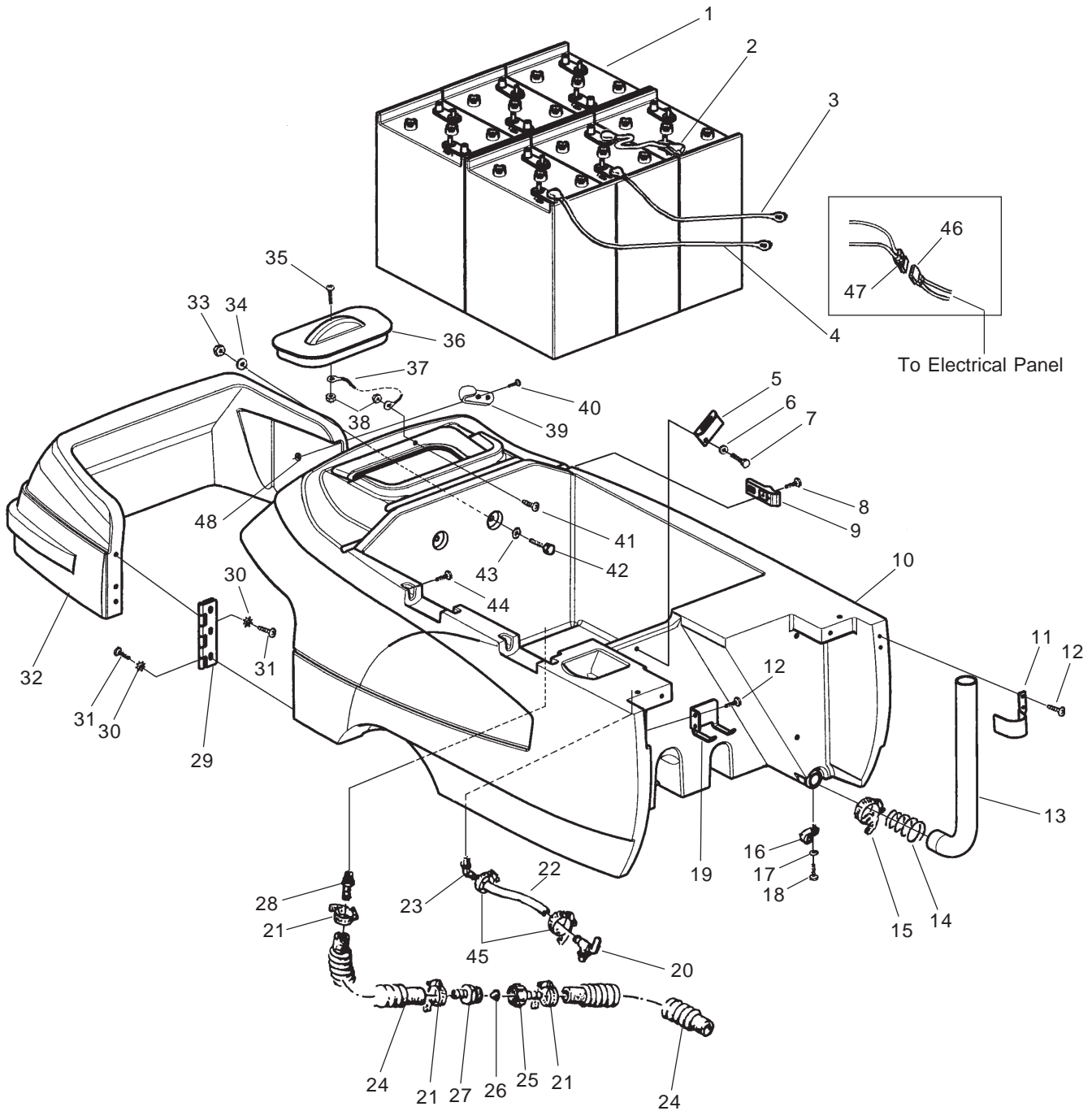
SCRUBTEC 770 S
SCRUBTEC 770 L
SCRUBTEC 784 S
SCRUBTEC 784 L
SCRUBTEC 795 S
SCRUBTEC 795 L

Section II
Parts and Service Manual

(70935A)

U.S. Patent No. 6,760,947; No. 6,105,192; No. 6,493,896 (Deluxe Machines)

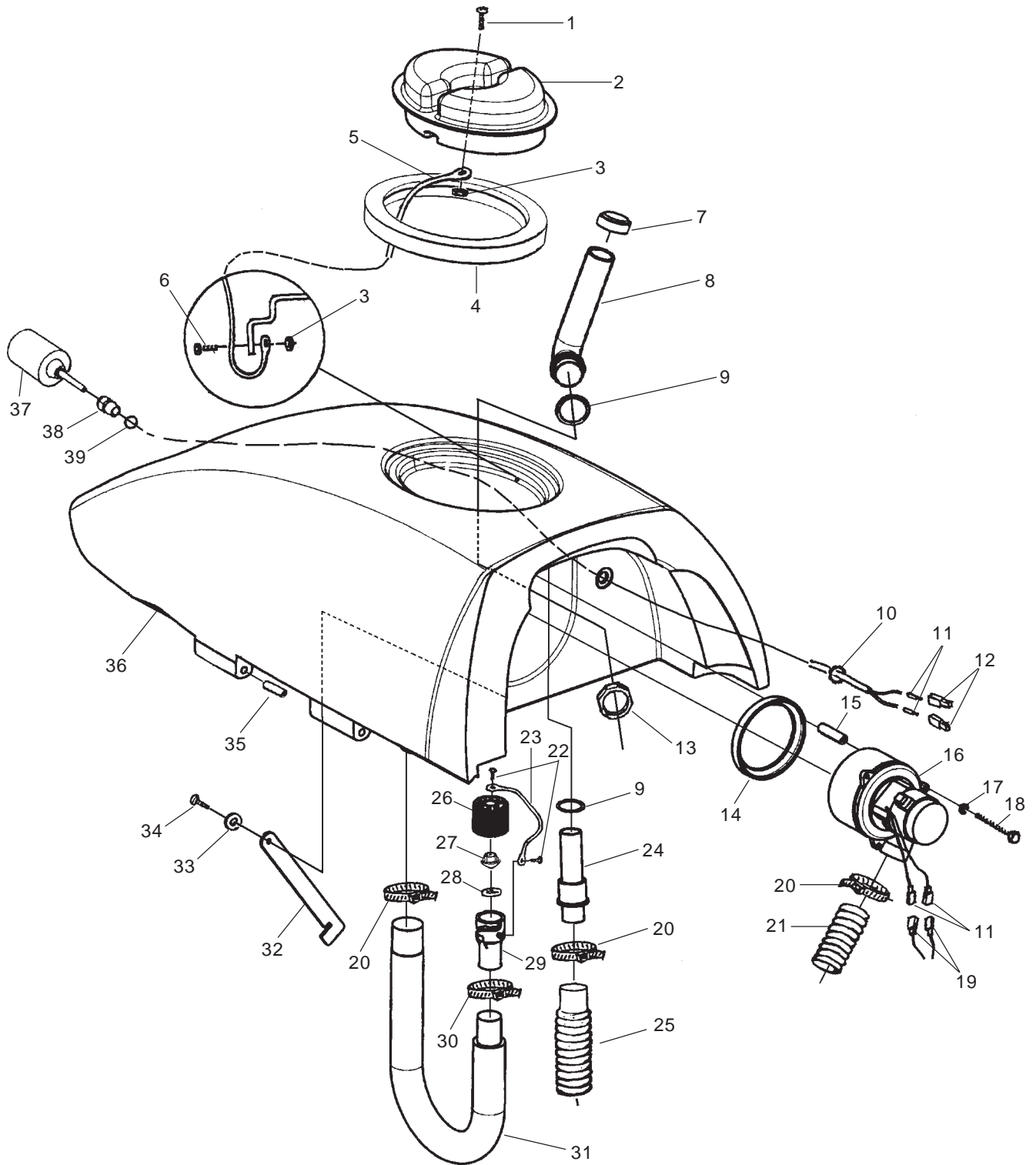
CLARKE TECHNOLOGY
SCRUBTEC 770 / 784 / 795
 Solution Tank Assembly Drawing 12/05



CLARKE TECHNOLOGY
SCRUBTEC 770 / 784 / 795
Solution Tank Assembly Parts List 12/05

Ref #	Part No.	Description	Qty
1	881317	Battery - 250 AH - 6 Volt	6
	891384	Battery - 330 AH - 6 Volt	6
2	842406	Series Cable - 9" ("S" Models)	5
	842406	Series Cable - 9" ("L" Models)	4
	40860A	Fused Cable ("L" Models)	1
3	40613A	Battery Cable, Black ("L" Models)	1
4	40612A	Battery Cable, Red ("L" Models)	1
5	61713A	Tank Support Bracket	1
6	170892	Washer, Lock 1/4	2
7	170915	Screw, 1/4-20 x 3/4 Hex	2
8	962027	Screw, 8-32 x 1/2 PN	2
9	50966A	Latch	1
10	30590E	Solution Tank	1
11	60480A	Hose Bracket	1
12	80108A	Screw, 10-24 x 1/2 PN	4
13	30598A	Drain Hose	1
14	51346A	Spring, Hose	1
15	872010	Hose Clamp	1
16	98465A	Clamp, Metal	1
17	980657	Washer, Lock 1/4	1
18	962139	Screw, 1/4-20 x 5/8 Hex	1
19	61590A	Hose Hanger Bracket	1
20	59614A	Battery Drain Valve	1
21	53571A	Hose Clamp	4
22	30453A	Hose	1
23	822802	Elbow	1
24	30445A	Solution Hose	2
25	50358A	Connector	1
26	838517	Filter Screen	1
27	830214	Hose Adapter	1
28	50359A	Solution Adapter	1
29	53568A	Hinge	1
30	980614	Washer, 1/4 External	6
31	85395A	Screw, 1/4-20 x 1/2 PN	6
32	30655A	Front Cover	1
33	81105A	Nut, 3/8-16 ESNA	2
34	980645	Washer, 3/8 Flat	2
35	962798	Screw, 10-24 x 1/2 PN	1
36	30498A	Solution Lid	1
37	38020A	Strap	1
38	920296	Nut, 10-24 ESNA	2
39	50966A	Keeper, Latch	1
40	930090	Rivet, 5/32 x 9.16 (Prior to DL0055)	2
40	85614A	Screw, 8-32 x 3/4 PN (starting w/DL0055)	2
41	962666	Screw, 10-24 x 3/4 PN	1
42	962522	Screw, 3/8-16 x 2 Hex	2
43	87054A	Washer, 3/8 Fender	2
44	80289A	Screw, 10 x 1/2 Tapping PN	2
45	50248A	Clamp, Hose	2
46	40856A	Cable, Electrical Panel ("S" Models)	1
	40857A	Cable, Battery Charger ("L" Models)	1
47	40855A	Cable, Battery ("S" Models)	1
48	81109A*	Nut, 8-32 SS Elastic Lock	2

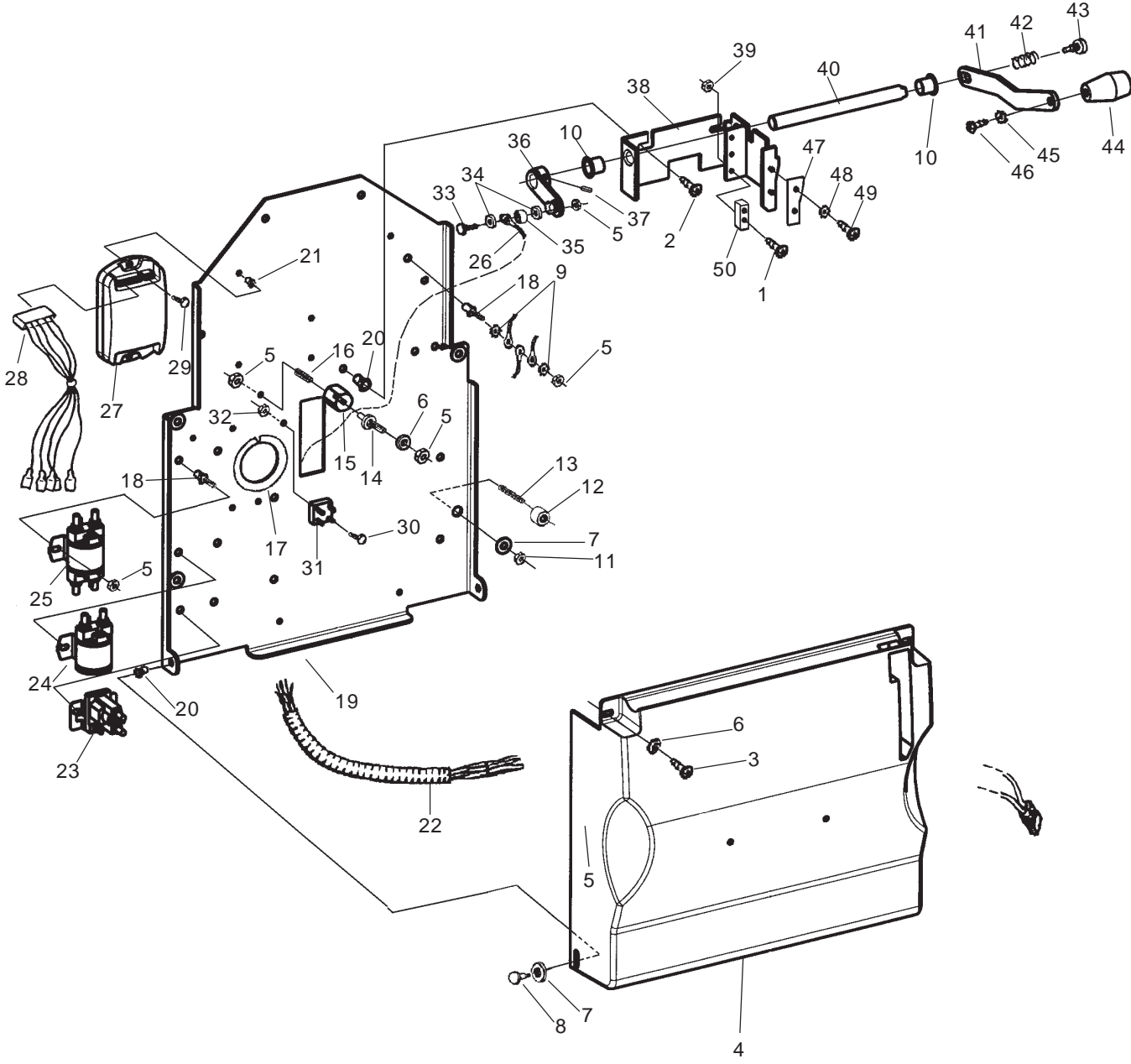
CLARKE TECHNOLOGY
SCRUBTEC 770 / 784 / 795
Recovery Tank Assembly Drawing 2/05



CLARKETECHNOLOGY
SCRUBTEC 770 / 784 / 795
Recovery Tank Assembly Parts List 10/05

Ref #	Part No.	Description	Qty
1	962798	Screw, 10-24 x 1/2 PN	1
2	30057A	Recovery Lid	1
3	920296	Nut, 10-24 ESNA	2
4	30065A	Gasket, Lid	1
5	38020A	Strap	1
6	962666	Screw, 10-24 x 3/4 PN	1
7	58069A	Vac Filter	1
8	39338B	Stand Tube	1
9	837304	O-Ring	2
10	82100A	Locknut	1
11	41809A	Contact	4
12	43402A	Housing, Blue	2
13	920797	Nut	1
14	643418	Gasket, Vac	1
15	58533A	Vac Motor Spacer	3
16	45019A	Vac Motor (order 2 each #11 and #19)	1
17	87026A	Washer, 1/4 Flat	3
18	85728A	Screw, 1/4-20 x 4 Hex	3
19	43401A	Housing, Black	2
20	872010	Clamp	3
21	674110	Vac Exhaust Hose	1
22	962957	Screw, 10-16 x 1/2 PN	2
23	52206A	Chain	1
24	30620A	Squeegee Adapter	1
25	35192A	Squeegee Hose	1
26	30227A	Drain Housing	1
27	30226A	Drain Plug	1
28	52560A	O-Ring	1
29	30225A	Drain Body	1
30	832002	Drain Valve Clamp	1
31	35165A	Recovery Drain Hose	1
32	61591A	Recovery Tank Support	1
33	87622A	Washer, Nylon	1
34	80043A	Shoulder Screw	1
35	30068A	Hinge Pin (included with item #36)	2
36	30673A	Tank, Recovery, 770 S	1
	30697A	Tank, Recovery, 770 L	1
	30698A	Tank, Recovery, 784 S	1
	30699A	Tank, Recovery, 784 L	1
	30700A	Tank, Recovery, 795 S	1
	30701A	Tank, Recovery, 795 L	1
37	40002A	Float Switch (includes items, #38 & 2 ea. #11 & #12)	1
38	56459A	Strain Relief (included in item #37)	1
39	87612A	Seal	1

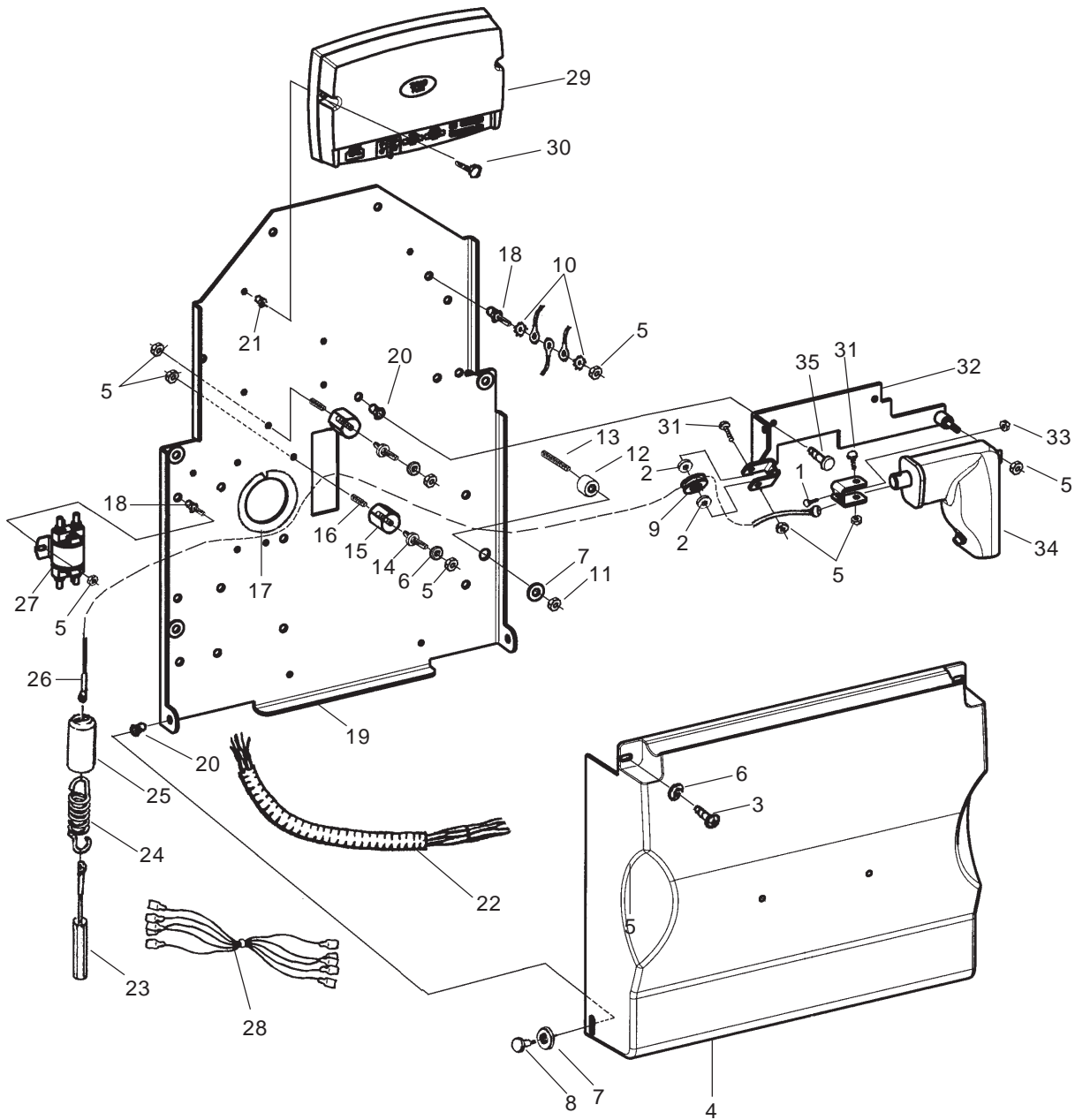
CLARKE TECHNOLOGY
SCRUBTEC 770 S / 784 S / 795 S
Electrical Panel Assembly Drawing 9/05
Drawing # 10849E



CLARKETECHNOLOGY
SCRUBTEC 770 S / 784 S / 795 S
Electrical Panel Assembly Parts List 9/05
Drawing # 10849E

Ref #	Part No.	Description	Qty
1	962980	Screw, 6-32 x 1	2
2	962139	Screw, 1/4-20 x 5/8	2
3	85391A	Screw, 1/4-20 x 5/8 PN	2
4	30594A	Rear Cover	1
5	81104A	Nut, ESNA 1/4-20	10
6	87007A	Washer, 1/4 Flat	3
7	980651	Washer, 5/16 Flat	6
8	80030A	Shoulder Bolt	2
9	980614	Washer, 1/4 External	2
10	902731	Nylon Bearing	2
11	920110	Nut, ESNA 5/16-18	4
12	53569A	Spacer	4
13	80285A	Screw, Set 5/16-18 x 1 3/4	4
14	83302A	Stud, 1/4-20	1
15	854849	Insulator	1
16	170781	Screw, Set 1/4-20 x 3/4	1
17	193951	Trim, 8"	1
18	83307A	Stud, 1/4-20	11
19	61589A	Electrical Panel	1
20	54764A	Insert, 1/4-20	4
21	54763A	Insert, 8-32	2
22	40736A	Main Wiring Harness, Std.	1
23	40125A	Contactor, Vacuum	1
24	41801A	Contactor, Brush	1
25	41802A	Contactor, Main	1
26	61682A	Cable, Upper	1
27	40735A	Controller, Solo	1
28	40759A	Traverse Harness	1
29	80254A	Screw, 8-32 x 1	2
30	962666	Screw, 10-24 x 3/4	1
31	912287	Rectifier	1
32	920296	Nut, ESNA 10-24	1
33	85700A	Screw, 1/4-20 x 1	1
34	87026A	Washer, 1/4 Flat	2
35	608210	Spacer	1
36	65628A	Lever, Cable	1
37	962304	Screw, Set 5/16-18 x 1/2 (must use red Loctite)	2
38	61584A	Squeegee Lift Bracket	1
39	920056	Nut, ESNA #6-32	2
40	61586A	Shaft	1
41	61585A	Squeegee Lift Lever	1
42	438360	Spring	1
43	960510	Shoulder Screw	1
44	52557A	Squeegee Knob	1
45	980666	Washer, 3/8 External	1
46	85389A	Screw, 3/8-16 x 5/8	1
47	68643A	Wear Plate	1
48	980675	Washer	2
49	962546	Screw, 10-24 x 1/2	2
50	47388A	Switch	1

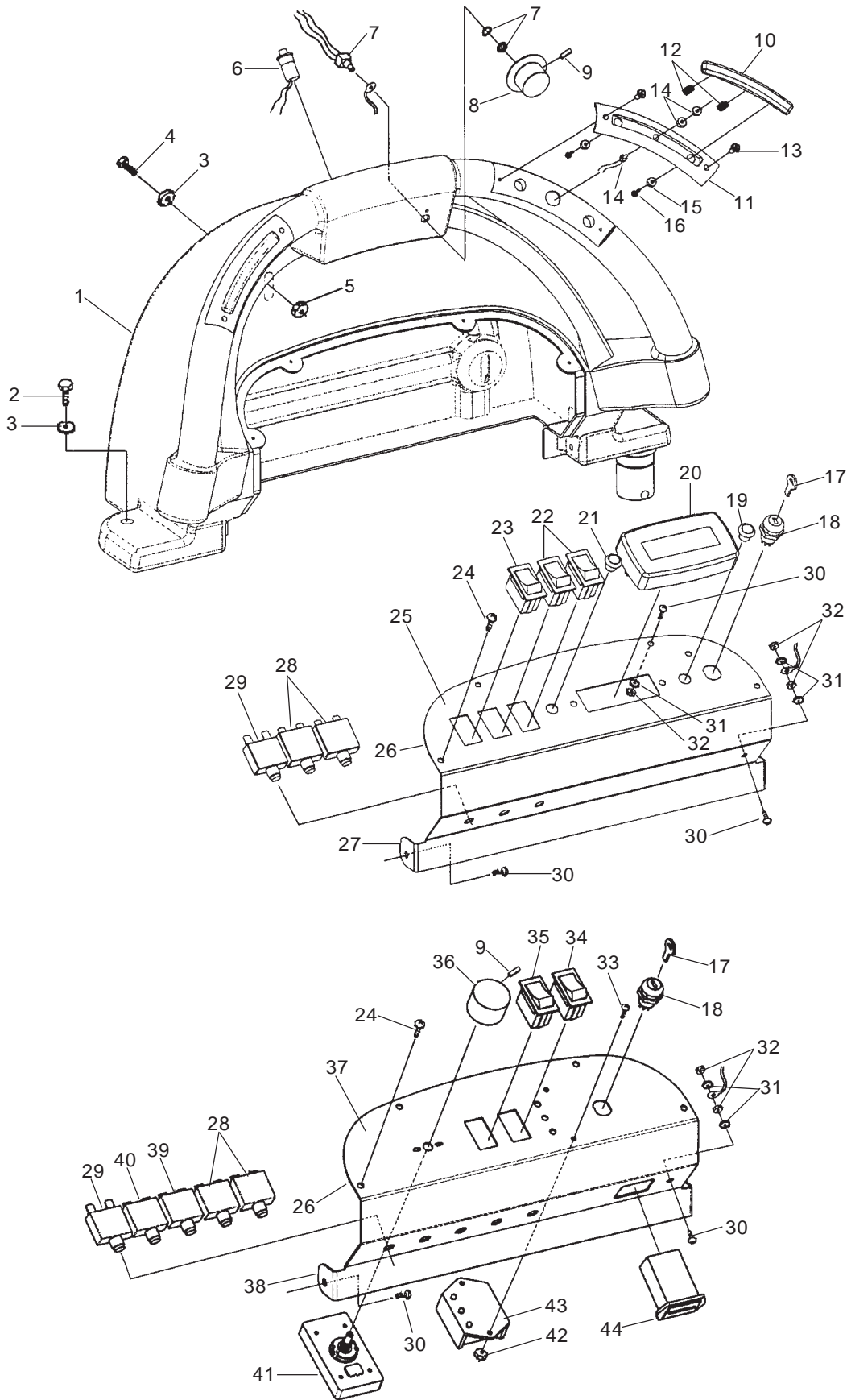
CLARKETECHNOLOGY
SCRUBTEC 770 L / 784 L / 795 L
 Electrical Panel Assembly Drawing 9/05
 Drawing # 10855E



CLARKETECHNOLOGY
SCRUBTEC 770 L / 784 L / 795 L
Electrical Panel Assembly Parts List 10/05
Drawing # 10855E

Ref #	Part No.	Description	Qty
1	962798	Screw	1
2	87624A	Washer, Pulley	2
3	85391A	Screw, 1/4-20 x 5/8 PN	2
4	30626A	Rear Cover	1
5	81104A	Nut, ESNA 1/4-20	10
6	87007A	Washer, 1/4 Flat	4
7	980651	Washer, 5/16 Flat	6
8	80030A	Shoulder Bolt	2
9	57275A	Pulley	1
10	980614	Washer, 1/4 External Lk	2
11	920110	Nut, ESNA 5/16-18	4
12	53569A	Spacer	4
13	80285A	Screw, Set 5/16-18 x 1 3/4	4
14	83302A	Stud, 1/4-20	2
15	854849	Insulator	2
16	170781	Screw, Set 1/4-20 x 3/4	2
17	193951	Trim, 8"	1
18	83307A	Stud, 1/4-20	3
19	61589A	Electrical Panel	1
20	54764A	Insert, 1/4-20	2
21	54763A	Insert, 8-32	2
22	40742A	Main Wiring Harness, Dlx	1
23	61680A	Cable, Spring	1
24	53424A	Spring, Cable	1
25	58409A	Sleeve, Spring	1
26	61681A	Cable, Upper	1
27	41802A	Contacto	1
28	40854A	Harness, Interface	1
29	40743B	Controller, Trio	1
30	80105A	Screw, 8-32 x 1 1/4	2
31	86004A	Screw, 1/4-20 x 1 1/2	2
32	61595A	Bracket, Actuator	1
33	920296	Nut	1
34	40745A	Actuator, Squeegee	1
35	962139	Screw, 1/4-20 x 5/8 Hex	2
36	69872A	Bracket, Pulley	1

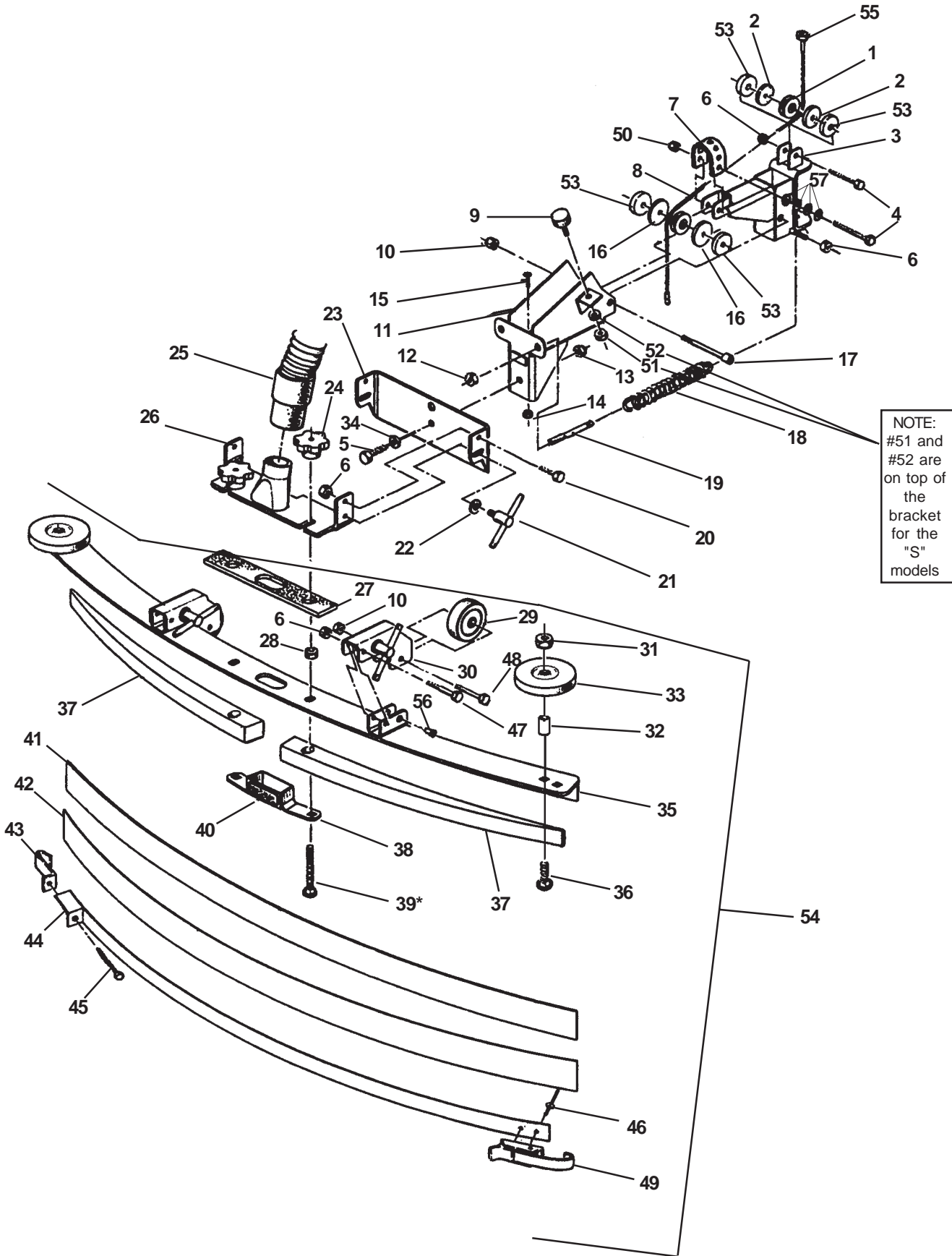
CLARKE TECHNOLOGY
SCRUBTEC 770 / 784 / 795
Control Panel Assembly Drawing 9/05



CLARKE TECHNOLOGY
SCRUBTEC 770 / 784 / 795
Control Panel Assembly Parts List 12/05

Ref. #	Part No.	Description	Qty "L"	Qty "S"
1	30592A	Control Handle	1	1
2	85815A	Screw, 5/16-18 x 1 1/2	2	2
3	980205	Washer, 5/16 Flat	6	6
4	85813A	Screw, 5/16-18 X 1	4	4
5	920110	Nut, LK 5/16-18	4	4
6	52556A	Reverse Switch	1	1
7	40750A	Traverse Potentiometer "L"	1	-
	40738A	Traverse Potentiometer "S"	-	1
8	50962A	Knob, Traverse	1	1
9	962262	Screw, Set 8-32 x 1/2 (included w/# 8 & 36)	2	4
10	30055A	Lever, Switch	2	2
11	30056A	Housing, Switch	2	2
12	50961A	Spring, Switch	4	4
13	80104A	Screw, 10-32 x 1/2 Oval	4	4
14	40126A	Switch, Forward/Reverse	2	2
15	980608	Washer, #6 Flat	4	4
16	962330	Screw, 6-32 x 3/8 Pan	4	4
17	40786K	Key (included w/ # 18)	1	1
18	40786A	Switch, Key	1	-
NI	40786A	Spacer, Key Switch	1	-
19	40748A	Switch, Green Push Button	1	-
20	40880A	LCD Display	1	-
21	40758A	Switch, Black Push Button	1	-
22	40168B	Switch, Momentary Rocker	2	-
23	40747A	Switch, 3 Position Rocker	1	-
24	962957	Screw, 10-16 x 1/2	4	4
25	70962A	Label, Control	1	-
26	34264A	Gasket	1	1
27	61597A	Panel, Control "L"	1	-
28	41431B	Circuit Breaker, 35A	2	2
29	41423B	Circuit Breaker, 5A	1	1
30	85391A	Screw, 1/4-20 x 5/8	4	3
31	980614	Washer, 1/4 External	3	2
32	920208	Nut, 1/4-20	3	2
33	962968	Screw, 10-24 x 1/2	-	2
34	40749A	Switch, Momentary Rocker	-	1
35	47381B	Switch, Mantain Rocker	-	1
36	55502A	Knob, Control	-	1
37	70961A	Label, Control	-	1
38	61588A	Panel, Control	-	1
39	41448B	Circuit, Breaker, 30A	-	1
40	41422B	Circuit, Breaker, 25A	-	1
41	44308B	Solution Modulator	-	1
42	920296	Nut, Lk 10-24	-	2
43	40898A	Meter, Battery/Charger	-	1
44	912226	Meter, Hour	-	1

CLARKE TECHNOLOGY
SCRUBTEC 770 / 784 / 795
 Squeegee Swing Arm Assembly Drawing 4/06



CLARKE TECHNOLOGY
SCRUBTEC 770 / 784 / 795
Squeegee Swing Arm Assembly Parts List 4/06

Ref #	Part No.	Description	Qty	Model
1	57275A	Pulley	2	All
2	87623A	Washer, Nylon 1¼x¼x1/8	2	All
3	60452A	Swing Arm, Front	1	All
4	86004A	Screw, .25-20 x 1½	2	All
5	85730A	Screw, .375-16 x 1¼	1	All
6	81104A	Nut, Hex ESNA SS	6	All
7	38021A	Strap	1	All
8	61679A	Cable, Lower	1	All
9	51613A	Bumper	1	All
10	920110	Nut, ESNA	3	All
11	60332A	Swing Arm, Rear	1	All
12	920256	Nut, Hex	2	All
13	81105A	Nut, ESNA SS	1	All
14	920296	Nut, 10-24 ESNA SS	1	All
15	962798	Screw, 10-24 x .50	1	All
16	87624A	Washer, Nylon 1½x¼x1/8	2	All
17	80015A	Screw, Shoulder	1	All
18	53423A	Spring, Squ. Pressure	2	All
19	68016A	Stud	2	All
20	170915	Screw, SS Hex	2	All
21	64905A	THandle	3	All
22	980651	Washer, Flat .312	1	All
23	60678C	Pivot Bracket	1	All
24	25201A	Knob	2	All
25	35192A	Hose, Squeegee Rec.	1	All
26	61267A	Tube Bracket	1	All
27	34260B	Squeegee Gasket	1	All
28◆	81301A	Nut, Jam SS	2	All
29	59971A	Wheel	2	All
30	65975A	Wheel Mount Bracket	2	All
31◆	81217A	Nut, 1/4-20 ESNA	2	All
32◆	60248A	Sleeve	2	All
33◆	30048A	Guide Wheel	2	All
34	87031A	Washer, 3/8 Flat	1	All

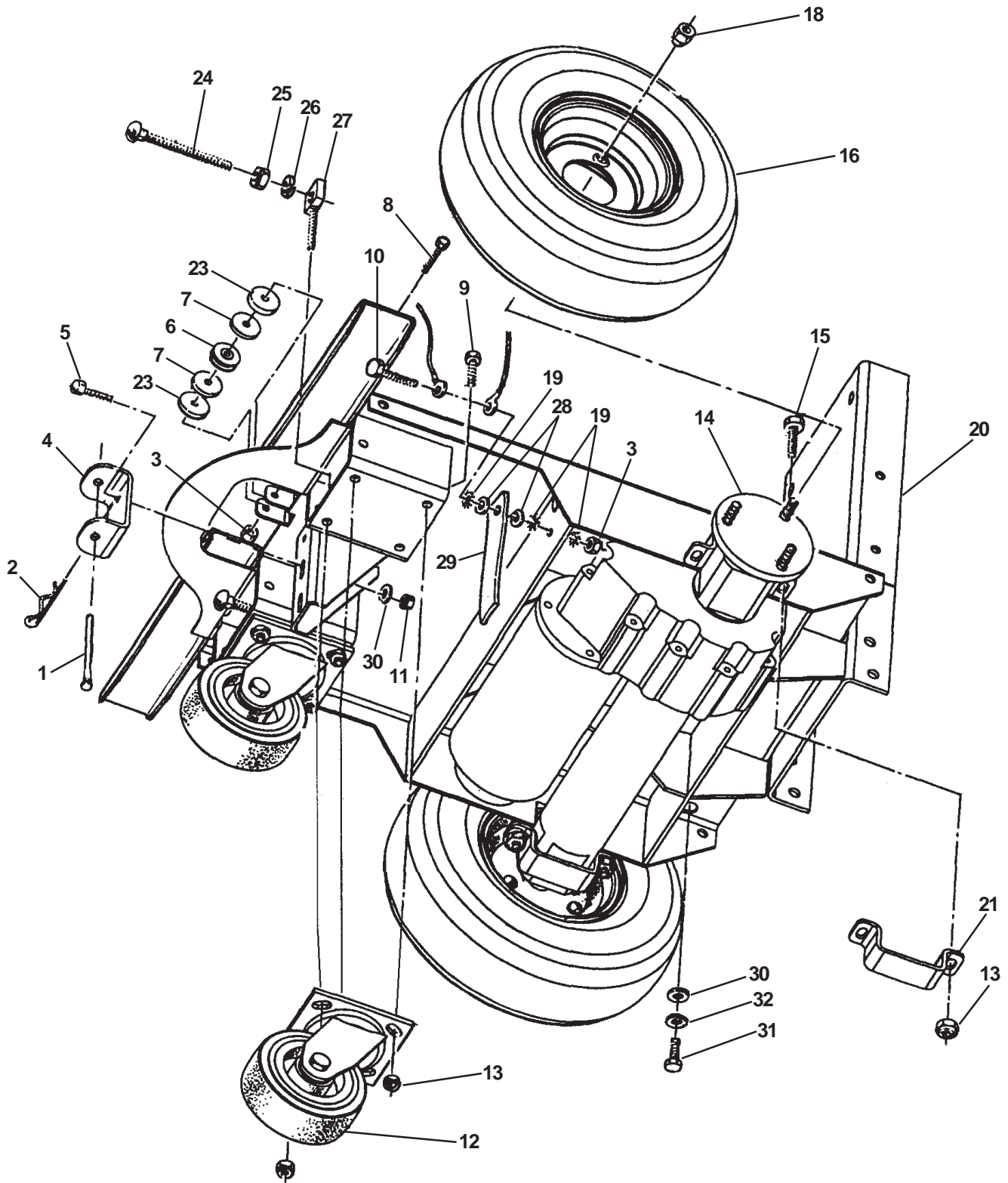
NOTE: When changing squeegee blades, it might be necessary to loosen screw #39; install and secure blades with clamp #44; then retighten screw #39. This will allow for different thickness.

Ref #	Part No.	Description	Qty	Model
35	69673A	Squeegee Base	1	28
	69674A	Squeegee Base	1	33
	69675A	Squeegee Base	1	38
	69636A	Squeegee Base, 29" acc.	1	28
36◆	80316A	Screw, ¼-20 x 1 Flat SS	2	All
37	38710A	Spacer	2	28
	38711A	Spacer	2	33
	38715A	Spacer	2	38
	38713A	Spacer, 29" accessory	2	28
38	62712A	Air Duct	1	All
39	80011A	Screw, .375-16 x 3.00	2	All
40	37016A	Grip Pad	1	All
41*	30716A	Blade, Inner	1	28
	30717A	Blade, Inner	1	33
	30718A	Blade, Inner	1	38
	30930A	Blade, Inner Ribbed 29"	1	28
42*	30912A	Blade, Outer	1	28
	30913A	Blade, Outer	1	33
	30935A	Blade, Outer	1	38
	30931A	Bade, Outer 29" acc.	1	28
43	62421A	End Clamp	1	All
44	62442A	Clamp, Weld	1	28
	62443A	Clamp, Weld	1	33
	62444A	Clamp, Weld	1	38
	62441A	Clamp, Weld 29" acc.	1	28
45	86004A	Screw, .25-20 x 1.50 Hex	1	All
46	170932	Rivet	2	All
47	85702A	Screw, .25-20 x 1.75	2	All
48	85816A	Screw, .312-18 x 1.75	2	All
49	55722A	Squeegee Strap Latch	1	All
50	81217A	Nut, ½-20	1	All
51	920208	Nut, Hex ¼-20	1	All
52	980657	Washer, ¼ Lock	1	All
53	87625A	Washer, Nylon 1¼x¼x1/32	4	All
54	18815K	Asm., Squeegee	1	28
	18816K	Asm., Squeegee	1	33
	18817K	Asm., Squeegee	1	38
	18818A	Asm., Squeegee*	1	28
55	81303A	Nut, ¼-28	1	All
56	54766A	Insert, Threaded 5/16-24	2	All
57	87026A	Washer	4	All

NOTE: ◆ indicates a change has been made since the last publication of this manual.

* See accessory page

CLARKE TECHNOLOGY
SCRUBTEC 770 / 784 / 795
Traverse System Assembly Drawing 2/05

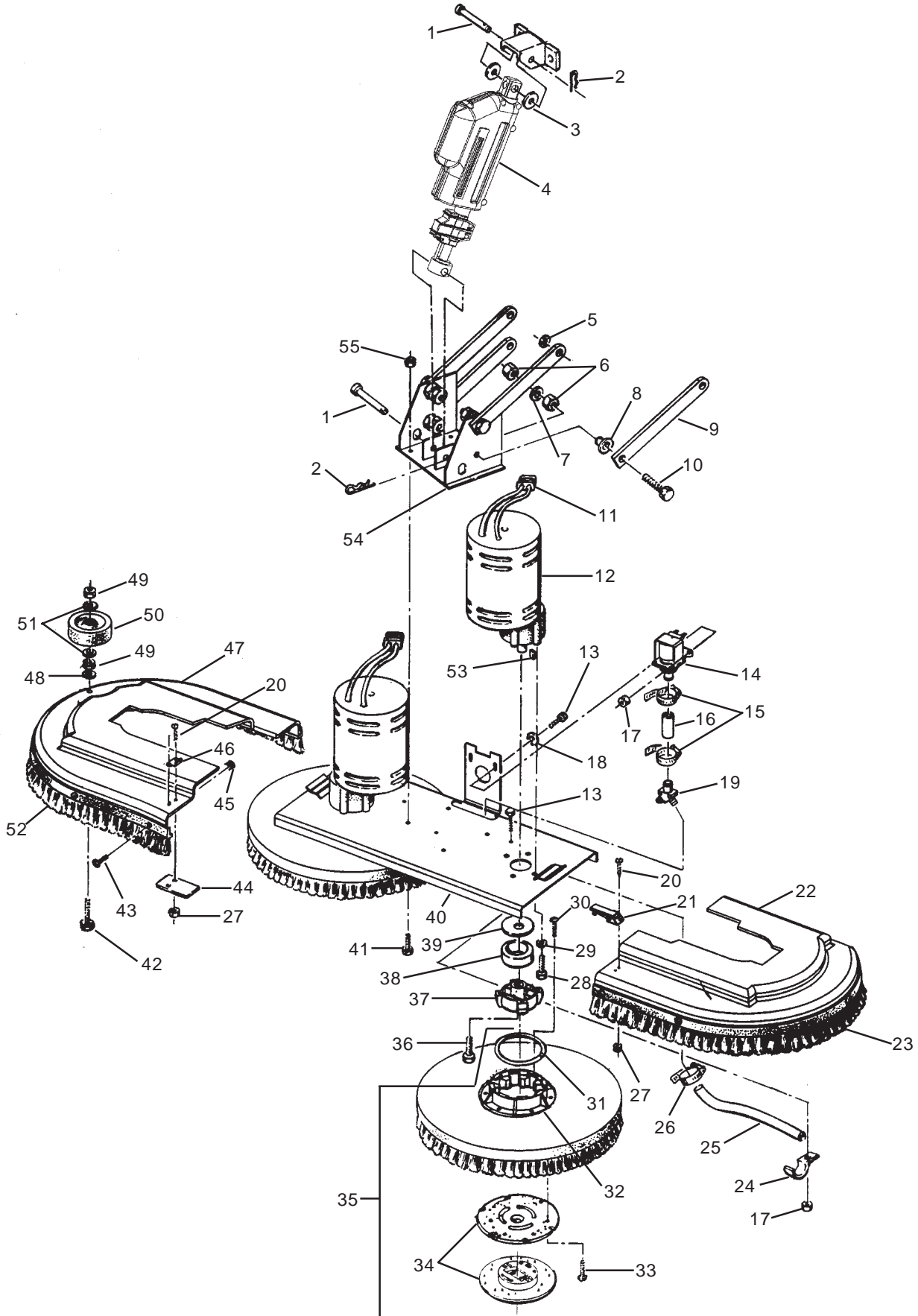


CLARKE TECHNOLOGY
SCRUBTEC 770 / 784 / 795
 Traverse System Assembly Parts List 2/05

Ref #	Part No.	Description	Qty	Model
1	66531A	Swing Arm Pin	1	All
2	836711	Hair Pin	1	All
3	81104A	Nut, .25-20 ESNA	2	All
4	69877A	Swing Bracket	1	All
5	85811A	Screw, .312-18 x .75	2	All
6	57275A	Cable Pulley	1	All
7	87623A	Washer, Nylon 1¼x¼IDx.120	2	All
8	86004A	Screw, .25-20 x 1.50	1	All
9	962288	Screw, .375-16 x 1	6	All
10	85700A	Screw, .25-20 x 1	1	All
11	920110	Nut, .312-16 ESNA	2	All
12	899769	Caster Assembly	2	All
13	81105A	Nut, .375-16 ESNA	12	All
14	59116E	Transaxle, Imperial (see page 51 for parts)	1	All
15	85730A	Screw, Hex	4	All
16	59969A	Wheel Assembly*	2	All
	59955A	Wheel, Foam Filled (opt.)	2	All
18	81221A	Lug Nut, 50-20 UNF	6	All
19	980614	Washer, Star Lock .25	3	All
20	61594A	Main Frame	1	All
21	65963A	Transaxle Mount	2	All
23	87625A	Washer, Nylon 1¼x¼IDx3/32	2	All
24	80011A	Screw, ¾-16 x 3	2	All
25	81207A	Nut, ¾-16	2	All
26	170883	Washer, Lock ¾	2	All
27	58419A	Stud, ¾M x ¾F	2	All
28	980205	Washer, .25 Fender	2	All
29	69639A	Strap, Static	1	All
30	980645	Washer, Flat ¾	6	All
31	962244	Screw, ¾-16 x ¾	4	All
32	980638	Lockwasher ¾	4	All
NI	32417B	Wheel Cover	2	All

*30039A tube, inner (included in item #16) 1 Ref.

CLARKE TECHNOLOGY
SCRUBTEC 770 / 784 / 795
Brush Head Assembly Drawing 2/05



CLARKE TECHNOLOGY
SCRUBTEC 770 / 784 / 795
Brush Head Assembly Parts List 10/05

Ref #	Part No.	Description	Qty	Model
1	82501A	Pin	2	All
2	766780	Hair Pin	2	All
3	38723A	Nylon Spacer	2	All
4	52497A	Actuator & Tube Asm.	1	S series
	52499A	Actuator & Tube Asm.	1	L series
5*	980673	Washer	4	All
6	920278	Nut, Jam 50-20	16	All
7	980626	Washer, Lock .50	8	All
8	67705B	Sleeve Bearing	8	All
9	63032A	Linkage Bar	4	All
10	85838A	Screw, .50-201.50	8	All
11	41601A	Connector	4	All
	40645A	Housing	4	All
12***	45036B	Brush Motor 1.00 HP	2	All
13	170915	Screw, Hex	4	All
14	48703A	Electric Valve	1	All
15	50248A	Hose Clamp	2	All
16	30455A	Hose	1	All
17	81104A	Nut, .25-20 ESNA	5	All
18	87007A	Washer, Flat .25	2	All
19	38014A	Solution Splitter	1	All
20	962992	Screw, 8-32x.62 SS	4	All
21	55721A	Latch	1	All
22	30574A	Left Brush Housing	1	28
	30583A	Left Brush Housing	1	33
	30355A	Left Brush Housing	1	38
23	38246A	Left Skirt	1	38
24	782002	Clamp	2	All
25	30453A	Brush Hose	2	All
26	722021	Hose Clamp	2	All
27	81109A	Nut, 8-32 ESNA SS	4	All
28	962244	Screw, .375-16x.75	8	All
29	980638	Washer, Lock .375	8	All
30	962495	Screw, .25-20x1.00Pn Hd	6	All
31	838301	Brush Holder Spring	2	All
32	833802	Gimbal, Female	2	All
33	962737	Screw, 10-16x.88 (Pad Driver Only)	6	All

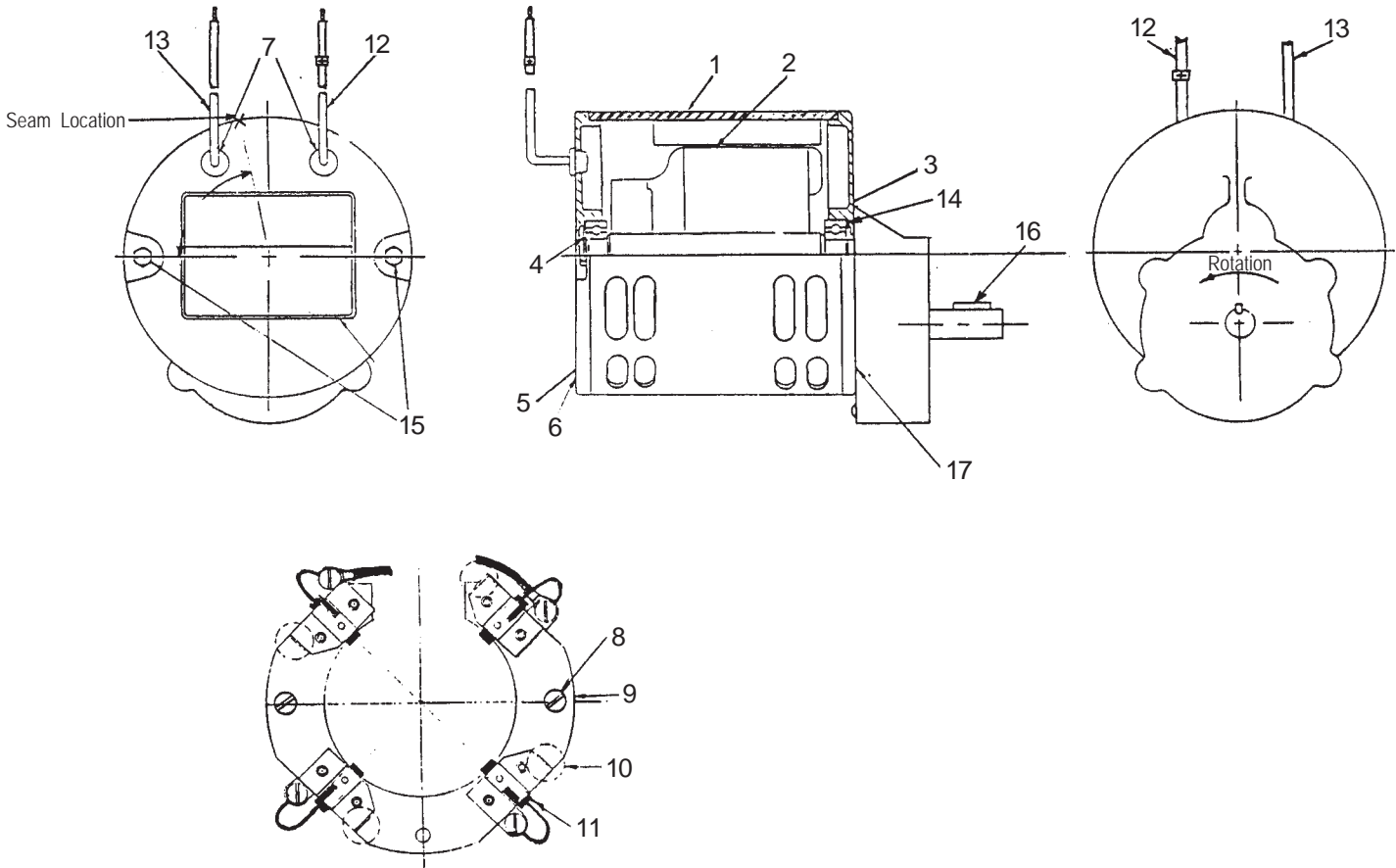
Ref #	Part No.	Description	Qty	Model
34	56941A	Center-Lock Asm. (Pad Driver Only)	2	All
35	11427B	Poly Brush Assembly-14	2	28
	11424B	Poly Brush Assembly-17	2	33
	11434B	Poly Brush Assembly-19	2	38
	11426B	Grit Brush Assembly-14	2	28
	11425B	Grit Brush Assembly-17	2	33
	11433B	Grit Brush Assembly-19	2	38
	17521C	Pad Driver Assembly-14	2	28
	17520C	Pad Driver Assembly-17	2	33
	17524B	Pad Driver Assembly-19	2	38
36	962714	Screw, .312-18x.75 Soc.	2	All
37	34400B	Gimbal, Male	2	All
38	61658A	Gimbal Collar	2	All
39	59856A	Rubber Washer	2	All
40	66232A	Brush Plate-28	1	28
	61587A	Brush Plate-33	1	33
	66234A	Brush Plate-38	1	38
41	85811A	Screw, .312-18x.75 Hex	4	All
42	85610A	Screw, .375-16x2.5 SS Pn	1	All
43	85616A	Screw, 10-22x.62 Pn SS	11	38
44	69186A	Latch Tab	1	All
45	82004A	"T" Nut 10-32	12	38
46	55451A	Keeper	1	All
47	30575A	Right Brush Housing	1	28
	30584A	Right Brush Housing	1	33
	30247A	Right Brush Housing	1	38
48	980638	Lockwasher	1	All
49	920248	Nut, .375-16 Jam Thin ESNA	2	All
50	59950A	Guide Wheel	1	All
51	980645	Washer, Flat .375	2	All
52	38247A	Right Skirt	1	38
53	915102	Key	2	All
54	65966A	Brush Head Mount	1	All
55	920110	Nut, .312-18 ESNA	6	All
**NI	77091A	Label, Moving Parts	2	All

*Used only as required to square up linkage bars #9 to the frame.

**Attach to Brush Motor.

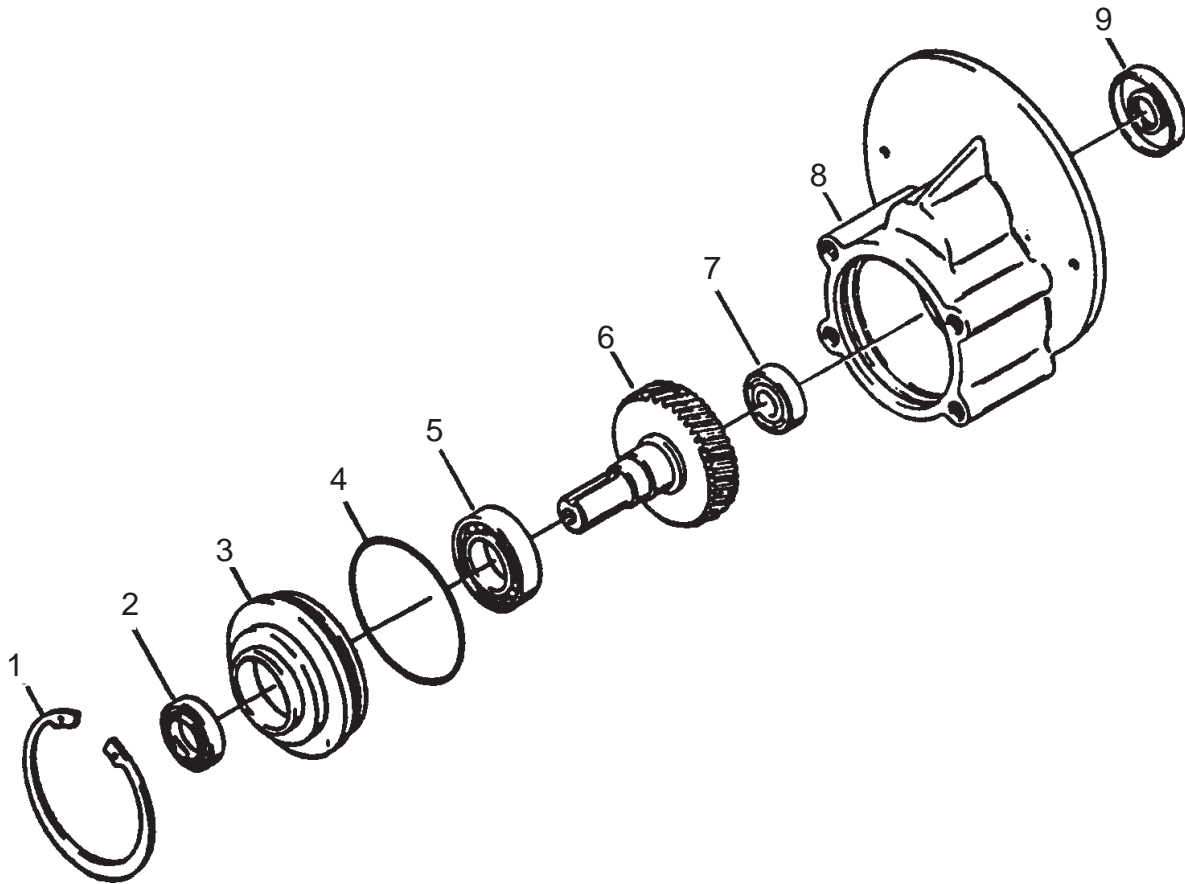
***Includes Item #11

CLARKE TECHNOLOGY
SCRUBTEC 770 / 784 / 795
 Brush Motor #45036A 2/05



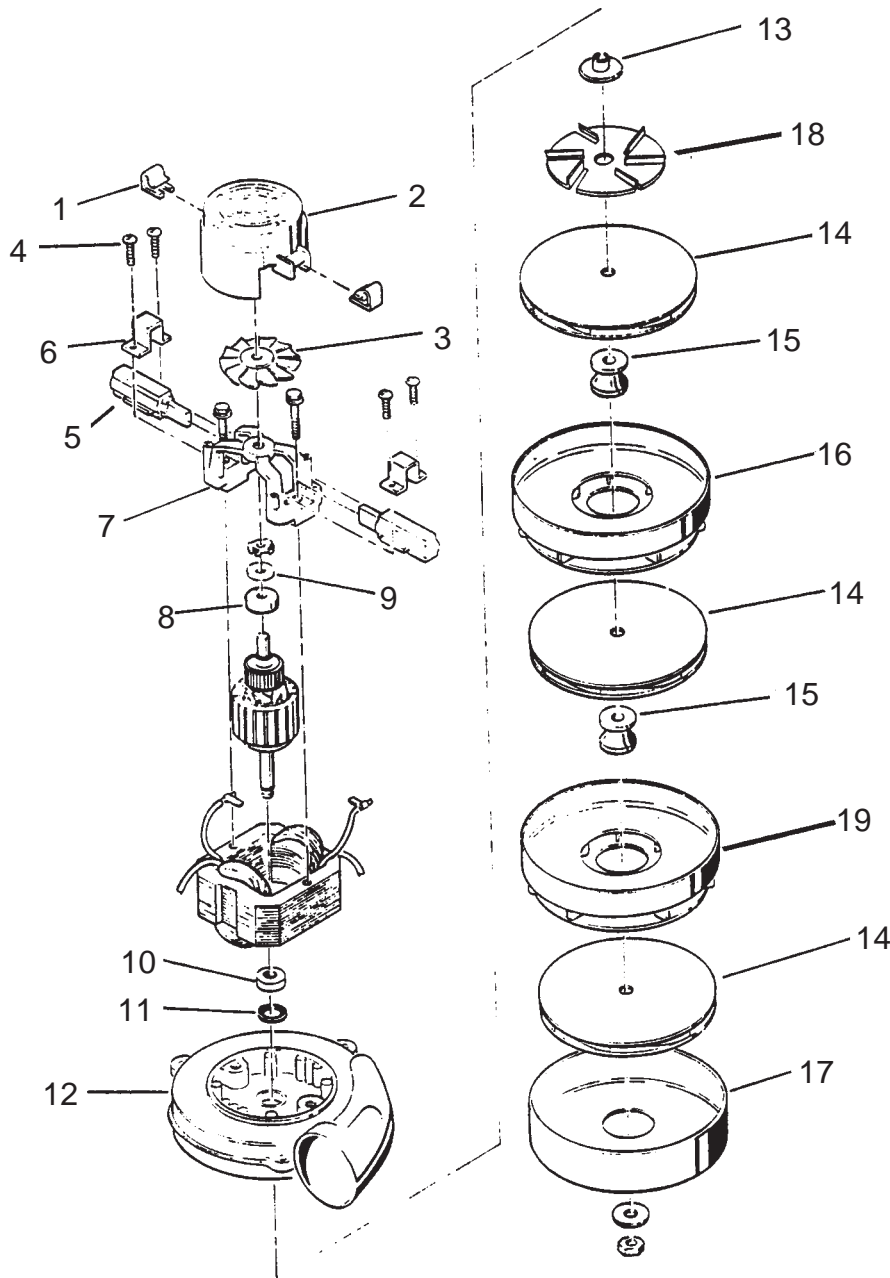
Ref #	Part No.	Description	Qty
1	46734A	Stator Assembly (w/Magnets & Clips)	1
2	40318A	Armature Asm.(w/B.E. & F.E. bearings)	1
3	902654	Bearings B.E.	1
4	902550	Bearing F.E.	1
5	51840A	Commutator Bracket Assembly (w/Brush BRD Assembly Leads)	1
6	50520A	Commutator Bracket	1
7	56480A	Strain Relief	2
8	962546	Brush Board Screw	2
9	50517A	Brush Board Asm. (w/springs & brushes)	1
10	448396	Brush Spring	4
11	40826A	Brush Assembly	4
12	55657A	Lead Assembly, Positive	1
13	55656A	Lead Assembly, Negative	1
14	59805A	Helical Washer	1
15	50515A	Thru Bolt	2
16	80501A	Shaft Key	1
17	54238A	B.E. Bracket Assembly (Gear Box)	1

CLARKE TECHNOLOGY
SCRUBTEC 770 / 784 / 795
 Gear Box #54238A 2/05



Ref #	Part No.	Description	Qty
1	57846A	Ring, Snap	1
2	507641	Seal, Oil, Small	1
3	52050A	Cap End	1
4	56668A	O'Ring	1
5	51176A	Bearing, Large	1
6	58316A	Shaft & Gear, Gearbox	1
7	902605	Bearing, Small	1
8	54883A	Housing	1
9	58144A	Seal, Oil Large	1
NI		Darina Grease	4oz.

CLARKE TECHNOLOGY
SCRUBTEC 770 / 784 / 795
 Vac Motor Assembly #45019A 2/05



Ref #	Part No.	Description	Qty
1	51913A	Clip (optional)	2
2	54809A	Housing	1
3	53905A	Fan	1
4	85303A	Screw - 8-32 x 3/8	4
5	40830A	Carbon Brushes	2
6	51914A	Clamp	2
7	50618A	Bracket	1
8	53100A	Disc	1
9	902679	Bearing - Ball	1
10	902648	Bearing - ball, radial	1

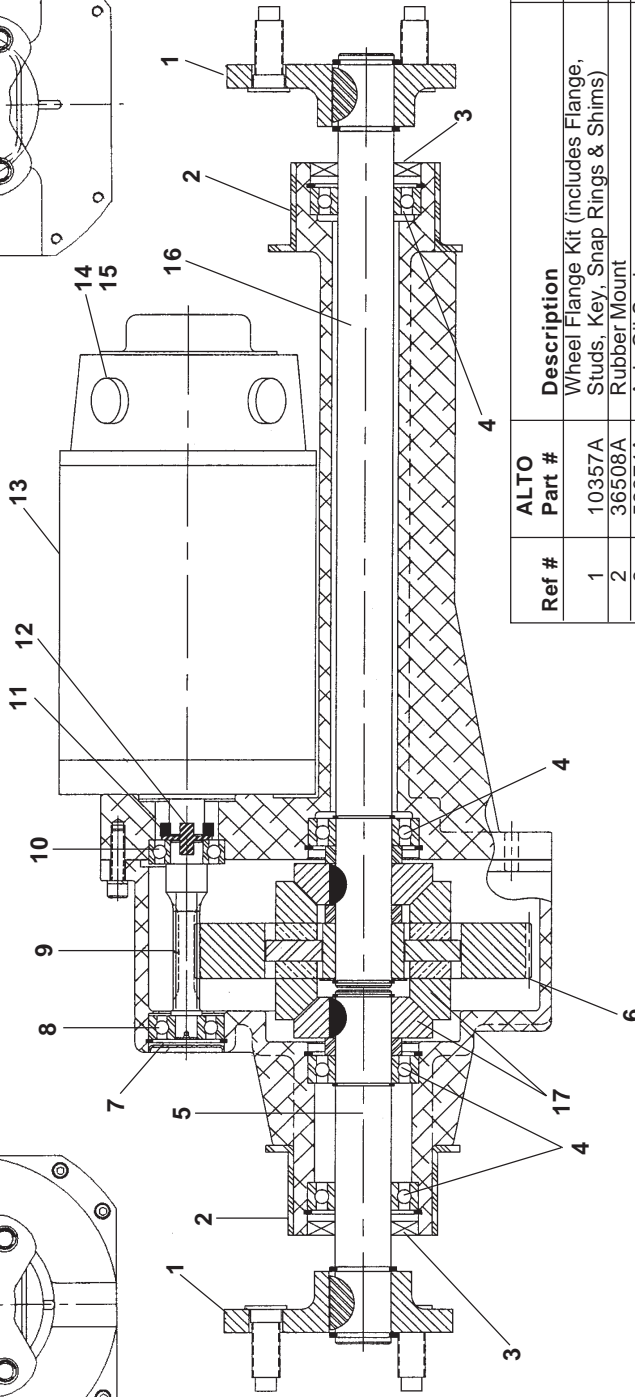
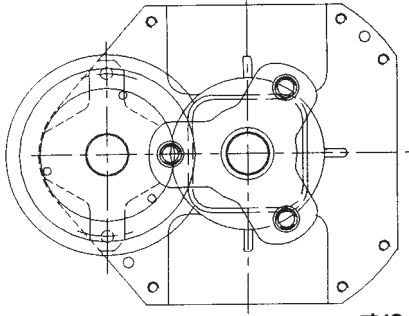
Ref #	Part No.	Description	Qty
11	59803A	Washer - neoprene	1
12	50610A	Bracket and shell	1
13	58501A	Spacer	1
14	53914A	Fan - Rotating	3
15	658201	Spacer	2
16	53908A	Fan - Stationary	1
17	658506	Shell	1
18	53995A	Fan, Air Seal	1
19	53996A	Fan, Stationary	1

CLARKE TECHNOLOGY
SCRUBTEC 770 / 784 / 795
 Imperial Transaxle Parts 2/05
 PN59116A

PERMANENT MAGNET MOTOR
MFG. IN USA

Model	4BC-2800	HP	.50
RPM	1200	Ins. Cl.	F
Volt	36 VDC	Mount	Flange
AMP.	15	Shaft	Tang
Duty	Cont	Ser. No.	
Date	16:1 Ratio		

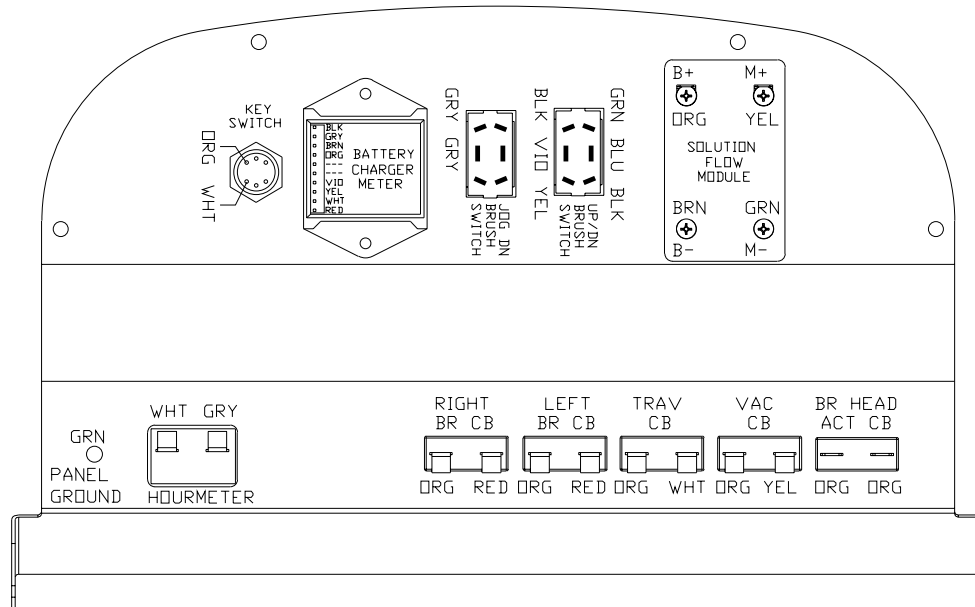
① To replace coupler remove these two screws (Black) to separate the motor from gearbox to allow access to coupler



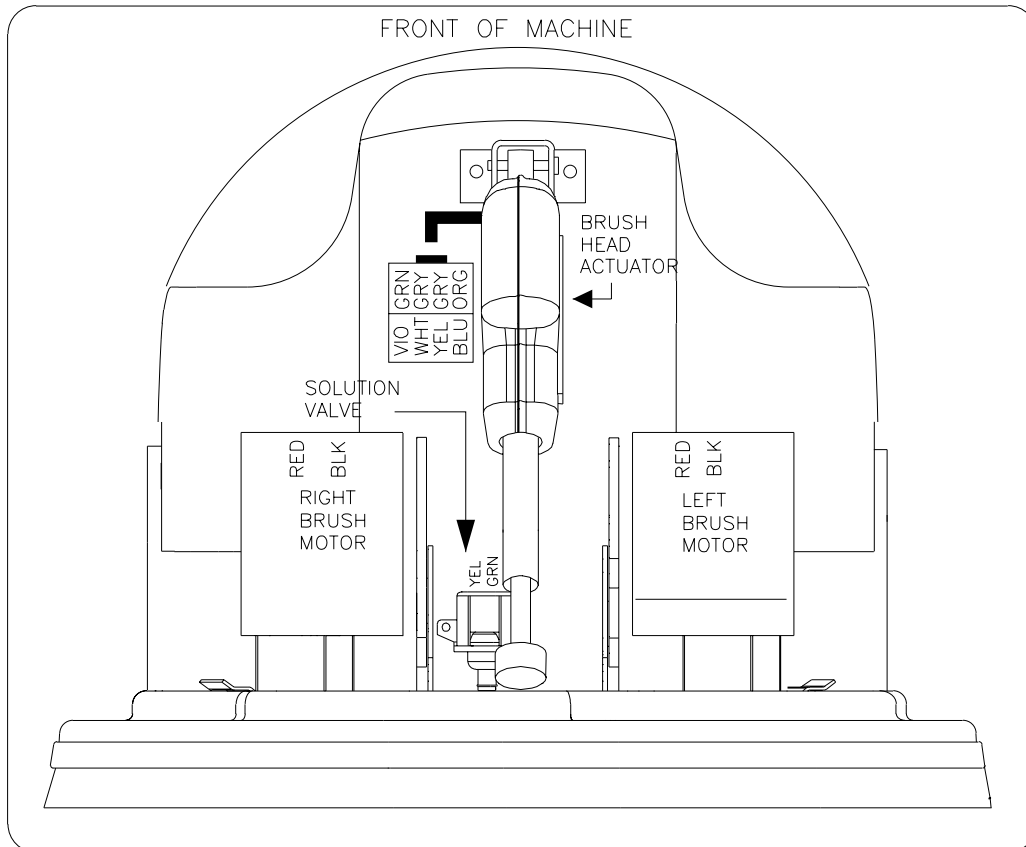
Ref #	ALTO Part #	Description	Qty
1	10357A	Wheel Flange Kit (includes Flange, Studs, Key, Snap Rings & Shims)	2
2	36508A	Rubber Mount	2
3	53374A	Axle Oil Seal	2
4	53375A	Axle Bearing	4
5	53376A	Short Axle	1
6	53377A	Output Gear	1
7	53378A	Input Plug	1
8	53379A	Outer Pinion Bearing	1
9	53380A	Pinion	1
10	53381A	Inner Pinion Bearing	1
11	52663A	Steel Ring, Coupler	1
① 12	69195A	Rubber Coupler	1
13	45048A	Motor	1
14	51720A	Brushes w/Springs (Set of 4)	1
15	30074A	Motor Brush Cap (Internal Threads)	4
	53382A	Motor Brush Cap (External Threads)	4
16	53383A	Long Axle	1
	54282A	Gearbox Asm w/o motor	1
17	53435A	Miter Gear	4

Parking Brake Spare Parts		
Part No.	Description	Qty
53384A	Pad, Friction	1
53385A	Hub, Shaft	1
80121A	Key, 4 MM - Hub	1
80122A	Set Screw, M3 - Hub	1

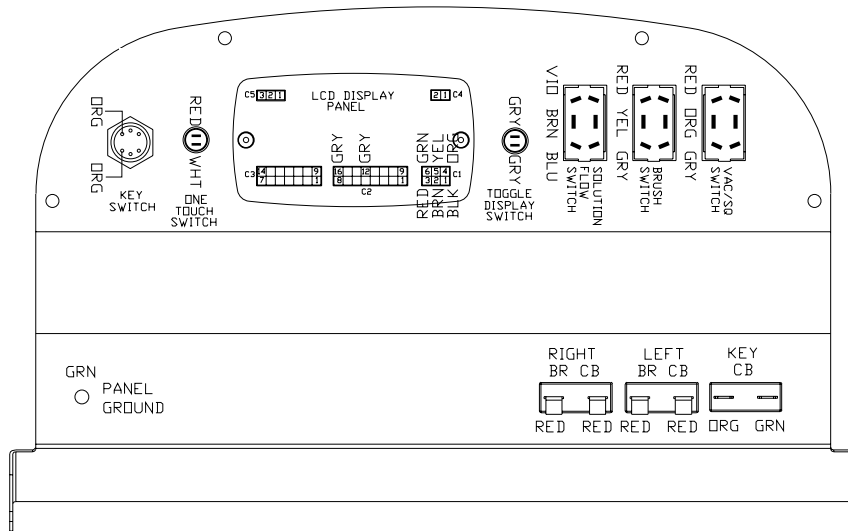
CLARKE TECHNOLOGY
SCRUBTEC 770 S / 784 S / 795 S
Control Panel Connection Diagram 2/05



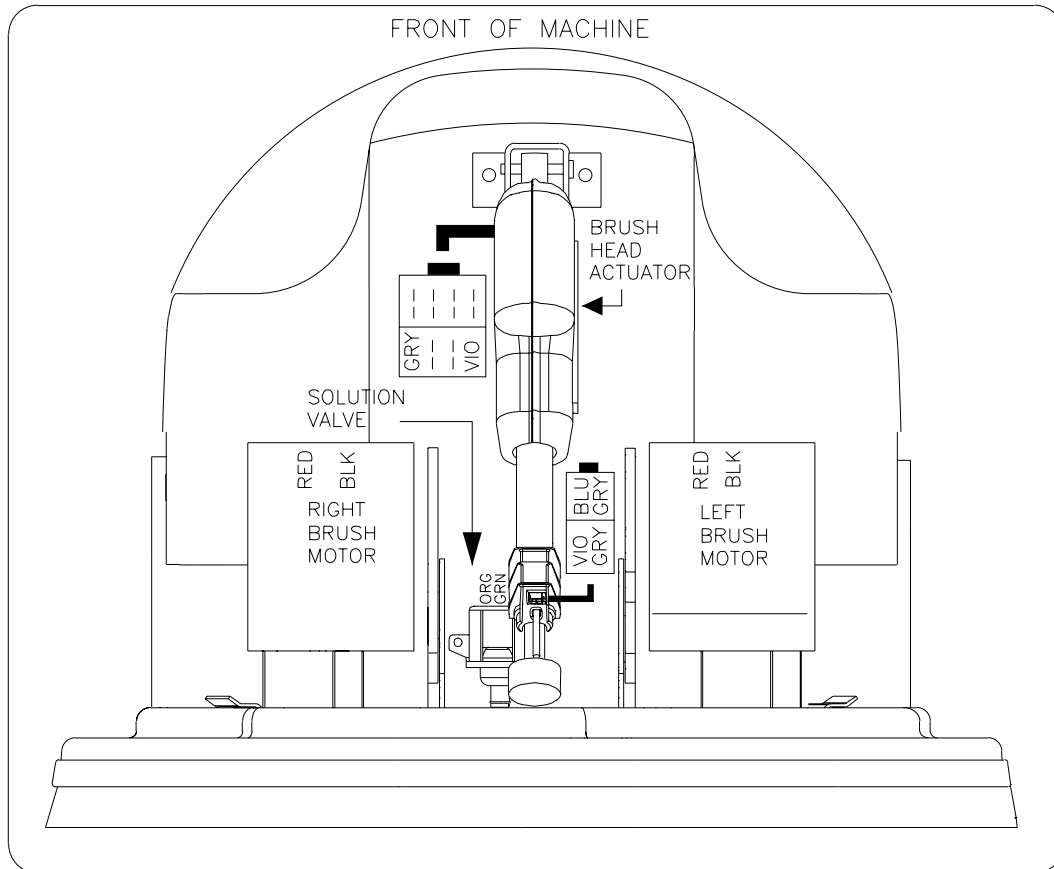
CLARKE TECHNOLOGY
SCRUBTEC 770 S / 784 S / 795 S
(Front of Machine) Connection Diagram 2/05



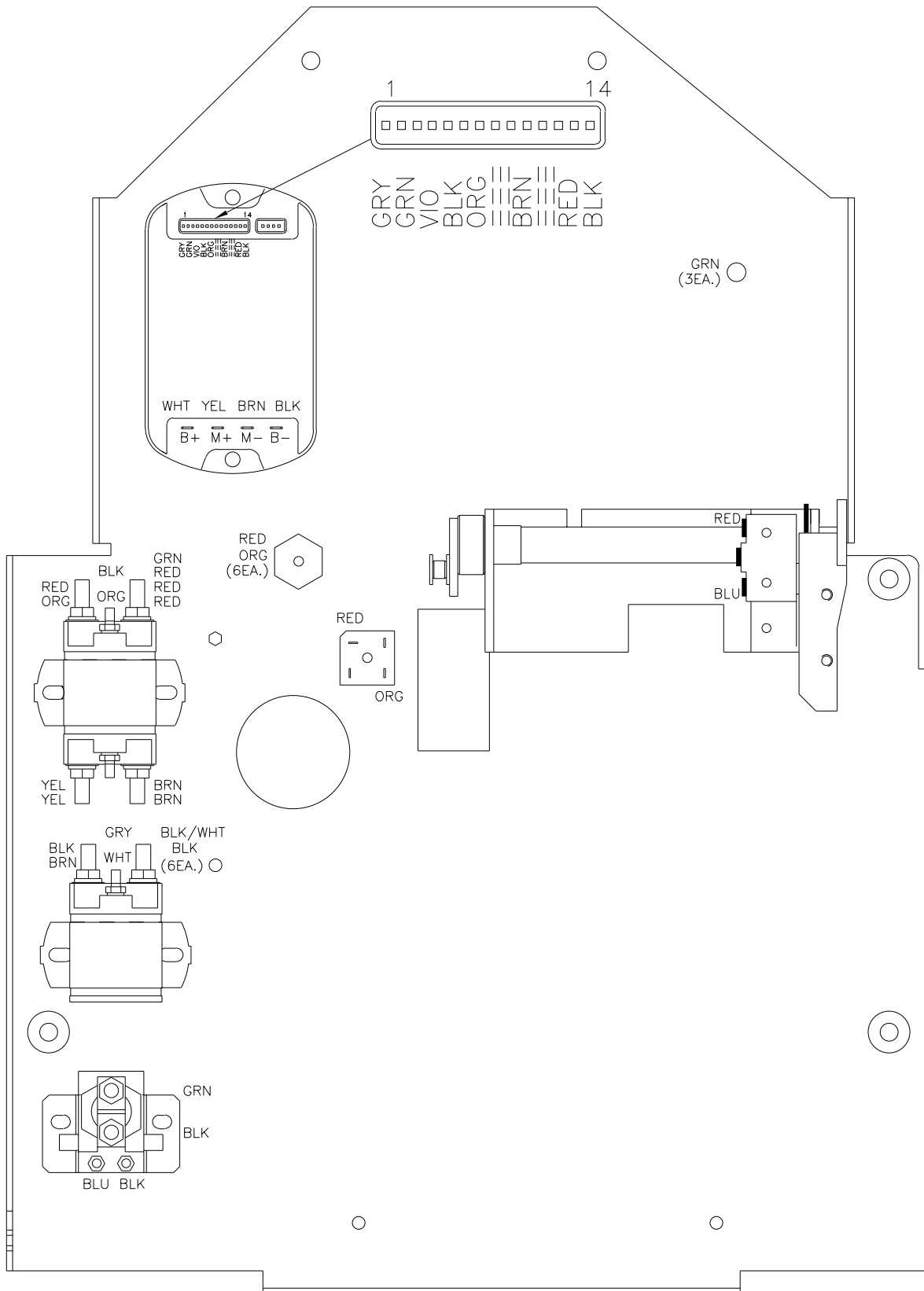
CLARKE TECHNOLOGY
SCRUBTEC 770 L / 784 L / 795 L
Control Panel Connection Diagram



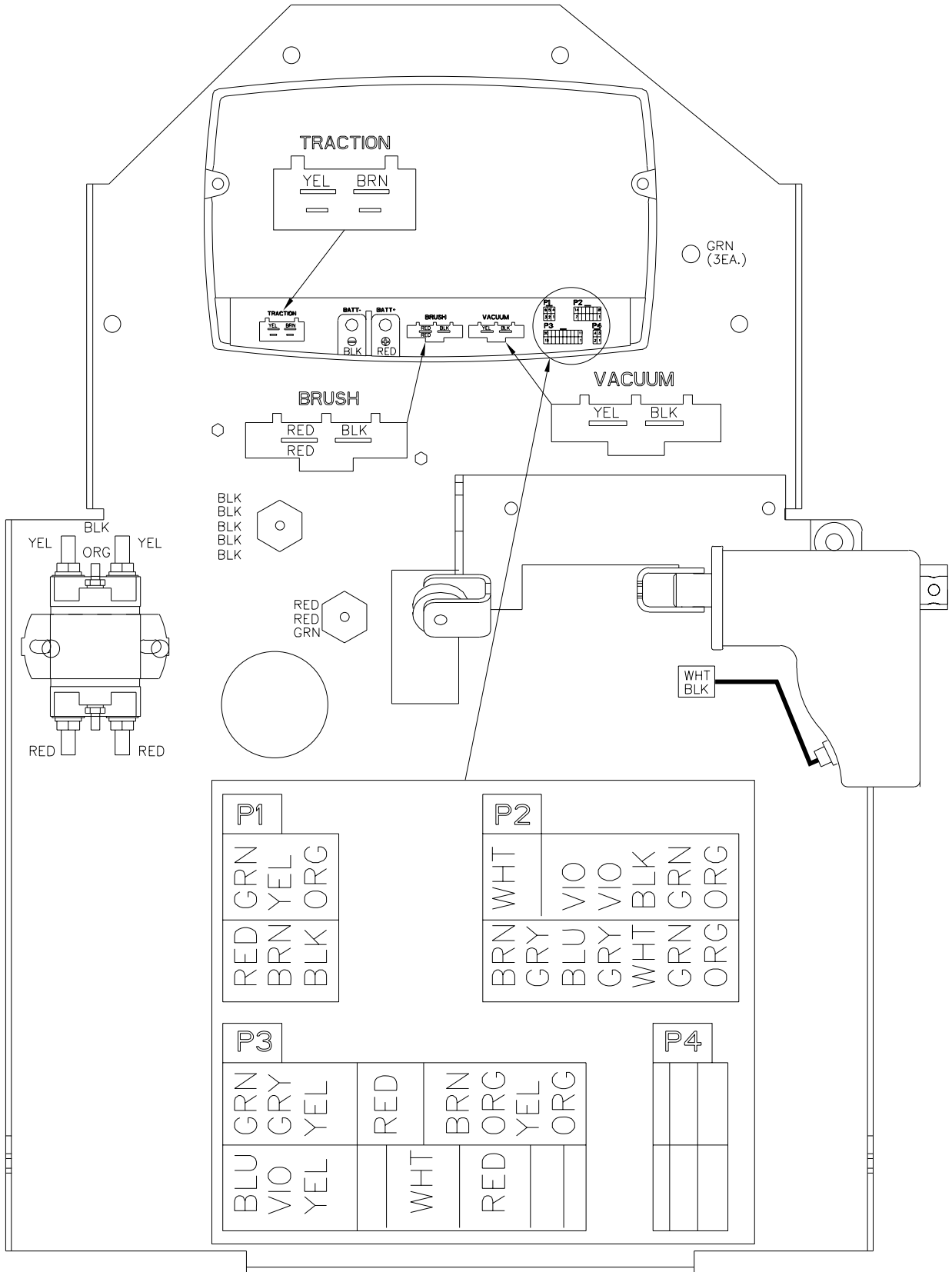
CLARKE TECHNOLOGY
SCRUBTEC 770 L / 784 L / 795 L
(Front of Machine) Connection Diagram 2/05



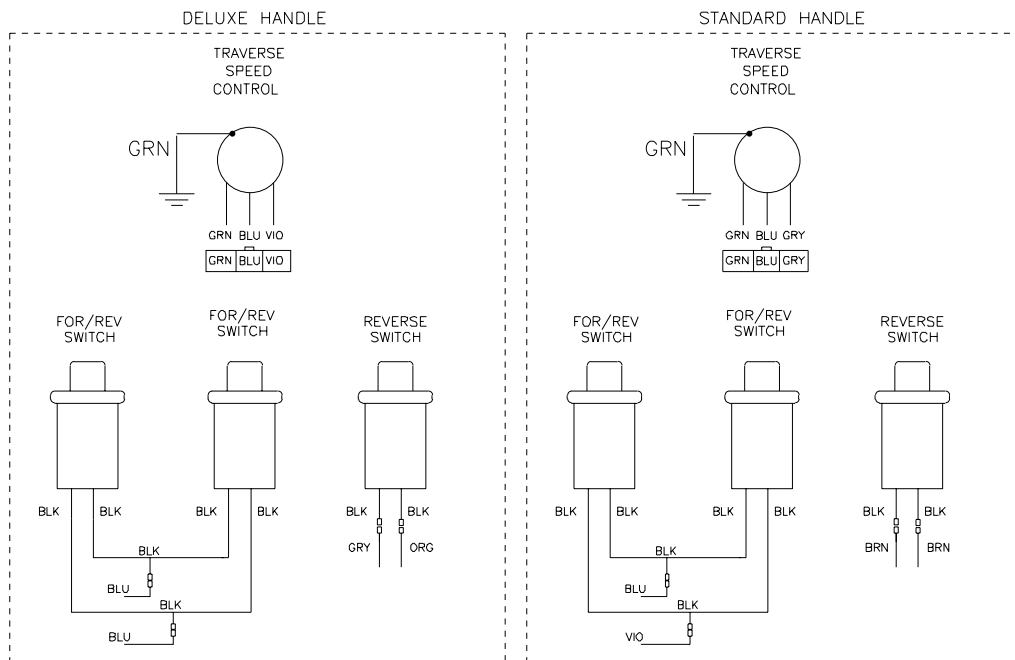
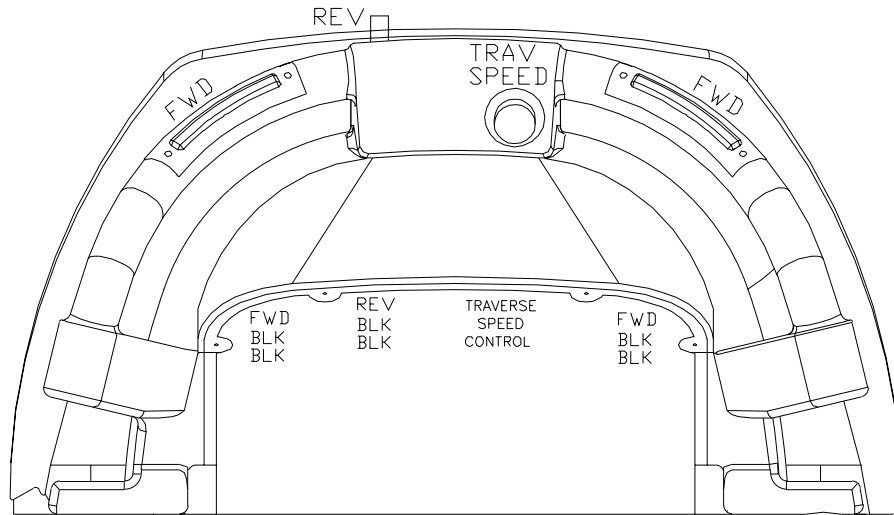
CLARKE TECHNOLOGY
SCRUBTEC 770 S / 784 S / 795 S
Electrical Plate Connection Diagram 9/05



CLARKE TECHNOLOGY
SCRUBTEC 770 L / 784 L / 795 L
 Electrical Plate Connection Diagram 9/05



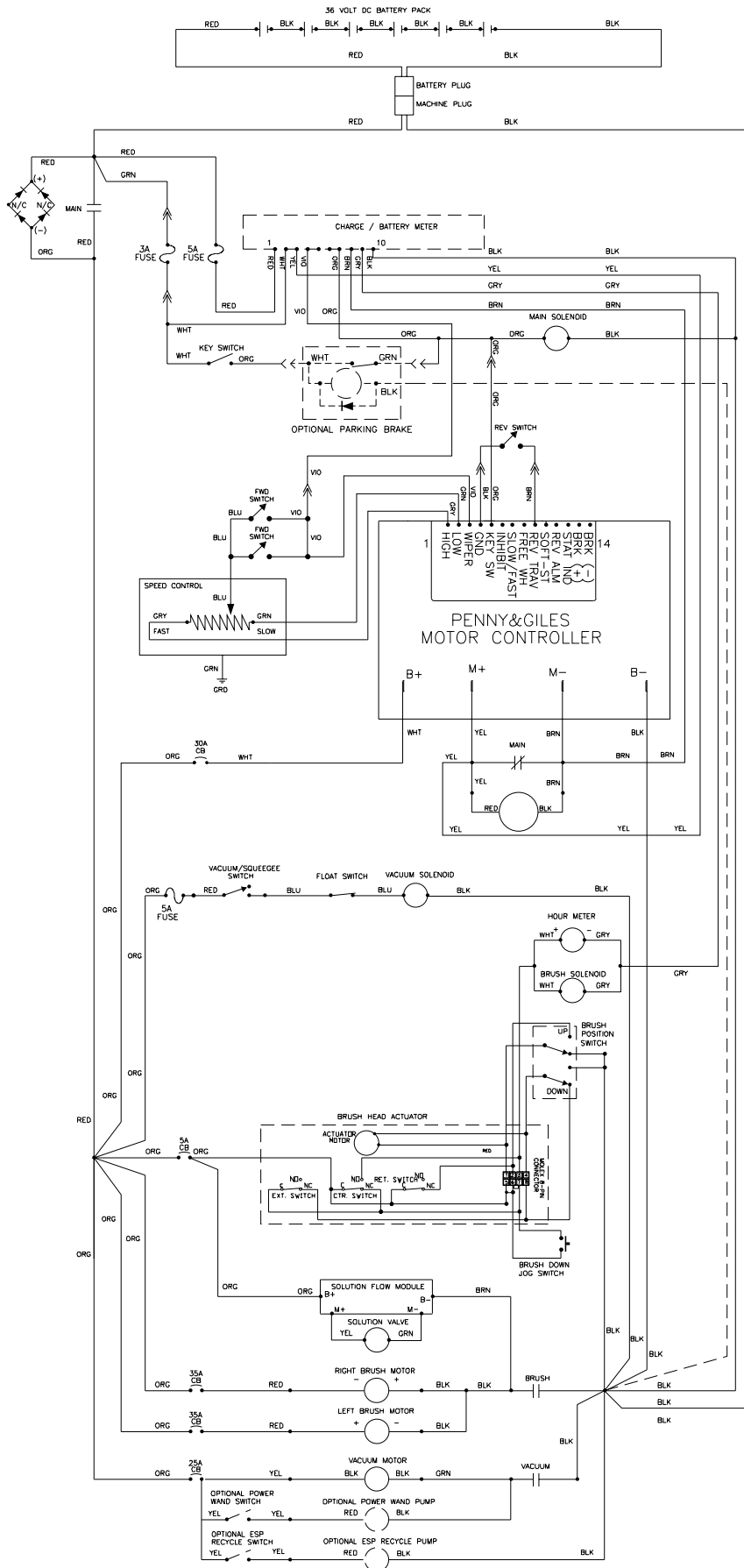
CLARKE TECHNOLOGY
SCRUBTEC 770 L / 784 L / 795 L
 Control Housing Connection Diagram 2/05



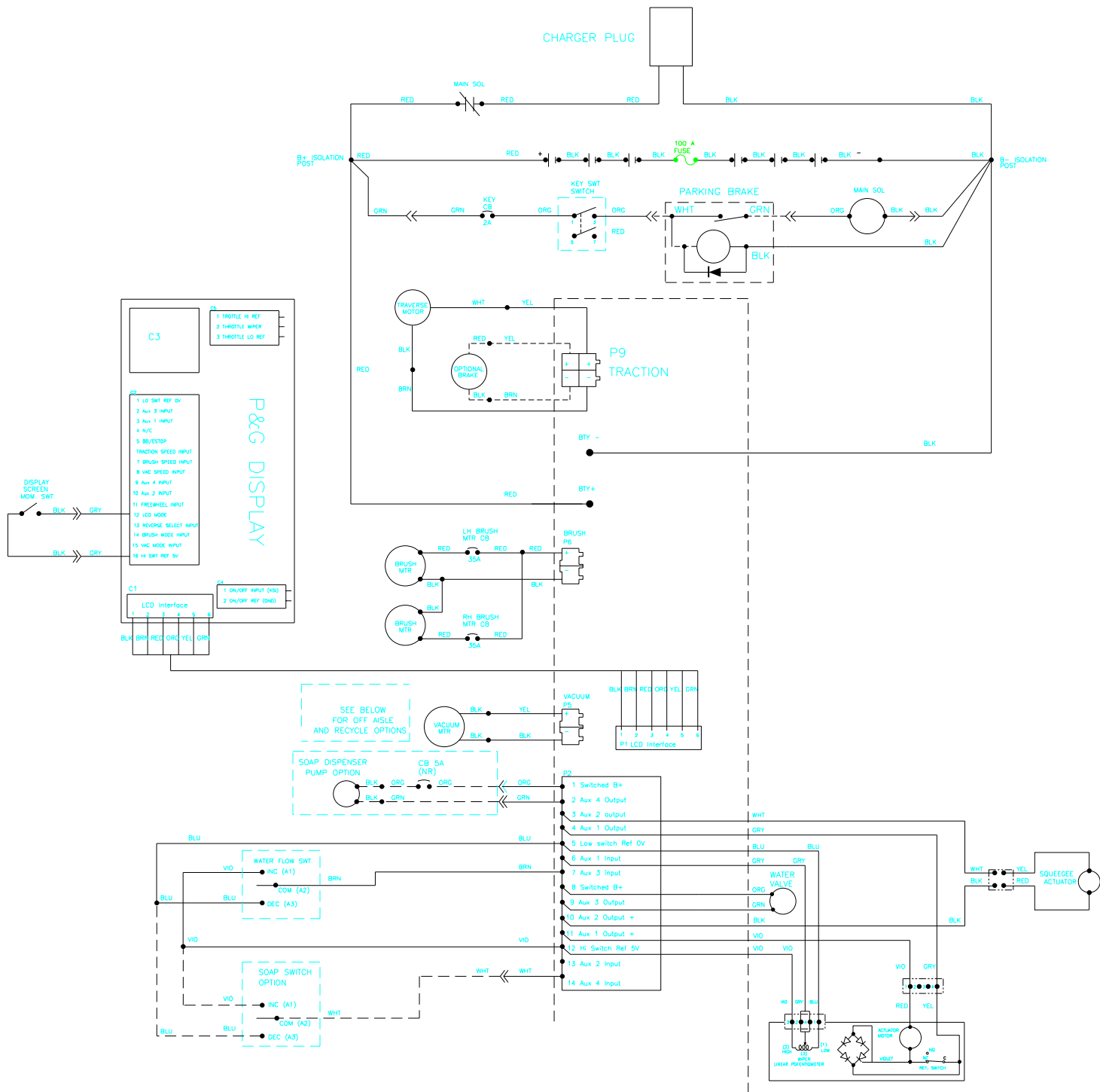
CLARKETECHNOLOGY

SCRUBTEC 770 S / 784 S / 795 S

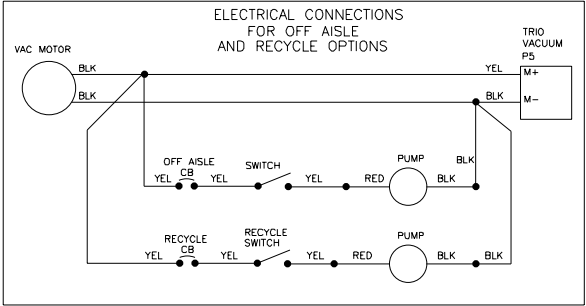
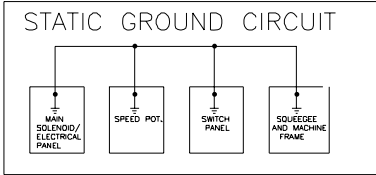
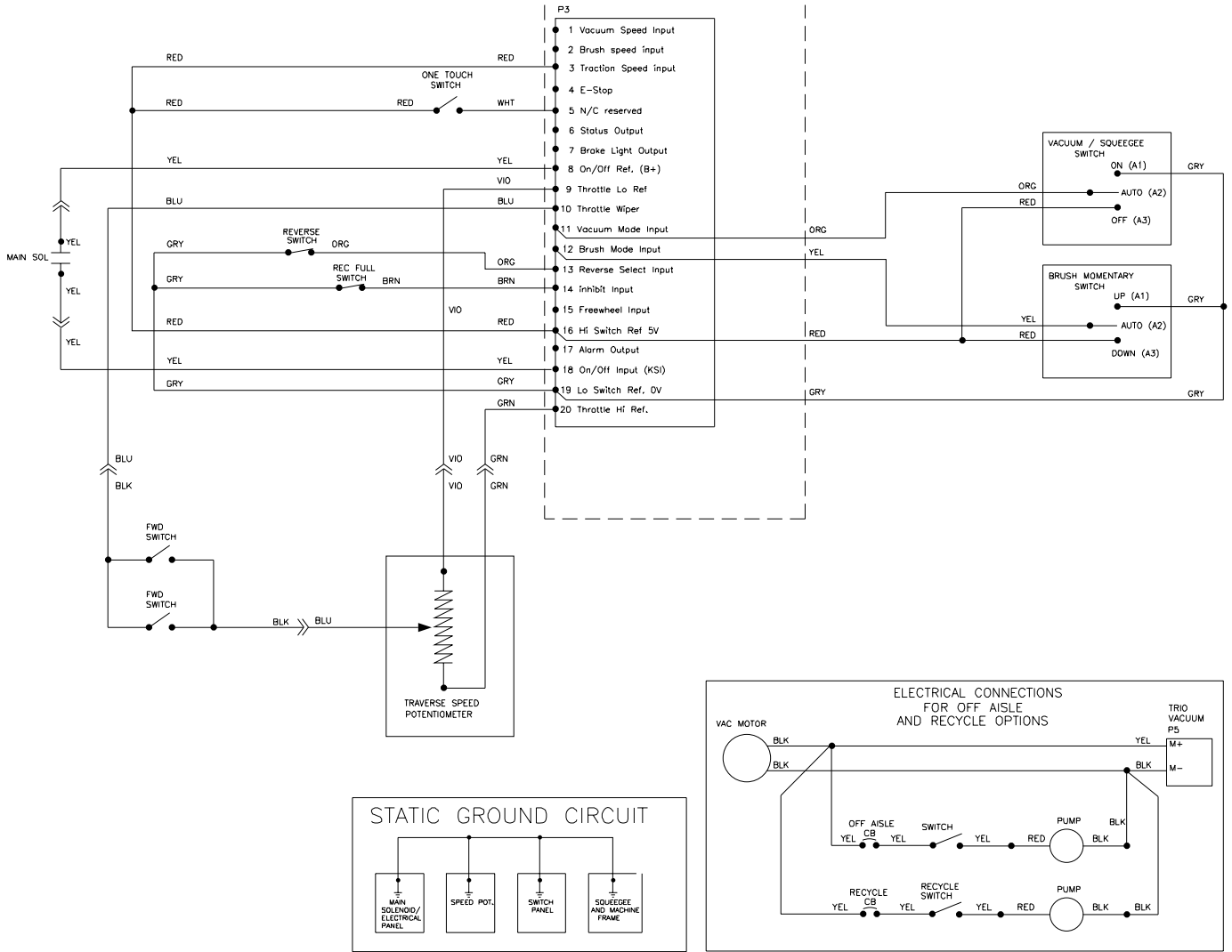
Electrical Schematic 9/05



CLARKE TECHNOLOGY
SCRUBTEC 770 L / 784 L / 795 L
 Electrical Schematic (pages 58 - 59) 9/05



CLARKETECHNOLOGY
SCRUBTEC 770 L / 784 L / 795 L
 Electrical Schematic (pages 58 - 59) 9/05



**SCRUBTEC 770 / 784 / 795
Accessories - 2/05**

ACCESSORIES

<u>Description</u>	<u>Part No.</u>
Power Wand System Kit	10892A
ESP Recycle System Kit	10894A
Soft Caster Asm.	52127A
Care Kit	14607A
Squeegee Asm., Optional 74 cm (770 model only)	18818A
Drive Wheel, Foam Filled	59955A
<i>Imperial</i> Electric Parking Brake Kit	10684A
Battery Maintenance System	53390A

Optional Squeegee Blades

Machine	Blade	Type	Material	Length	Part No.
770	Inner	Optional	Urethane, Ribbed	65.7 cm	30951A
770	Inner	Optional	Urethane, Notched, 1.5mm	65.7 cm	30955A
770	Inner	Optional	Urethane, Ribbed	91.1 cm	30952A
770	Inner	Optional-Grout	Urethane, Notched 1.5mm	91.1 cm	30957A
784	Inner	Optional	Urethane, Ribbed	102.2 cm	30953A
784	Inner	Optional-Grout	Urethane, Notched 1.5mm	104.1 cm	30958A
795	Inner	Optional	Urethane, Ribbed	116.8 cm	30954A
795	Inner	Optional-Grout	Urethane, Notched 1.5mm	116.8 cm	30959A
770	Outer	Optional	Nitrile, Solid	71.4 cm	30938A
770	Outer	Optional	Nitrile, Solid	97.8 cm	30936A
784	Outer	Optional	Nitrile, Solid	107 cm	30937A
795	Outer	Optional	Nitrile, Solid	122 cm	30939A

Brushes:	Size	Description	Part No.
	43.2 cm	Poly	11424B
	43.2 cm	Grit-Heavy	11425B
	43.2 cm	Grit-Medium	11430B
	43.2 cm	Grit-Lite	10384A
	43.2 cm	Soft Nylon	10875A
	35.6 cm	Poly	11427B
	35.6 cm	Grit-Heavy	11426B
	35.6 cm	Grit-Medium	11431B
	35.6 cm	Grit-Lite	10383A
	35.6 cm	Soft Nylon	10874A
	48.3 cm	Poly	11434B
	48.3 cm	Grit-Heavy	11433B
	48.3 cm	Grit-Medium	11432B
	48.3 cm	Grit-Lite	10385A
	48.3 cm	Soft Nylon	11435B

Pad Drivers:	Size	Part No.
	48.3 cm	17524B
	43.2 cm	17520C
	35.6 cm	17521C