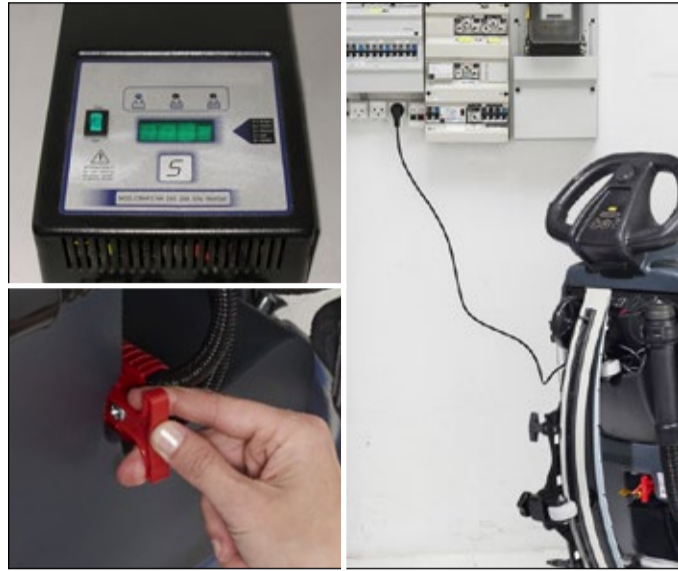


# Use and maintenance

## - SC401 (battery)

ATTENTION! Do not use the machine before you have read and understood the Instructions for use manual



- 1a. (external battery charger) Unplug the Battery charger cable. Reconnect it to the machine.  
1b. (on board battery charger) Disconnect the battery charger cable from the electrical socket.



2. Fill the tank with clean water and dosage a suitable detergent according to the specifications. The water temperature must not exceed 40 °C. Make sure the solution valve under the machine is open.



3. (if machine have detergent mixing) Fill the bottle with a detergent suitable for cleaning machines (highly concentrated and low foaming).



4. (if machine have detergent mixing) Activate machine with battery led only. Change the percentage of detergent in the cleaning solution by pressing the solution button for 2 sec., then toggle the battery led to desired setting by pushing the solution button.



5. Install the squeegee and fasten it with the knob. Lower the squeegee with the pedal.



6. Place the brush or the pad-holder under the deck. Use the appropriate brush to clean the floor. Lower the deck by pressing the pedal deck.



7. If machine has a ignition key first set it to "I", press the main button once to activate the machine. Battery indicator will turn on.



8. Press the main button again (with LED on) to start the machine, press the vacuum button and the main button simultaneously for 1 sec. to engage the brush to the deck hub.



9. For sensitive floors the brush/pad can be pre wetted with solution before starting to work to avoid marks. Press the main button and the solution button simultaneously for 10/20 seconds before starting to work.



10. Start cleaning by placing the hands on the touch sensors on the handlebar.



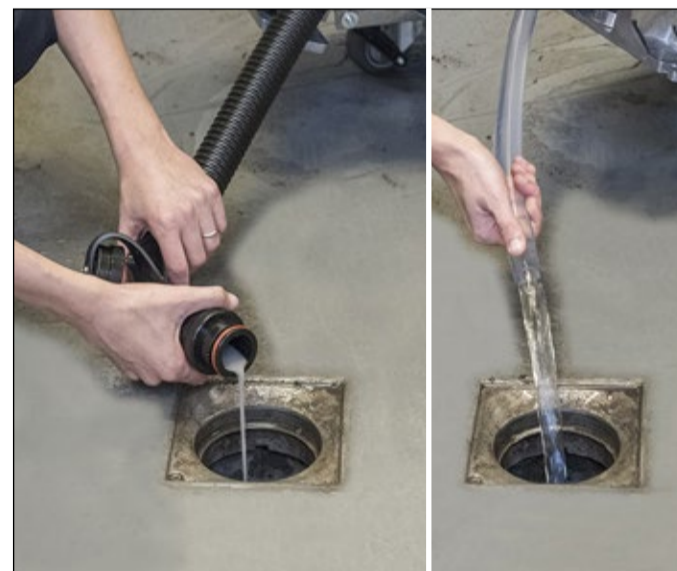
11. (for drive model) If necessary, adjust the maximum speed with the speed adjustment knob. For reverse, press the rear button of the handle together with one hand on any of the touch sensors.



12. Press the solution button to adjust the solution flow to the cleaning needs. When the LEDs are off, the solution flow is off. If necessary press the silent mode button for extra low sound level (with LED flashing).



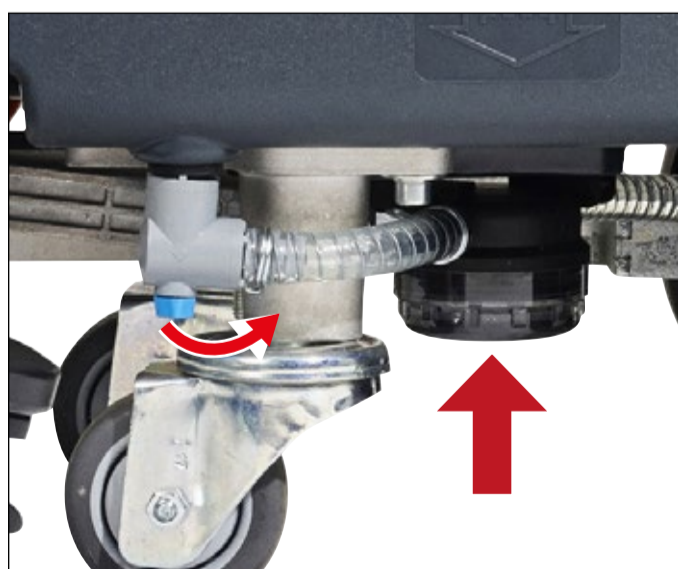
- At the end of the work  
13. Stop working. Lift squeegee and press the main switch to turn machine off but with battery led still on. Lift the brush deck by pressing the pedal. To disengage the brush, press the vacuum button and the main button simultaneously for 1 sec..



14. Empty the recovery tank with the hose. Then empty the solution tank with the transparent hose.



15. Empty the debris tray and clean/wash the recovery tank inside.



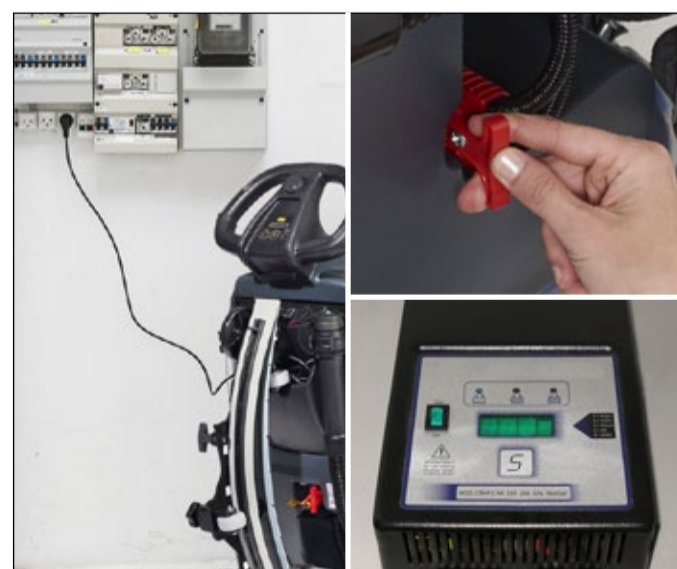
16. Clean the filter:  
A) Close the solution valve under the machine.  
B) Remove the transparent cover and the gasket, then remove and clean the filter inside.  
C) Reassemble the filter.



17. Take the squeegee off and remove debris. Check and clean the squeegee blades.



18. Clean the machine using a damp cloth and where needed use a neutral cleaning product.



19. Charge the batteries: Connect the battery charger cable to the electrical socket.



20. Park the machine with the recovery tank cover open.

If the machine has been used with the left LED light lit only, on the battery level indicator, a full recharge of the batteries (10-12 hours) will be required. Failure to carry out this procedure may cause damage to the batteries. Charging the batteries after every use is recommended.

PLEASE ENSURE THE CHARGER IS ALWAYS CONNECTED TO THE BATTERIES EVEN IF NOT USED FOR LONGER PERIOD OF TIME TO PREVENT DAMAGE TO THE BATTERY DUE TO LOW VOLTAGE

# Troubleshooting

## - SC401 (battery)

ATTENTION! Do not use the machine before you have read and understood the Instructions for use manual

The machine doesn't work as it should?



1. Check if the power cable is correctly connected.



2. Check if the battery is charged.



3. Check if the battery correctly mounted. (\*)

(\*) For these causes the maintenance procedure must be performed by an authorised Nilfisk Service Center.

For further information refer to the Service Manual, available at any Nilfisk Service Center.

The suction doesn't work as it should?



1. Check if the suction hose is correctly installed and cleaned.



2. Open the recovery tank and check the debris tray and float are clean and working.



3. Check if squeegee blades are damaged or dirty.

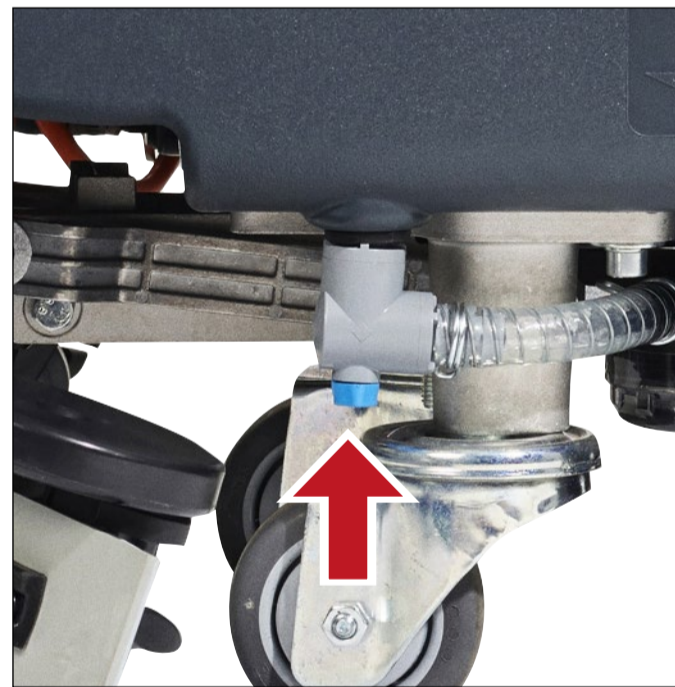


4. Check the lid gasket is in good and working condition and sealing when lid is closed.

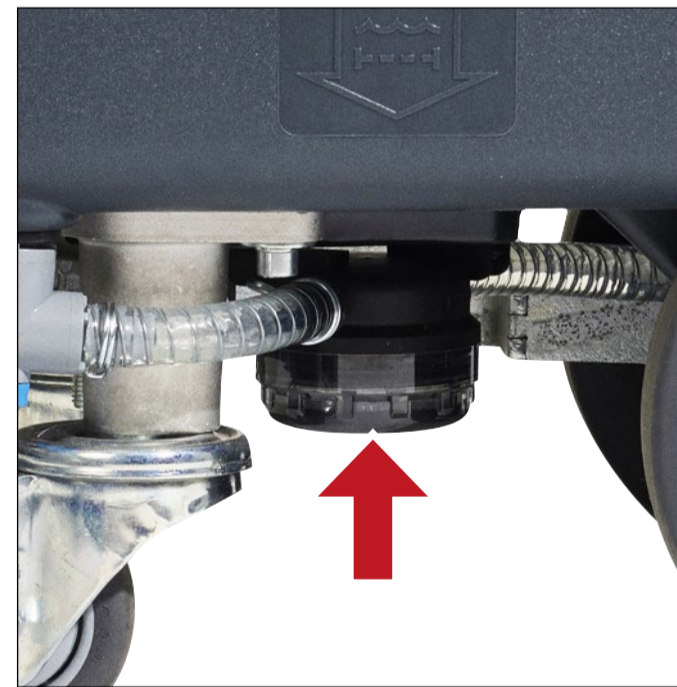
The machine doesn't clean as it should?



1. Check if you have the right detergent and water settings.



2. Check if the solution valve is open.



3. Check if the solution filter is cleaned.



4. Check the detergent system is cleaned, eventually purge the system.

The brush doesn't work as it should?



1. To adjust machine direction turn front knob until machine is working straight.



2. Check if there isn't any brush motor overload indicated by Led's blinking.



2. Check if the brush are correctly installed and not worn out or if there are external materials avoiding brush rotating.