

Onboard Battery Charger Set Up Instruction (AS850R)

Warning! This procedure must be performed by qualified personnel only.

1. Battery charger terminals definition.

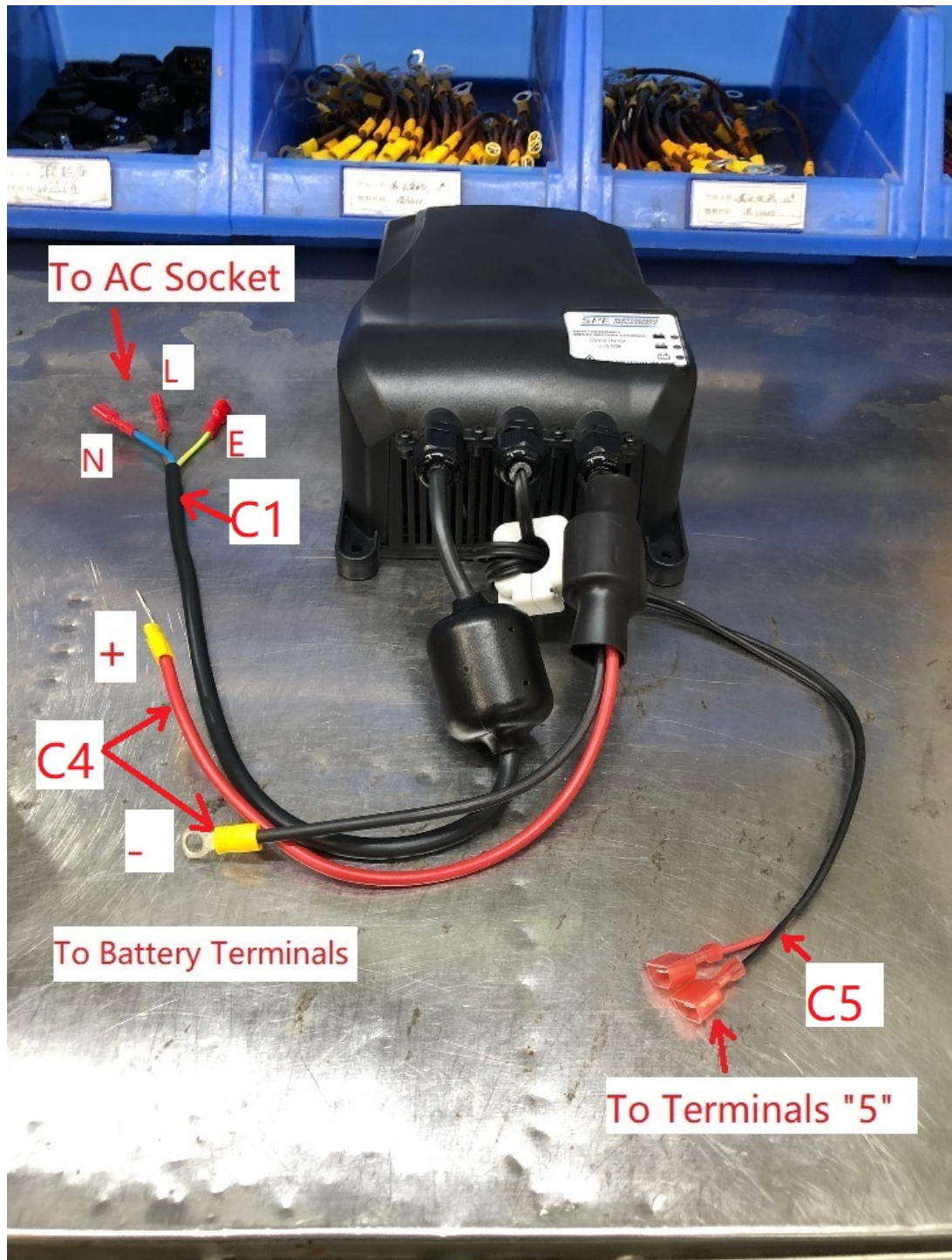


Figure 1

Onboard Battery Charger Set Up Instruction (AS850R)

2. Disconnect the battery connector.

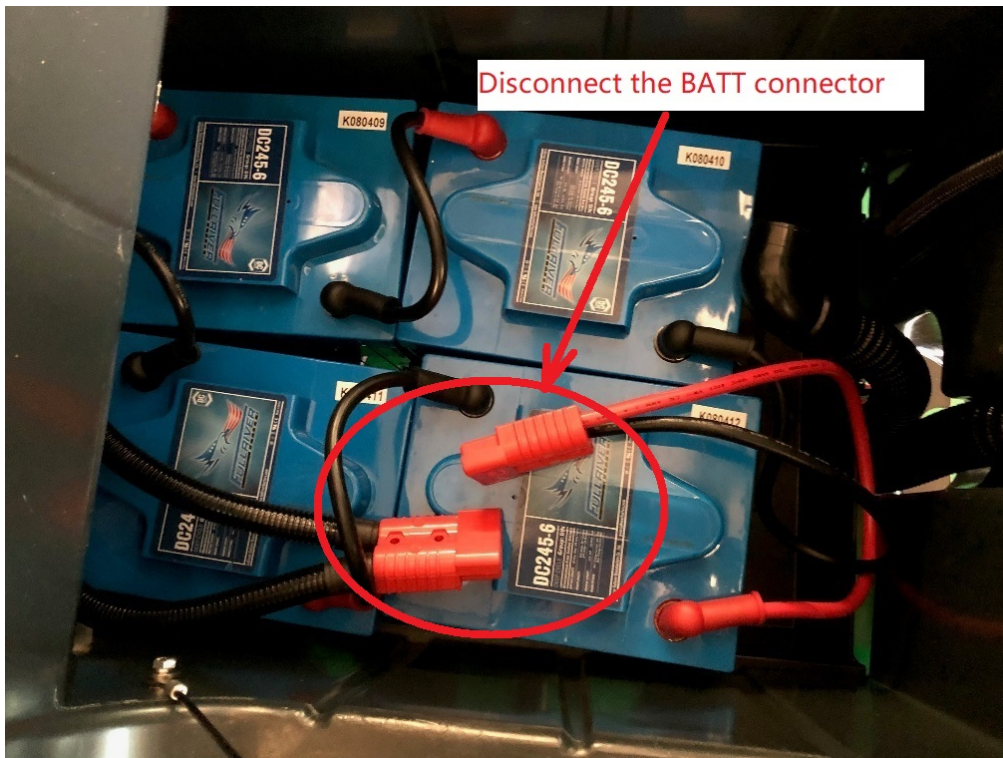


Figure 2

3. Remove the screws and open the electric cabinet.



Figure 3

Onboard Battery Charger Set Up Instruction (AS850R)

4. Remove the screws, disassemble the socket and "Ground" cord.

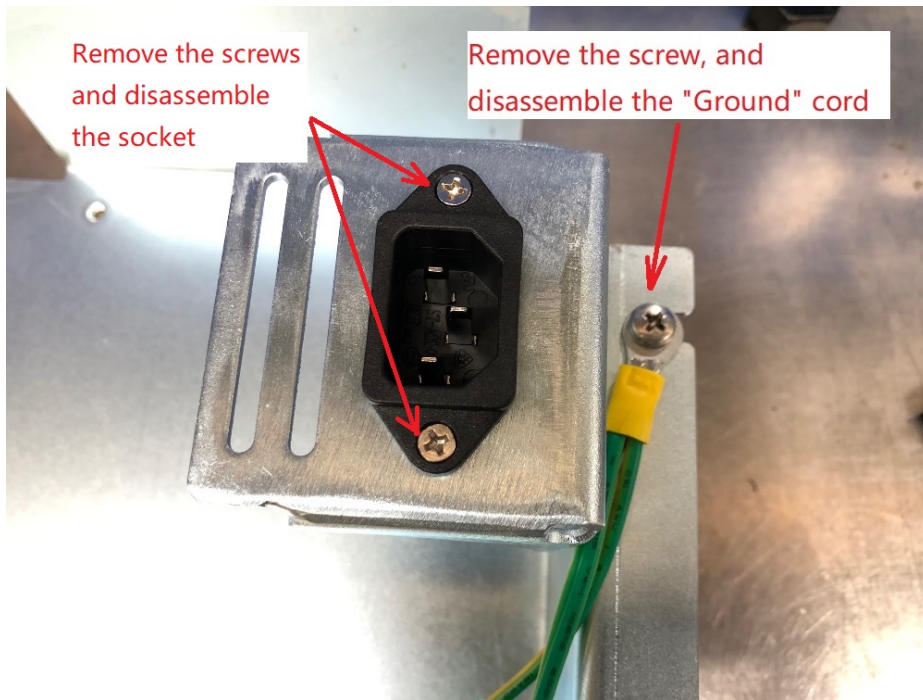


Figure 4

5. Connect the "Ground" wire (shorter one) to the "Ground" wire of the battery charger.

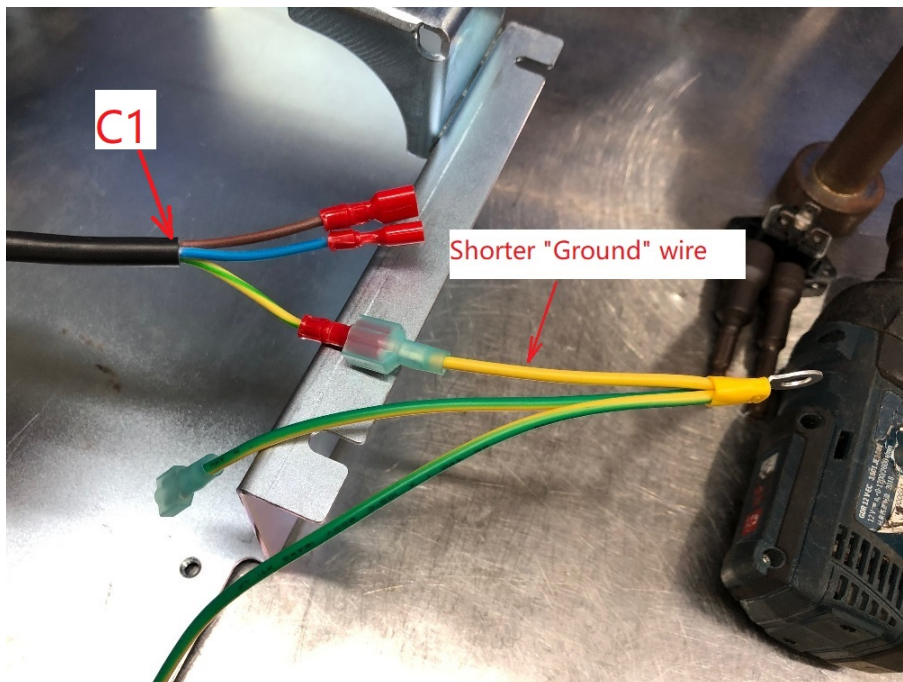


Figure 5

Onboard Battery Charger Set Up Instruction (AS850R)

6. Tidy the AC cord as Figure 6 show.

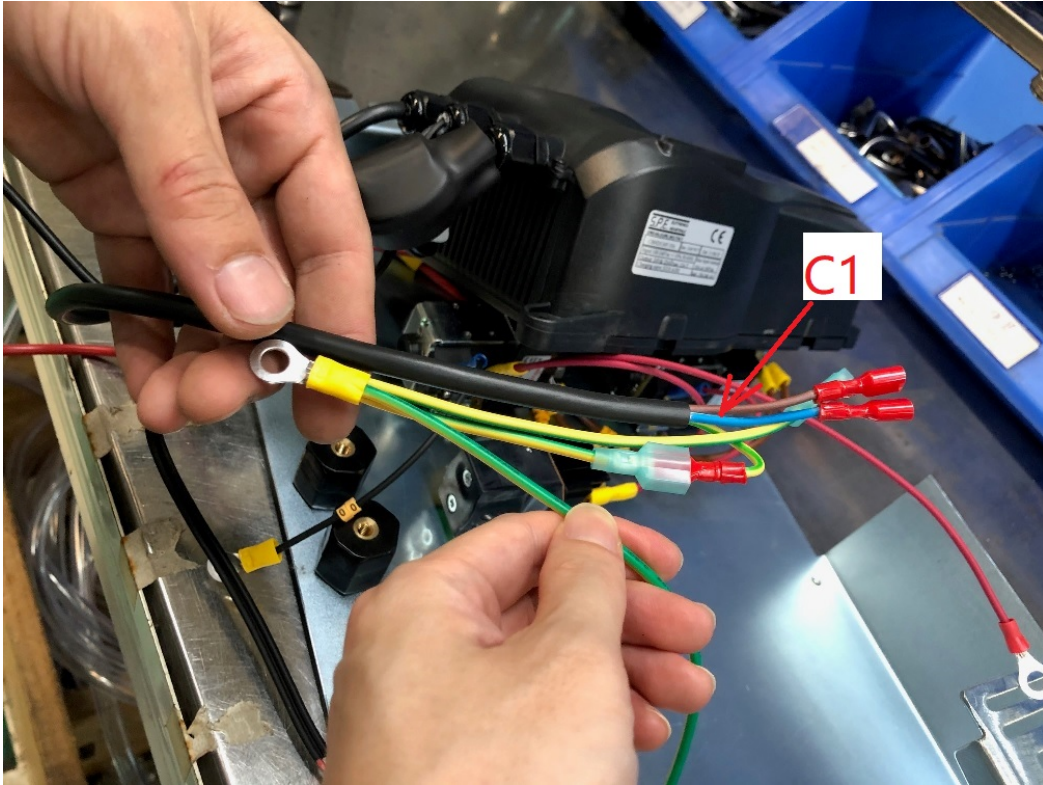


Figure 6

7. Sheathe the AC cord just tidied with heat shrink tube.

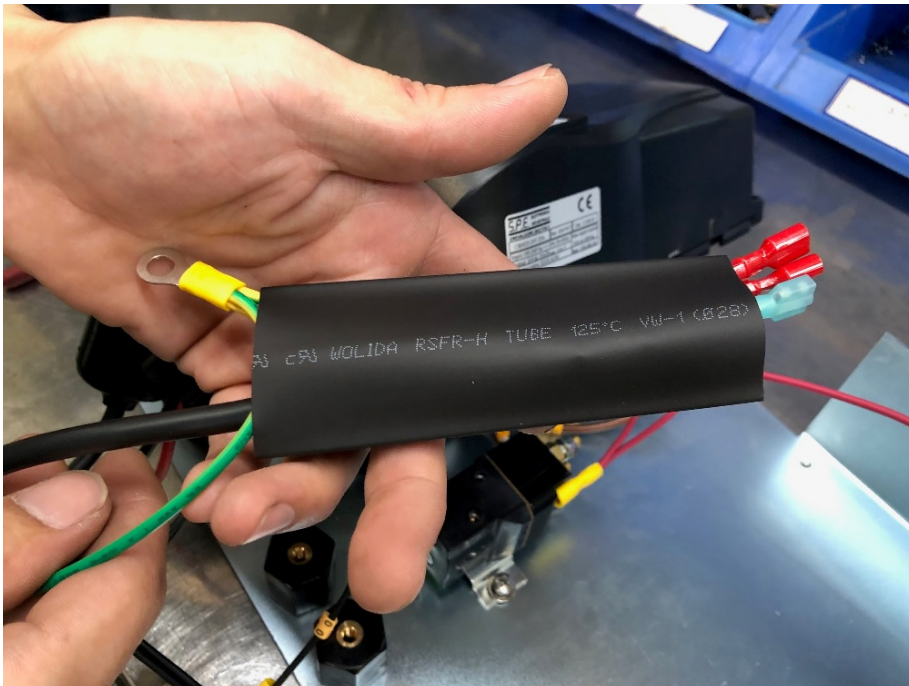


Figure 7

Onboard Battery Charger Set Up Instruction (AS850R)

8. Connect the AC cord of battery charger to the AC socket with right polarity (N-Left, L-Right, E-Up).

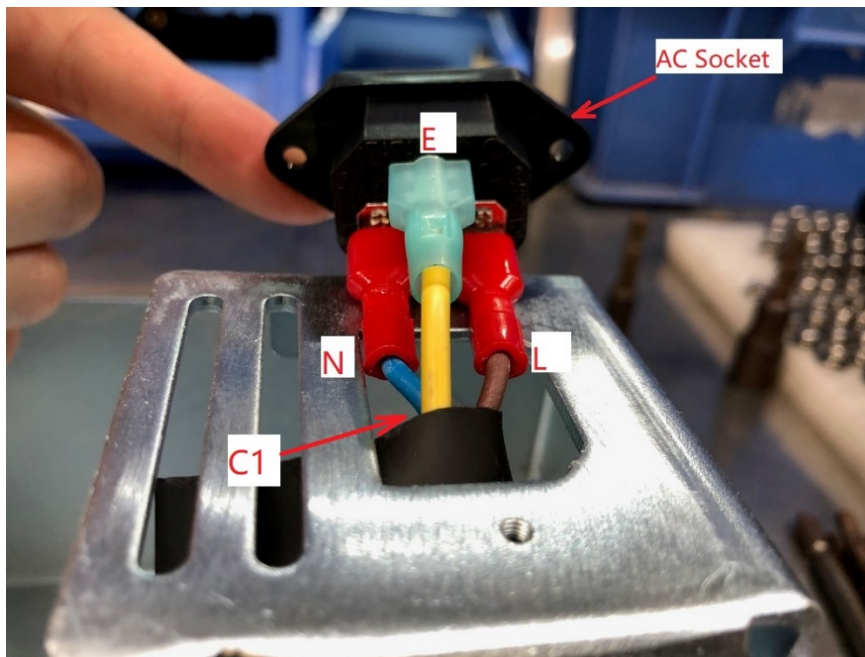


Figure 8

9. Set up the AC socket and fix the screws, then push the heat shrink tube touching the body of the socket.



Figure 9

Onboard Battery Charger Set Up Instruction (AS850R)

10. Heat the heat shrink tube with hot air gun.



Figure 10

11. Set up the battery charger.

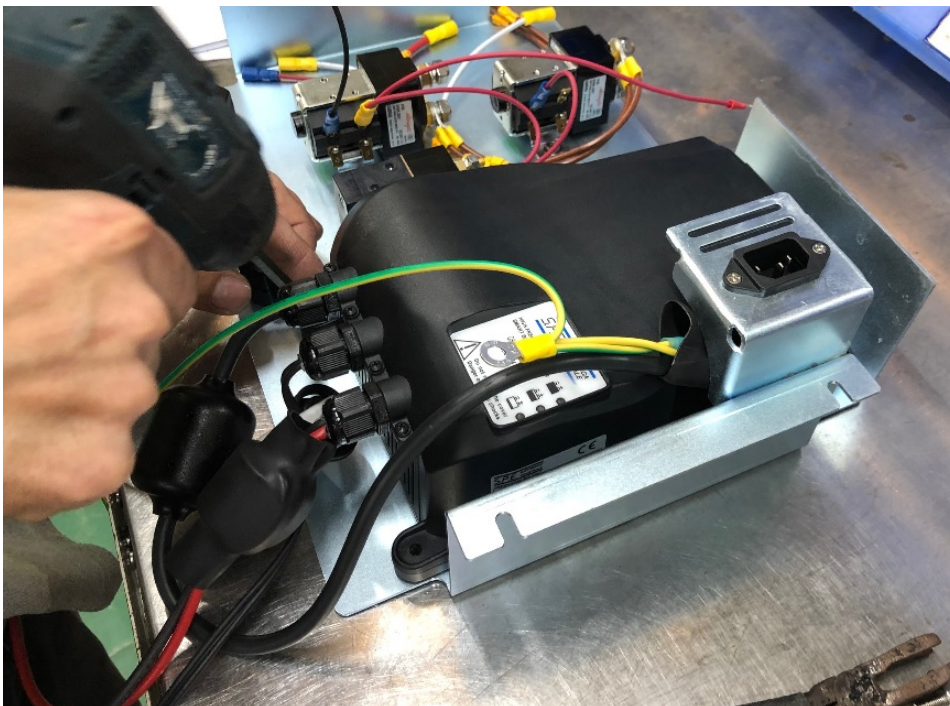


Figure 11

Onboard Battery Charger Set Up Instruction (AS850R)

12. Fix the "Ground" cord with the screw.

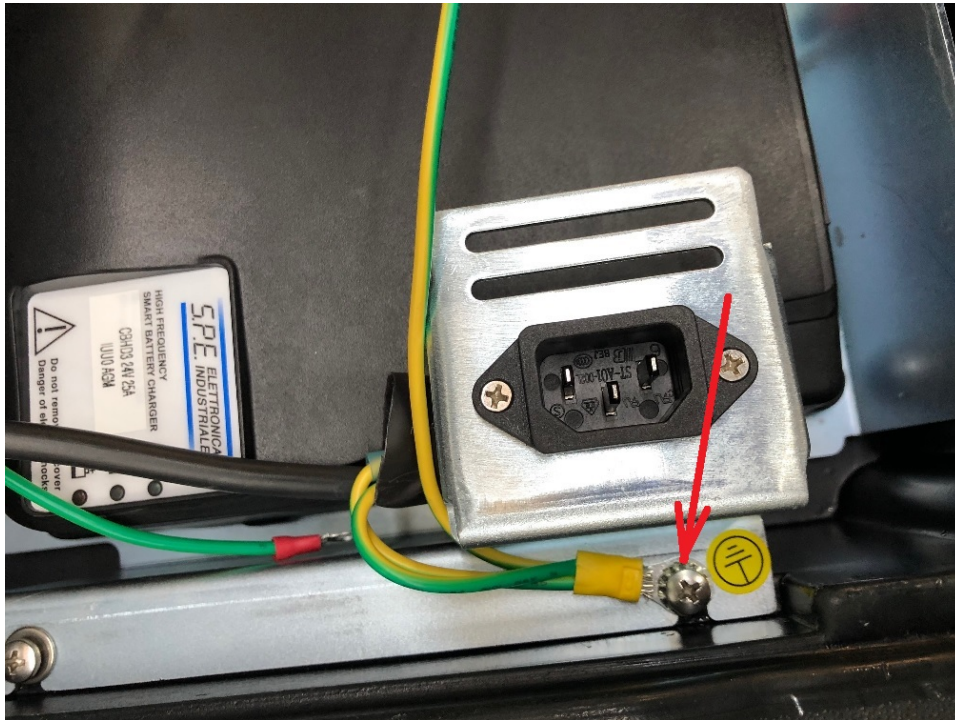


Figure 12

13. Remove the changeover wire between the two "No.5" terminals.

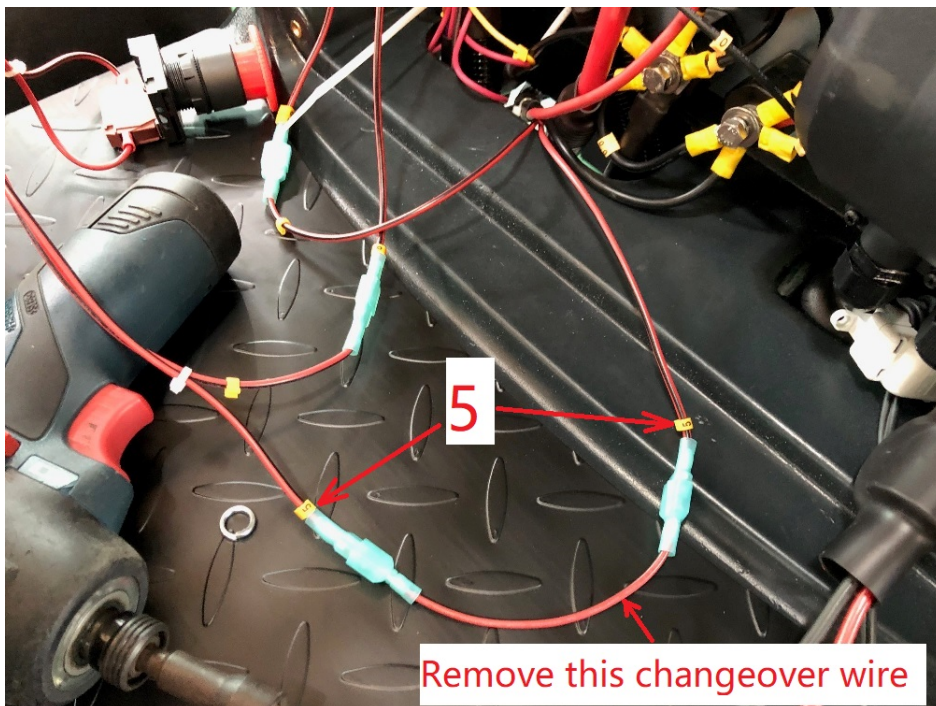


Figure 13

Onboard Battery Charger Set Up Instruction (AS850R)

14. Cord "C5" of battery charger connect to the terminals "No.5"
(Don't care the polarity).

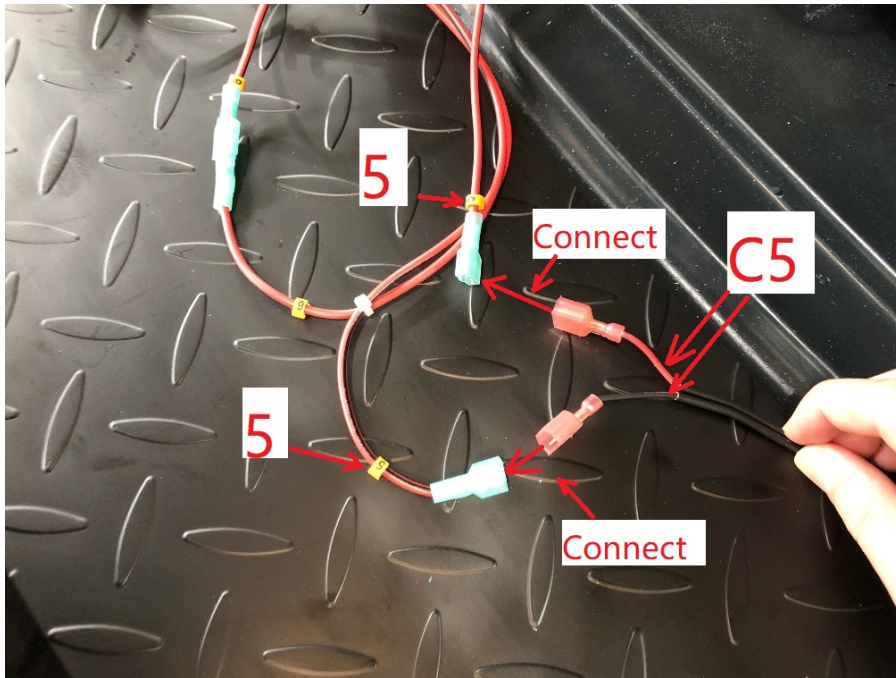


Figure 14

15. Connected

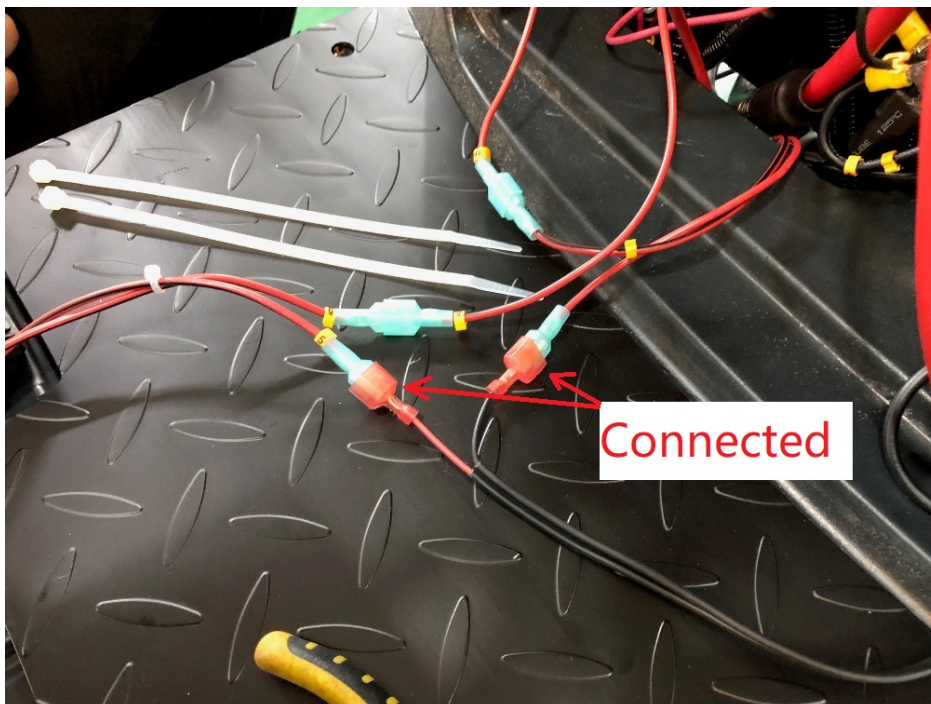


Figure 15

Onboard Battery Charger Set Up Instruction (AS850R)

16. Connect the positive output of the cord "C4" (BATT charger DC output) to the positive terminal, connect the negative output of the cord "C4" to the negative terminal as Figure 16 show.

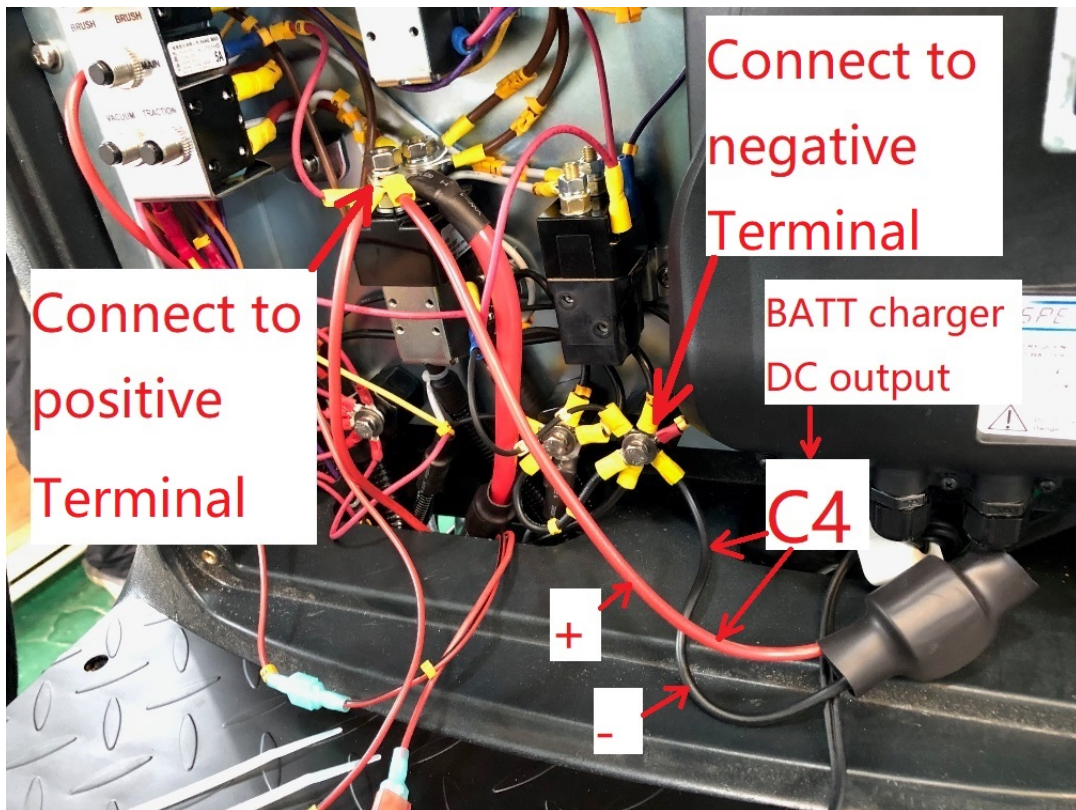


Figure 16

Onboard Battery Charger Set Up Instruction (AS850R)

17. Set up the electric cabinet cover, then fix the screws.



Figure 17

18. Re-engage the battery cord terminal.

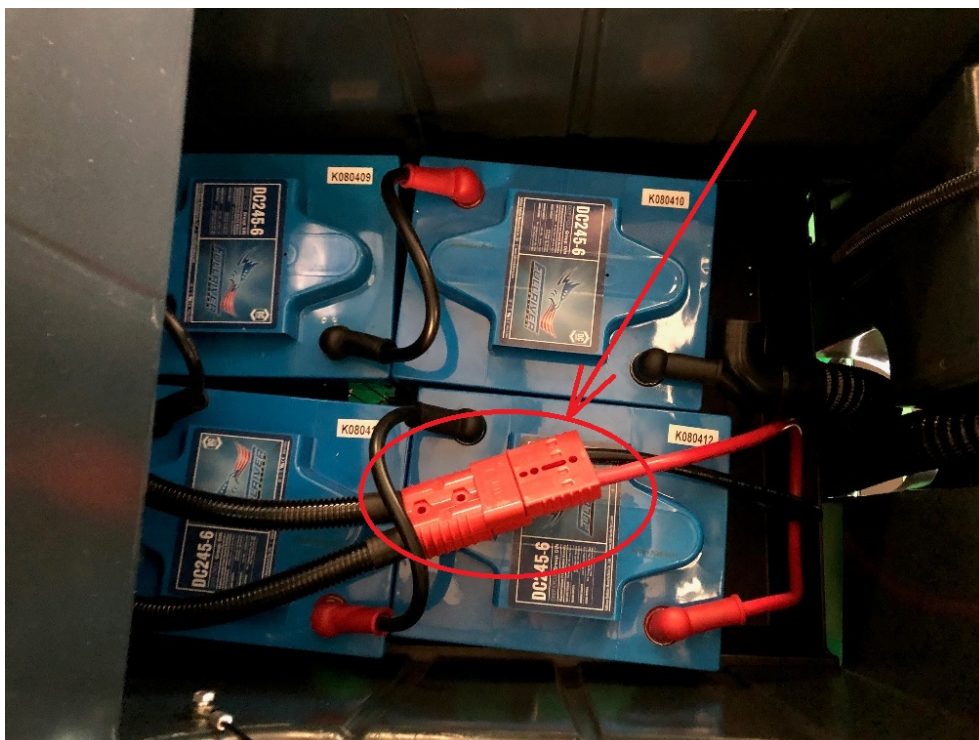


Figure 18

19. Plug in the power



Figure 19

--THE END--