



07351-5758060

kontakt@nilfisk-alto-shop.com



**Preisabfrage bzw. Bestellungen der Artikel im Shop unter**

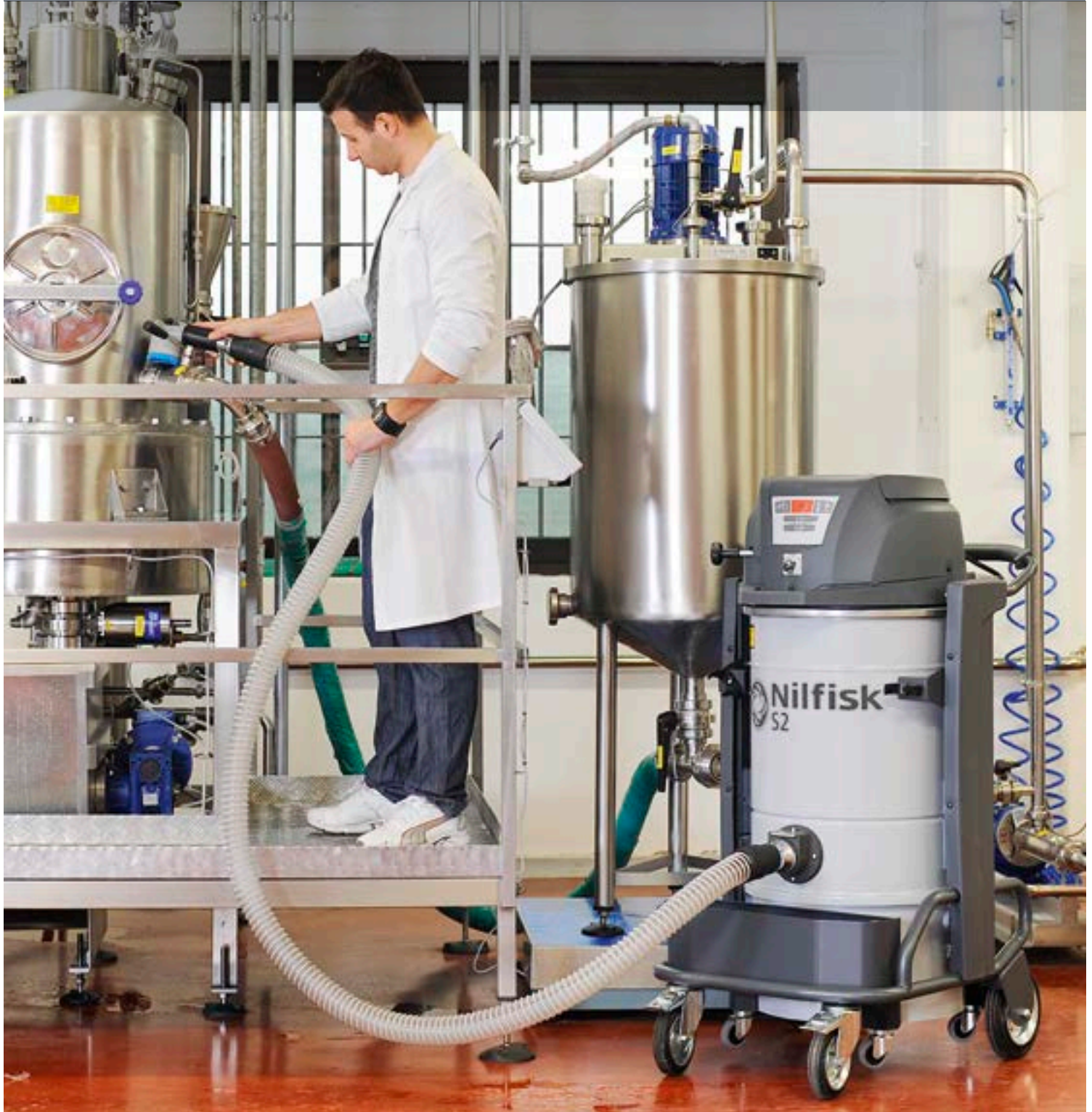
**[www.nilfisk-alto-shop.com](http://www.nilfisk-alto-shop.com)**

**einfach die Artikelnummer in die Suchmaske eingeben**

**(Bitte die Artikelnummer ohne Leerzeichen eingeben)**

S2-S3

# The first digital and fully modular industrial vacuums







Cleaning of a metal company



Star filter



S3 with gravity unload system with Longopac®



Cleaning of production lines

# S2 and S3, The best way to work

Reliable and easy to use, here the singlephase industrial vacuums for your company

The range of singlephase industrial vacuums S2 and S3 has been designed following the result of market surveys carried out to define actual and future solutions in industrial vacuuming for the manufacturing world.

Some new features make these vacuums unique:

- the electronic board control allows an easy use and the continuous monitoring of the vacuum efficiency; it allows a functional control of some options such as the solid or liquid cut-offs. It's a real "dashboard", significantly increasing the operational efficiency.
- the modularity: these vacuums can be modified in few minutes, for example by replacing the collecting system.
- ergonomics: the new singlephase vacuums are light, easy to use and to move around and they grant the utmost safety, being available in L, M and H certified versions.

Last but not least, these vacuums have a modern and attractive design (registered).

Available in more than 90 variants including the certified versions (TüV, L-M-H), models S2 and S3 are the starting point of the future of industrial vacuum technology.

## Now working is easier!

From the discharge to the moving systems, discover new solutions for your work

**Filtration systems:** besides the star filter, available in L and M class, the vacuum can be equipped with an HEPA H14 absolute filter which can retain toxic and hazardous dust.

**Filter cleaning systems:** two versions available: the standard system with a highly efficient manual filter shaker, and the version with the electric filter shaker.

**Disposal systems:** model S2 is available with a 40 liter container, model S3 with a 50 or 100 liter container. They can be both supplied with gravity unload system to be used with collecting bag or with Longopac® discharge system. The Longopac® system allows the collection of material in an "endless" bag which can be filled with the desired quantity and then cut, disposed and immediately restored for a new use.

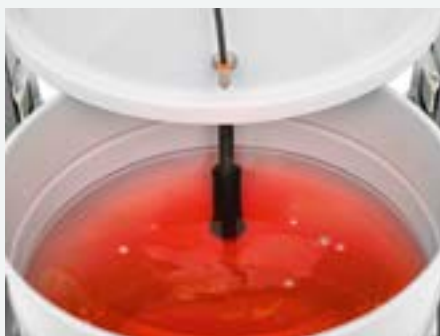
**Lifting system:** an useful kit, consisting of support, belt and handles, allows to move the vacuum by a forklift or a bridge crane.



# The features you were waiting for: when efficiency comes from control



Solid cut-off system



Liquid cut-off system



Safe bag for toxic material



Manual filter shaker



Electronic board control



Fixed nozzle

## Technical specifications

Description	Unit	S2	S3
Voltage	V	230	230
Frequency	Hz	50-60	50-60
Protection class	IP	44	44
Insulation class	Class	I	I
Rated power	kW	2	3
Airflow without hose	L/min	5.500	8.100
Vacuum max	kPa	21,1	21,1
Sound pressure level	dB(A)	70	71
Container capacity	L	40	50-100
Main filter area	cm <sup>2</sup>	19.500	19.500
Inlet	mm	70	70
Length x Width x Height	cm	80x60x123	80x60x130-158
Weight	kg	62	68-71