

# PARTS LIST

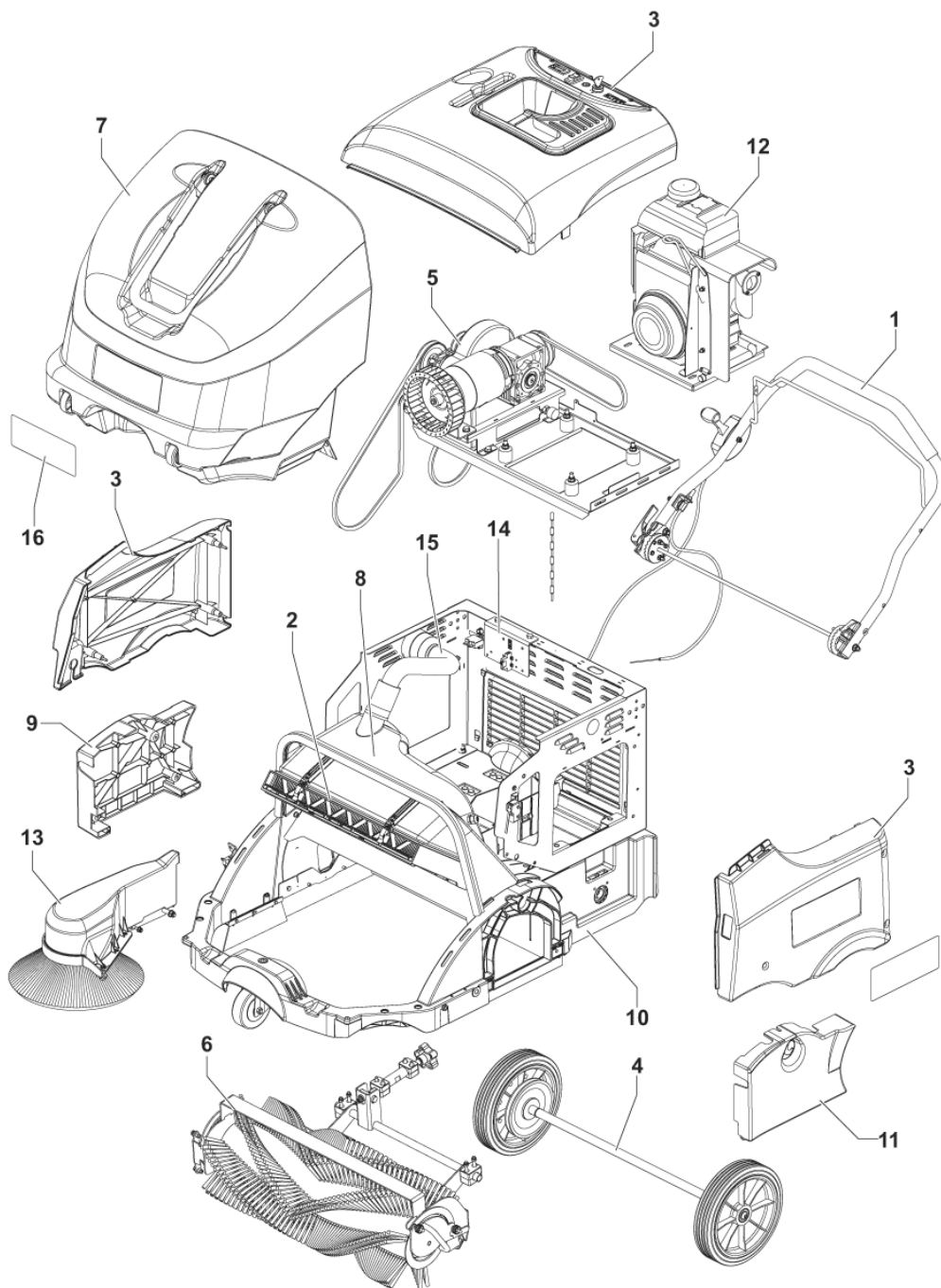


2022.06.15

# TABLE OF CONTENTS

---

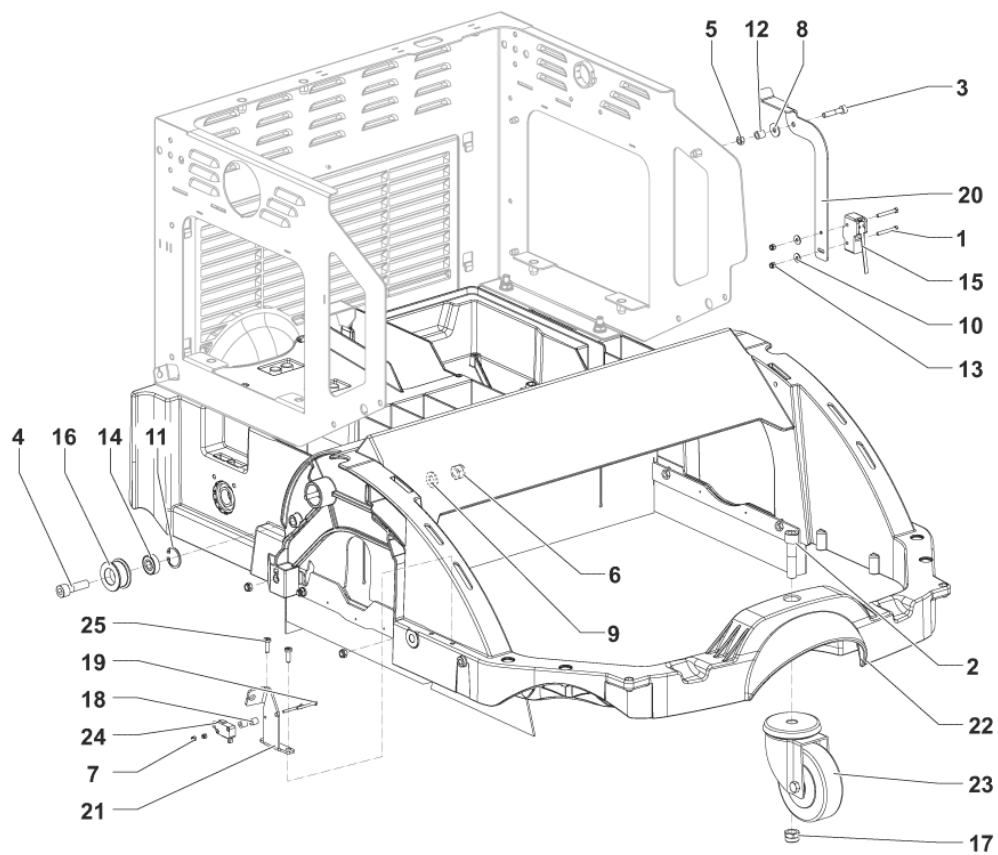
GENERAL VIEW .....	1
CHASSIS SYSTEM .....	3
CONTROL PANEL SYSTEM .....	5
COVERS SYSTEM .....	7
ELECTRICAL SYSTEM .....	9
ENGINE SYSTEM .....	11
FILTER SHAKER SYSTEM .....	13
FILTER SYSTEM .....	15
FRAME SYSTEM .....	17
HANDLE SYSTEM .....	19
HOPPER SYSTEM .....	21
SKIRT SYSTEM .....	23
Option .....	25
ACCESSORIES .....	27
TRANSMISSION SYSTEM .....	29
LEFT BROOM (OPTIONAL) .....	32
WHEELS SYSTEM .....	35
MAIN BROOM SYSTEM .....	37
WIRING DIAGRAM .....	39
RIGHT BROOM .....	41
Recommended spare parts .....	43



Pos.	Artikel-Nr.	Menge	Variante	Notes
1		1	HANDLE BAR ASSEMBLY	[1]
2		1	FILTER ASSEMBLY	[2]
3		1	COVERS PROTECTION ASSEMBLY	[3]
4		1	WHEELS TRACTION ASSEMBLY	[4]
5		1	TRANSMISSION ASSEMBLY	[5]
6		1	MAIN BROOM ASSEMBLY	[6]
7		1	HOPPER ASSEMBLY	[7]
8		1	SHAKER ELECTRIC FILTER ASSEMBLY	[8]
9		1	HATCH RIGHT ASSEMBLY	[3]
10		1	CHASSIS ASSEMBLY	[9]
11		1	HATCH LEFT ASSEMBLY	[3]
12		1	ENGINE ASSEMBLY	[10]
13		1	BROOM RIGHT SIDE ASSEMBLY	[11]
14		1	WIRING SYSTEM ASSEMBLY	[12]
15		1	WET BY-PASS ASSEMBLY	[2]
16	1465458000	1	DECALS SW900 84 B/P KIT	

## Part Notes:

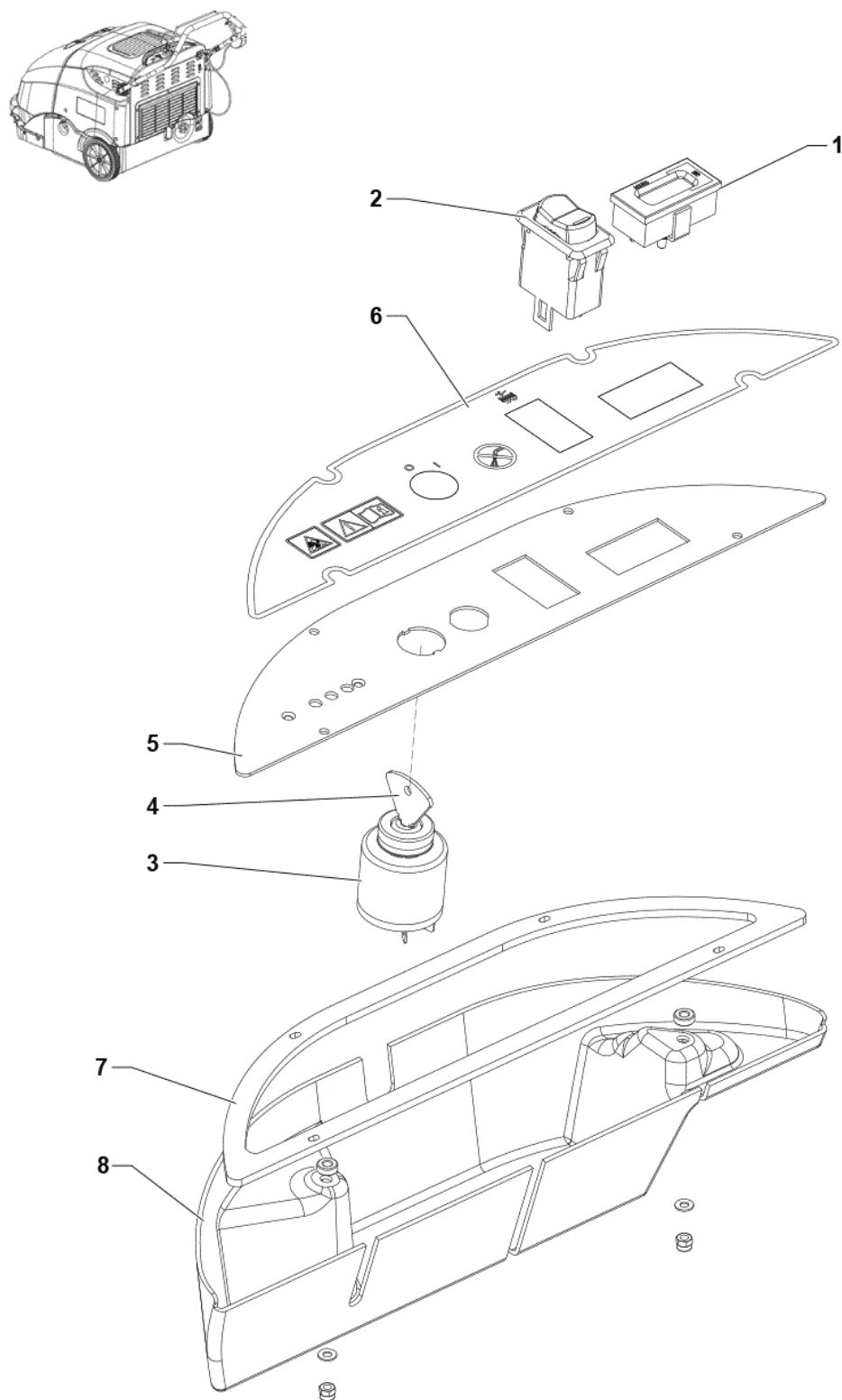
- [1] - SEE HANDLE SYSTEM
- [2] - SEE FILTER SYSTEM
- [3] - SEE COVERS SYSTEM
- [4] - SEE WHEELS SYSTEM
- [5] - SEE TRANSMISSION SYSTEM
- [6] - SEE MAIN BROOM SYSTEM
- [7] - SEE HOPPER SYSTEM
- [8] - SEE FILTER SHAKER SYSTEM
- [9] - SEE FRAME SYSTEM
- [10] - SEE ENGINE SYSTEM
- [11] - SEE RIGHT BROOM
- [12] - SEE ELECTRICAL SYSTEM



Pos.	Artikel-Nr.	Menge	Variante	Notes
1		2	K1	
2		1	K1	
3		1	K1	
4		1	K1	
5		1	K1	
6		1	K1	
7		2	K1	
8		1	K1	
9		1	K1	
10		2	K1	
11		1	K1	
12		1	K1	
13		2	K1	
14		1	K1	
15	1466506000	1	MICROSWITCH 10A 250V PKD	
16		1	K1	
17		1	K1	
18		2	K1	
19		2	K1	
20	1464998000	1	BRACKET FOR CONTAINER-COVER SWITCH	
21	1465013000	1	SUPPORT RIGHT SIDE BROOM SWITCH	
22	1467829000	1	CHASSIS PLAST. SIP	
23	909 6602 000	1	Lenkrolle	
24	9100000792	1	MICROSWITCH 16A 250V PKD	
25		2	K1	
K1	1465461000	1	HARDWARE CHASSIS KIT	[1]

## Part Notes:

[1] - NOT SHOWN

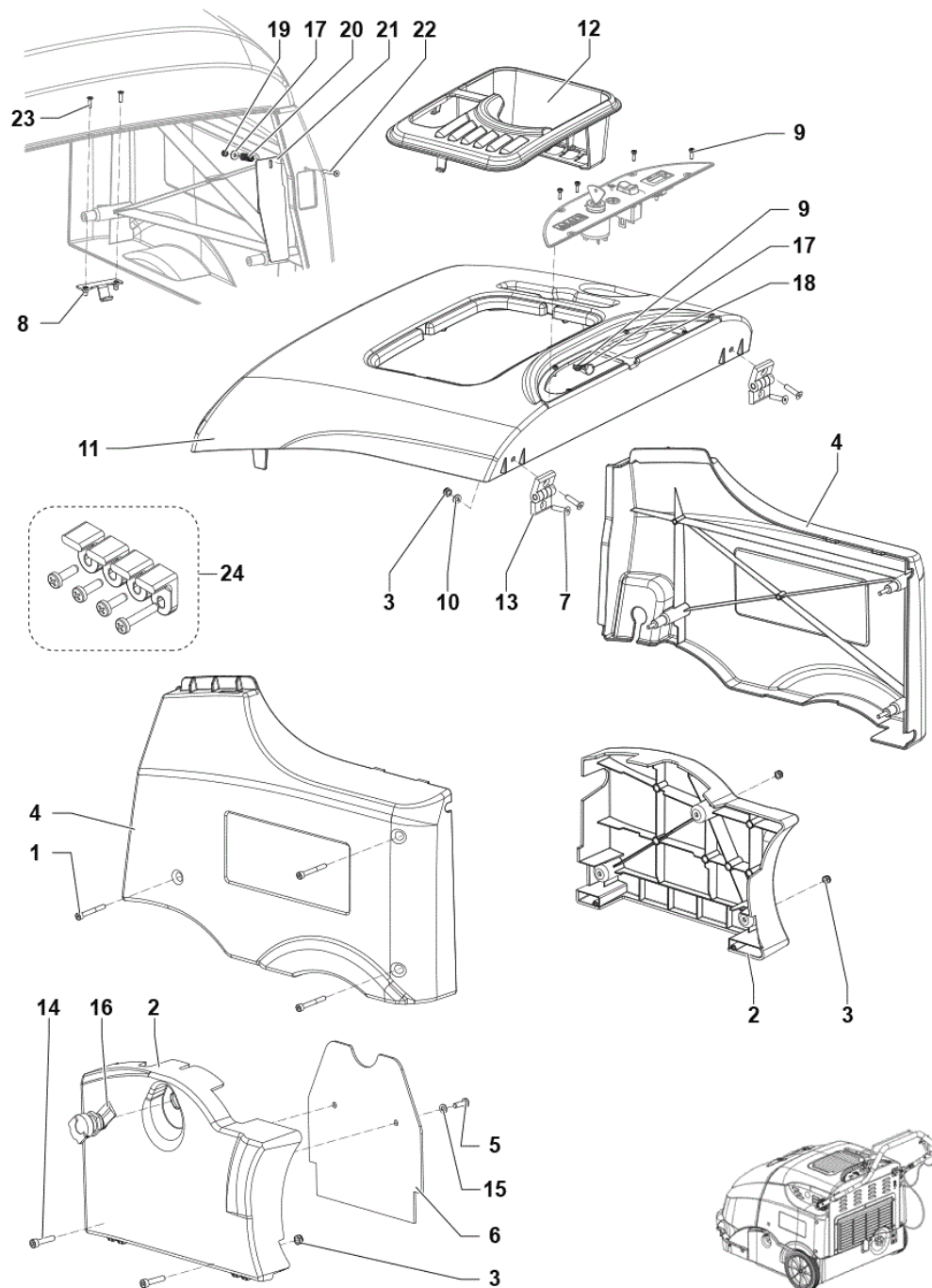


Pos.	Artikel-Nr.	Menge	Variante	Notes
1	9096951000	1	Betriebsstundenzähler 24V	
2	1465465000	1	Schalterkit	
3	33020442	1	Schlüsselschalter	
4	1467014000	1	KEY F STARTER SWITCH 2 PCS SET	
5	1464765000	1	PANEL CONTROL	[1]
5	1467613000	1	PANEL CONTROL GALV. KIT	[2]
6	1465005000	1	DECAL CONTROL PANEL	
7	1467612000	1	GASKET F CONTROL PANEL SIP	[2]
8	1467614000	1	COVER PLASTIC F PANEL CONTROL KIT	[2]

## Part Notes:

- [1] - STOCK COVERS GUARANTEE  
UNTIL S/N - 3810180800024
- [2] - STARTING FROM S/N - 3810180800025

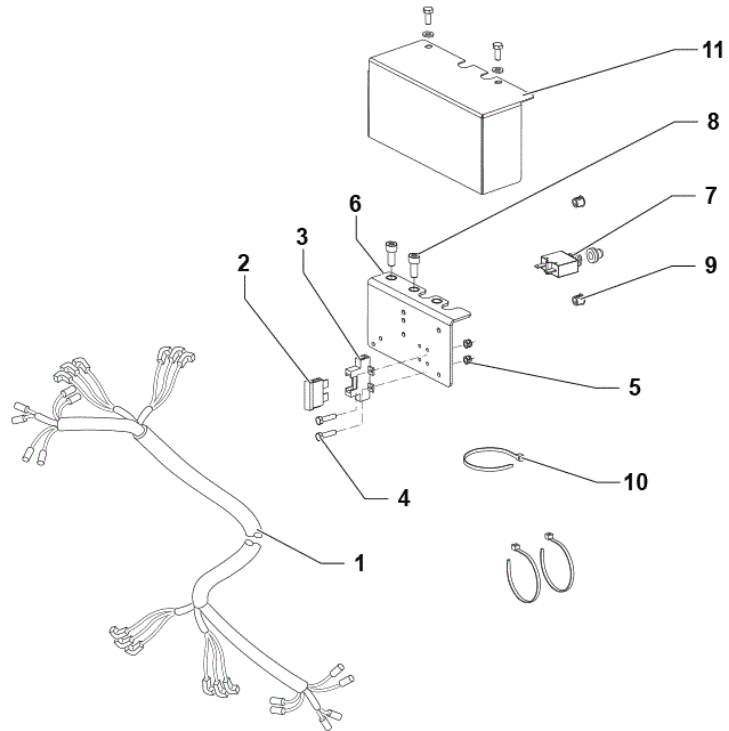
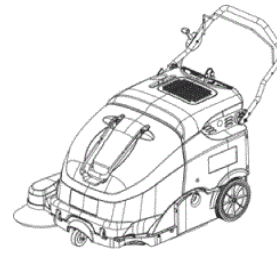




Pos.	Artikel-Nr.	Menge	Variante	Notes
1		6	K1	
2	1465545000	1	COVER UPPER BLACK KIT	
3		5	K1	
4	1465546000	1	COVERS SIDE GREY KIT	
5		2	K1	
6	1465104000	1	SKIRT PROTECTION	
7		4	K1	
8	1465482000	1	HOOK MET. YELLOW FOR BONNET CLOSING	
9		4	K1	
10		2	K1	
11	1466000000	1	COVER UPPER GREY PKD	
12	1465138000	1	COVER UPPER PLAST. BLACK F PETROL VERS.	
13		2	K1	
14		2	K1	
15		2	K1	
16	1464896000	1	LATCH WITH FOLD AWAY	
17		2	K1	
18		1	K1	
19		1	K1	
20		1	K1	
21	1465527000	1	PROTECTION POLY FOR MICROSWITCH	
22		1	K1	
23		2	K1	
24	1465920000	1	FIXING COVER KIT	
K1	1465464000	1	HARDWARE COVERS KIT	[1]

## Part Notes:

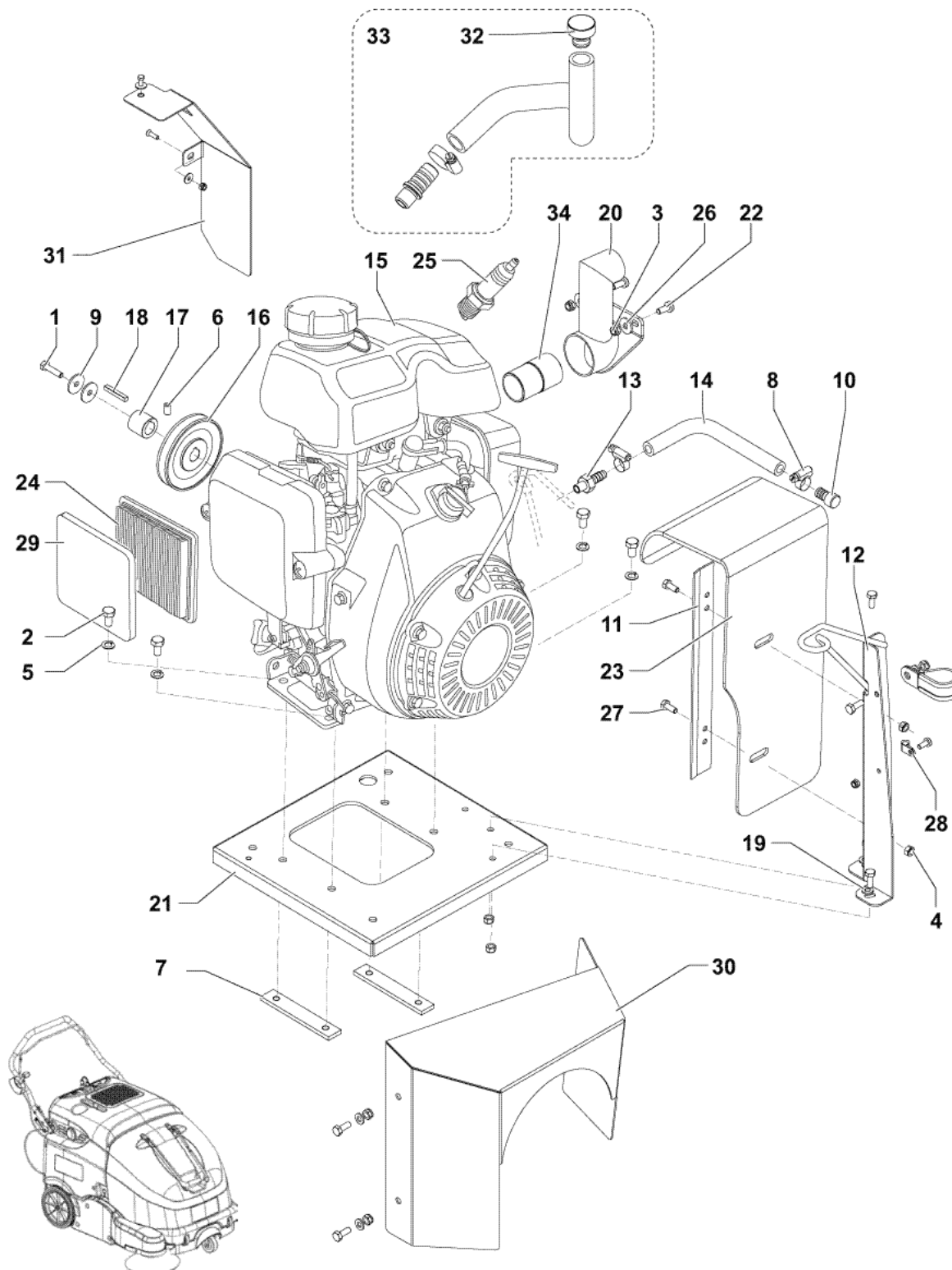
[1] - NOT SHOWN



Pos.	Artikel-Nr.	Menge	Variante	Notes
1	1465303000	1	HARNESS MACHINE P W/EL. SHAKER VERSION	[1]
1	1467626000	1	HARNESS MACHINE P W/EL. SHAKER VERS. SIP	[2]
2	146 1776 000	1	Sicherung 20A	
3	1467035000	1	HOLDER FUSE THERMOPL.UL 94-V0 SIP	
4		2	K1	
5		2	K1	
6	1467615000	1	BRACKET GALV. F SUPP RELAY/FUSES KIT	
7	1465605000	1	CIRCUIT BREAKER 5A KIT	
8		2	K1	
9		2	K1	
10		3	K1	
11	1467617000	1	COVER MET BLACK PETROL EL. SYSTEM KIT	[2]
K1	1465609000	1	HARDWARE ELECTRIC SYSTEM PETROL KIT	[3]

## Part Notes:

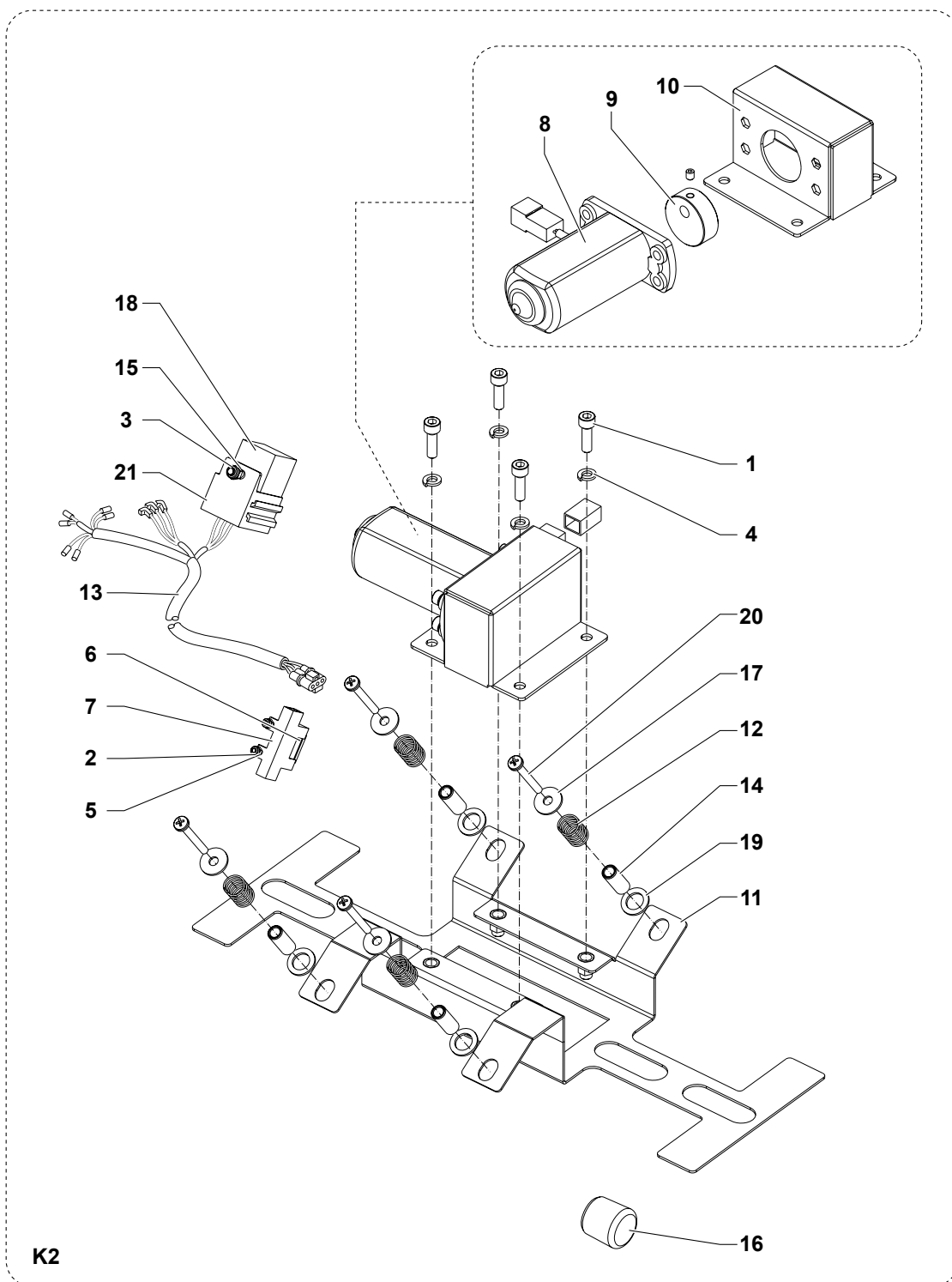
- [1] - STOCK COVERS GUARANTEE UNTIL S/N -  
[2] - STARTING FROM S/N -  
[3] - NOT SHOWN



Pos.	Artikel-Nr.	Menge	Variante	Notes
1		1	K1	
2		4	K1	
3		3	K1	
4		4	K1	
5		4	K1	
6		1	K1	
7		2	K1	
8		2	K1	
9		2	K1	
10		1	K1	
11		1	K1	
12		1	K1	
13		1	K1	
14	1466043000	1	HOSE OIL DRAIN L.280MM SIP	
15	1467870000	1	ENGINE PETROL HONDA GXR120 STAGE V SIP	
16		1	K1	
17		1	K1	
18	146 0830 000	1	Keil 5X5X36 UNI6604A	
19		2	K1	
20	1465304000	1	PIPE EXHAUST	
21	1465225000	1	PLATE ENGINE SUPPORT GALV.	
22		2	K1	
23	1465229000	1	PROTECTION EXHAUST	
24	146 0823 000	1	Luftfilter	
25	146 0822 000	1	Zündkerze	
26		2	K1	
27		2	K1	
28		2	K1	
29	146 0824 000	1	Vorfilter	
30	1465619000	1	CONVEYOR AIR	
31	1465620000	1	PANEL AIRFLOW PAINTED BLACK	
32	1467058000	1	CAP OIL D.18 SIP	
33	1465643000	1	HOSE OIL FILLING KIT	
34	1465550000	1	EXTENSION MET. F MUFFLER	
K1	1465468000	1	HARDWARE ENGINE KIT	[1]

## Part Notes:

[1] - NOT SHOWN



Pos.	Artikel-Nr.	Menge	Variante	Notes
1		4	K1	
2		2	K1	
3		1	K1	
4		4	K1	
5		2	K1	
6	145 9852 000	1	FUSE BLADE 5A UL	
7	1467035000	1	HOLDER FUSE THERMOPL.UL 94-V0 SIP	
8	146 0527 000	1	Filterrüttelmotor f.	
9	1466857000	1	CAM F FILTER SHAKER KIT	
10	1466335000	1	BRACKET FILTER SHAKER PKD	
11		1	K1	
12		4	K1	
13	1465143000	1	HARNES FILTER SHAKER	[1]
14		4	K1	
15		1	K1	
16		1	K1	
17		4	K1	
18	9098441000	1	Relais 12V	
19		4	K1	
20		4	K1	
21	33009104	1	SOCKET F MINI RELAY	[1]
K1	1465473000	1	HARDWARE EL. FILTER SHAKER KIT	[2]
K2	1465474000	1	Filterrüttler Set	[3]
K2	1467677000	1	FILTER SHAKER ELECTRIC KIT	[4]

Part Notes:

- [1] - STOCK COVERS GUARANTEE
- [2] - NOT SHOWN
- [3] - PRUNED ACCESSORY

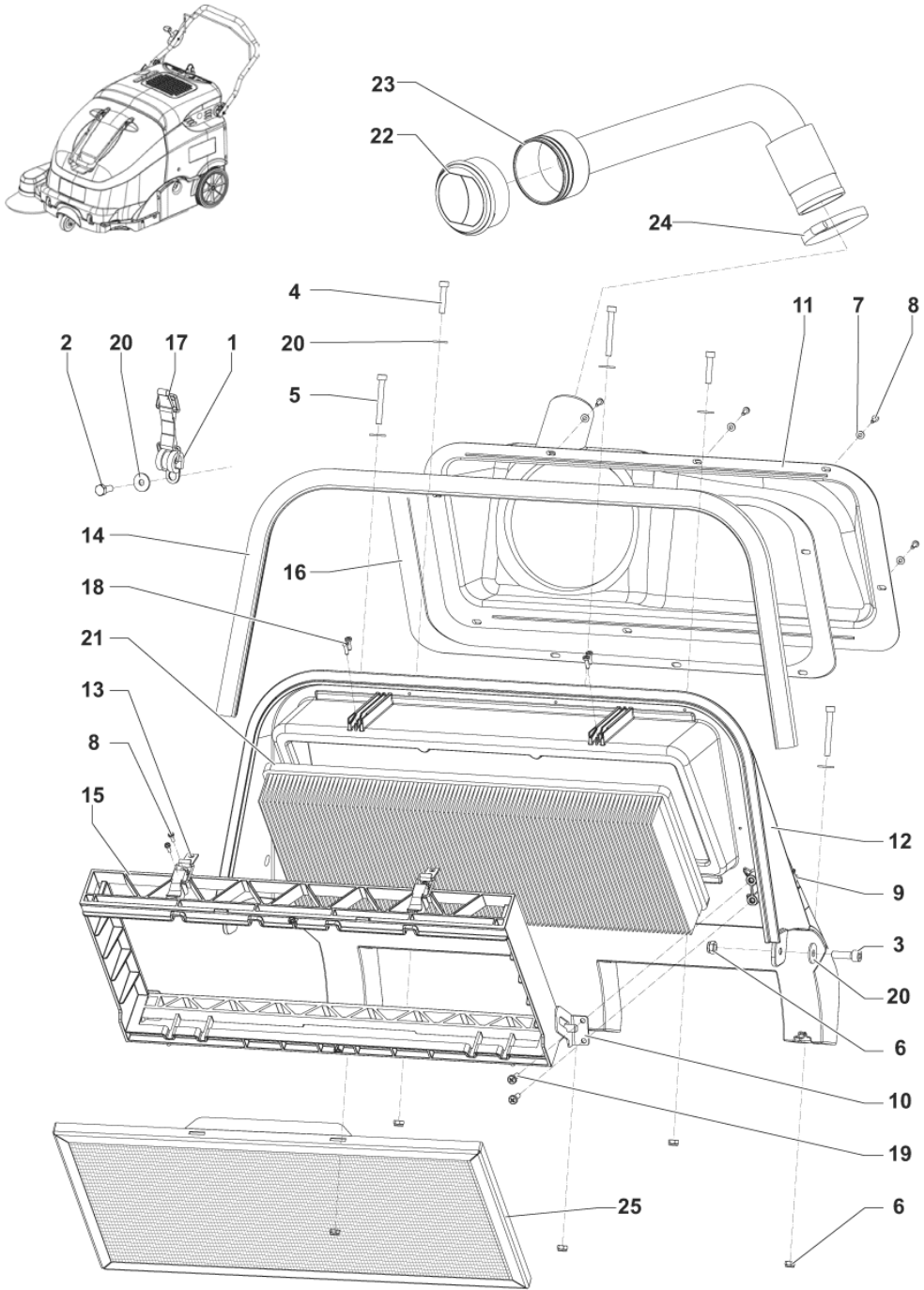
UNTIL S/N -

SEE INST. INSTR. 1465627000

- [4] - STARTING FROM S/N -

SEE INST. INSTR. 1467676000

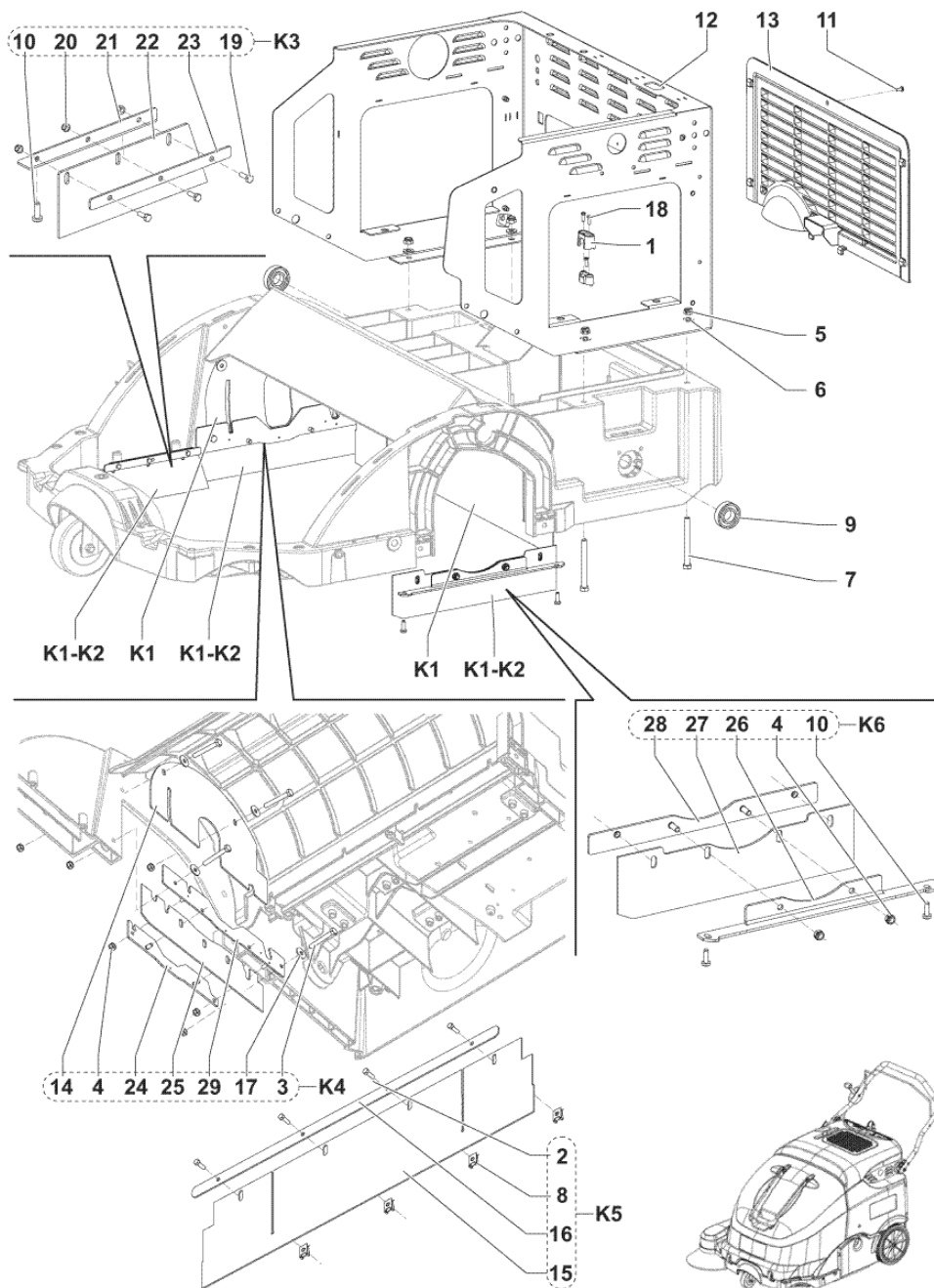




Pos.	Artikel-Nr.	Menge	Variante	Notes
1	33003435	1	DOUBLE COLLAR D5	
2		1	K1	
3		2	K1	
4		2	K1	
5		3	K1	
6		8	K1	
7		8	K1	
8		12	K1	
9	1467722000	1	CLIP GALV.FOR SCREW M5 2 PCS SET	
10		2	K1	
11	1466080000	1	CONVEYOR AIR SIP	
12		1	K1	
13	1464884000	2	LOCK KIT	
14	1465610000	1	GASKET BULB REINFORCED L.1070MM PKD	
15	1465146000	1	FRAME FOR PANEL FILTER	
16	1465517000	1	GASKET FOR CONVEYOR	
17	1465525000	1	LATCH RUBBER	
18		4	K1	
19		4	K1	
20		9	K1	
21	1464691000	1	Filter Polyester	
21	1464902000	1	Filter Papier	[1]
22	33010103	1	Düse (Lüftung)	
23	1464887000	1	HOSE WET BY-PASS	
24	9100001348	1	CLAMP 14/32-52 10 PCS SET	
25	1465018000	1	Vorfilter	[1]
K1	1465472000	1	SUPPORT FILTER KIT	[2]

Part Notes:

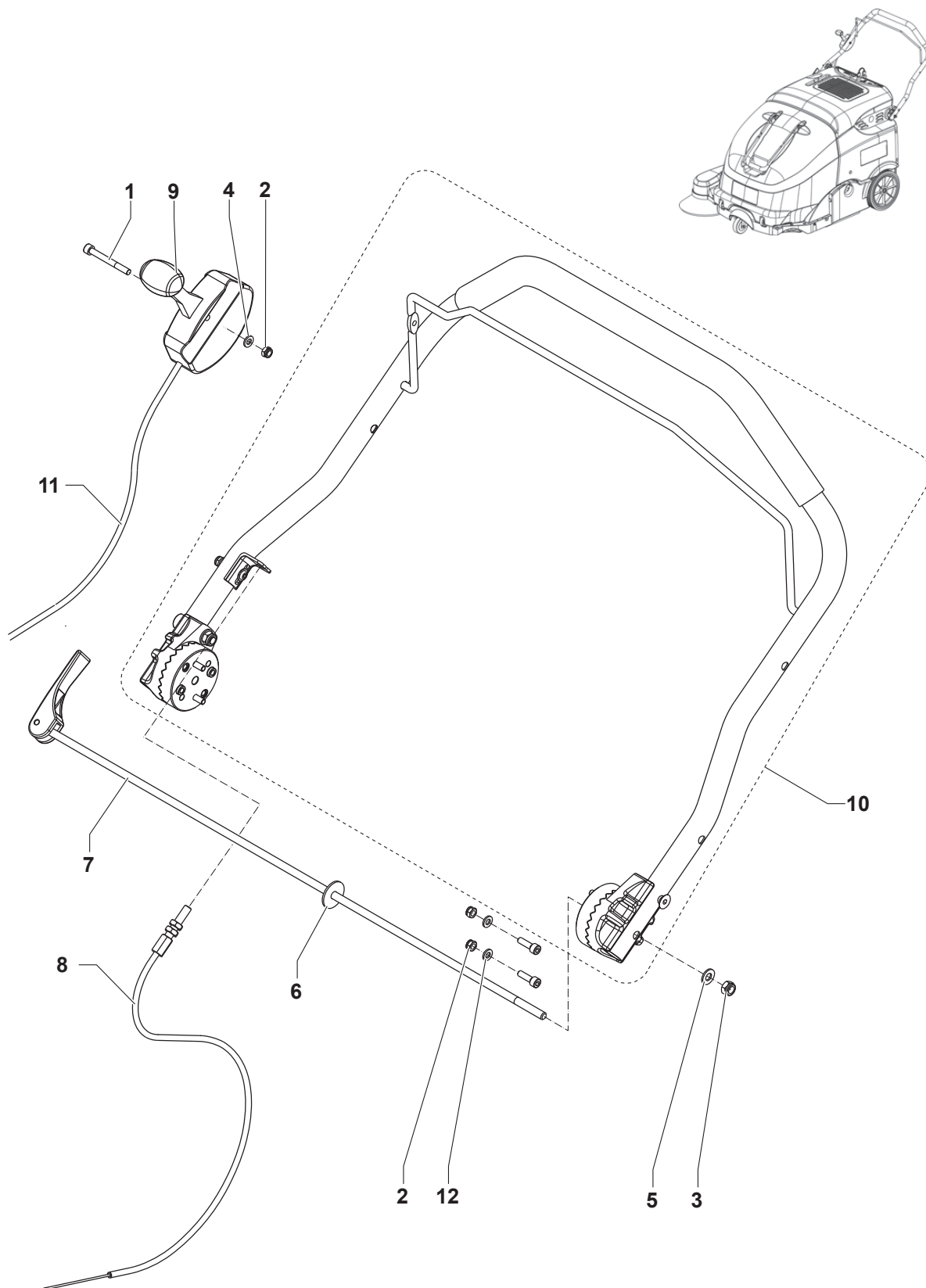
- [1] - OPTIONAL
- [2] - NOT SHOWN



Pos.	Artikel-Nr.	Menge	Variante	Notes
1		1	K7	
2		4	K5-K7	
3		3	K4-K7	
4		6	K4-K7	
5		4	K7	
6		4	K7	
7		4	K7	
8	1467722000	2	CLIP GALV.FOR SCREW M5 2 PCS SET	
9		2	K7	
10		4	K3-K6	
11		1	K7	
12	1464654000	1	CHASSIS REAR	[1]
12	1467619000	1	PANEL MET. BLACK F CHASSIS SIP	[2]
13	1464655000	1	GRID REAR VENTING	
14		1	K1-K4	
15		1	K1-K5	
16		1	K5-K7	
17		2	K4-K7	
18		3	K7	
19		3	K3-K7	
20		3	K3	
21		1	K3	
22		1	K1-K3	
23		1	K3	
24		1	K4	
25		1	K1-K4	
26		1	K6	
27		1	K1-K6	
28		1	K6	
29		1	K4	
K1	1465463000	1	SKIRTS KIT	[3]
K2	1465541000	1	Seitenschürzen-Set, n. mark.	[4]
K3	1465595000	1	SKIRTS RECYCLING KIT	[3]
K4	1465596000	1	SKIRT RIGHT SIDE KIT	[3]
K5	1465597000	1	SKIRT REAR KIT	[3]
K6	1465598000	1	SKIRT LEFT SIDE KIT	[3]
K7	1465462000	1	HARDWARE REAR CHASSIS KIT	[5]

Part Notes:

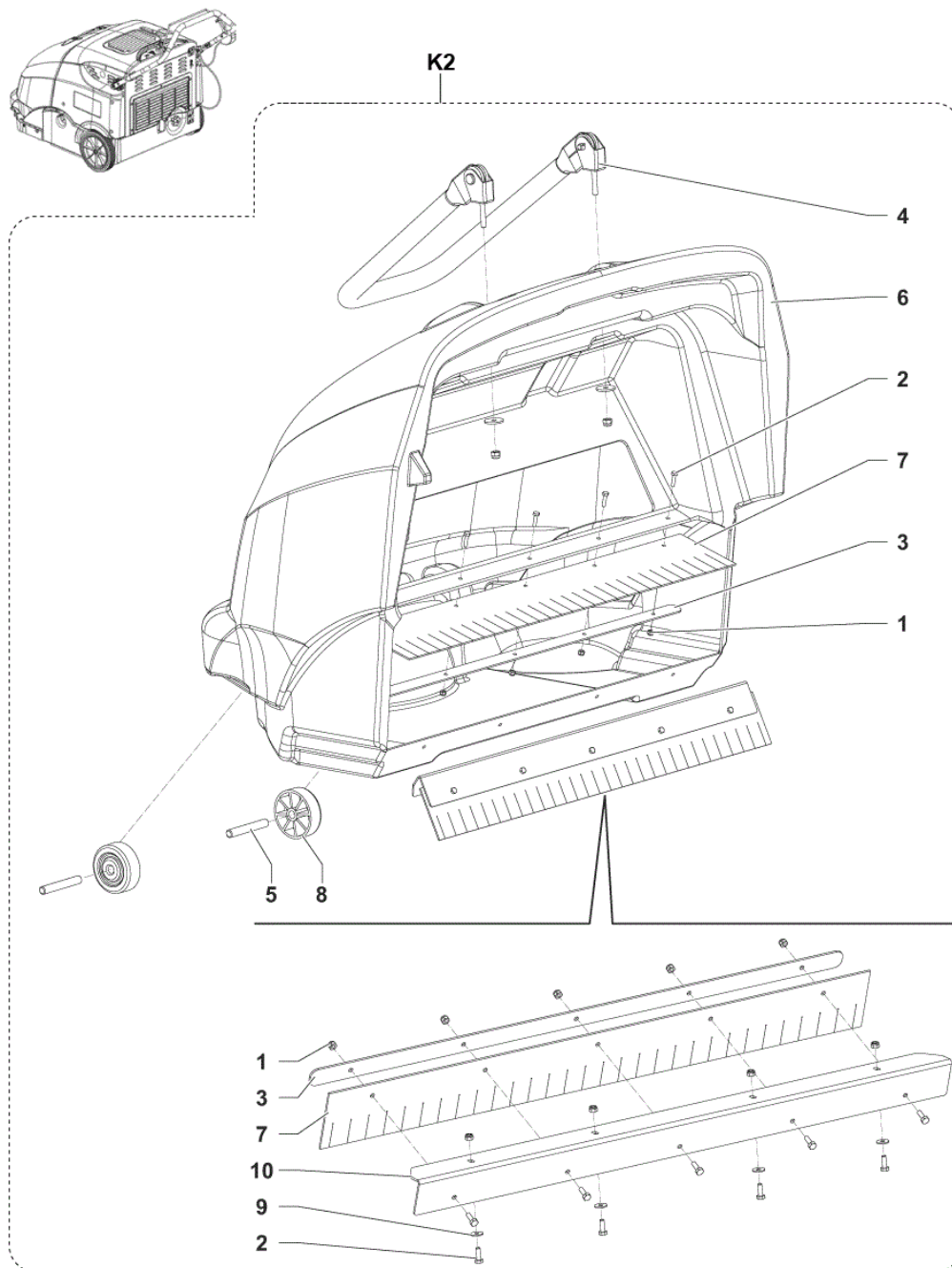
- [1] - GUARANTEE DATE EXPIRED UNTIL S/N -
- [2] - STARTING FROM S/N -
- [3] - STOCK COVERS GUARANTEE UNTIL MACHINE S.No 3810152500015
- [4] - OPTIONAL
- [5] - NOT SHOWN



Pos.	Artikel-Nr.	Menge	Variante	Notes
1		1	K1	
2		6	K1	
3		1	K1	
4		1	K1	
5		1	K1	
6		1	K1	
7	1464673000	1	Hebel	
8	1464908000	1	CABLE TRACTION	
9	1465017000	1	LEVER RIGHT SIDE BROOM CONTROL	
10	1465222000	1	HANDLE BAR STRAIGHT	
11	1465532000	1	CABLE FOR SIDE BROOM LEVER	
12		4	K1	
K1	1465466000	1	HARDWARE HANDLE KIT	[1]

## Part Notes:

[1] - NOT SHOWN

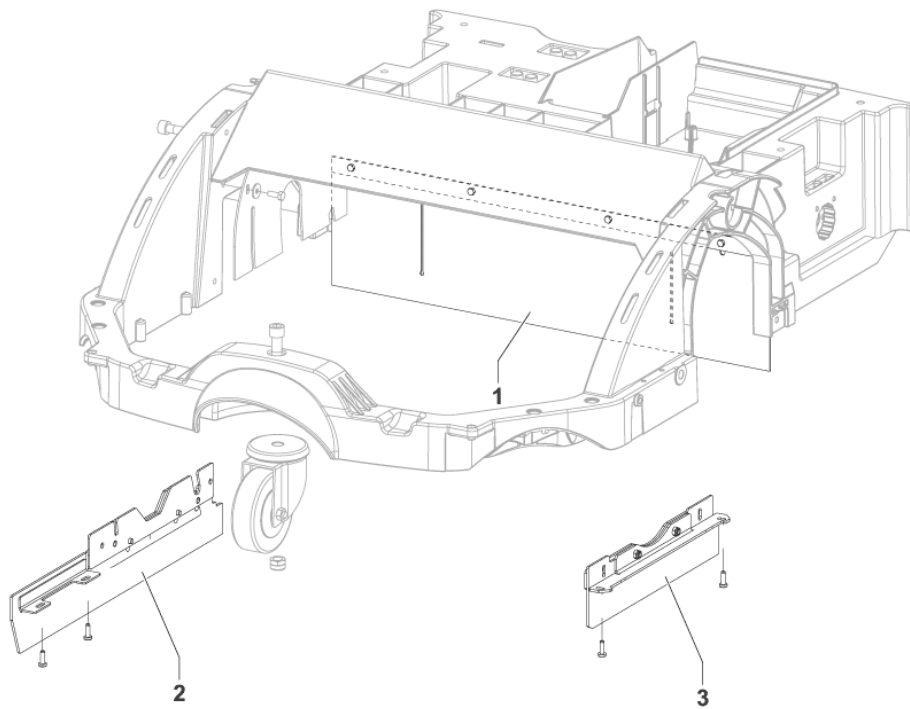


Pos.	Artikel-Nr.	Menge	Variante	Notes
1		14	K1	
2		14	K1	
3		2	K1	
4	1465477000	1	HANDLE WASTE CONTAINER KIT	
5	1464997000	2	PIN D.9.5X70	
6	1465016000	1	CONTAINER WASTE PLAST. GREY	
7	1465476000	1	SKIRTS WASTE CONTAINER KIT	
8	L08602460	2	Ablenkrolle BA 430 S	
9		9	K1	
10		1	K1	
K1	1465475000	1	HARDWARE WASTE CONTAINER KIT	[1]
K2	1465548000	1	CONTAINER WASTE PLAST. GREY KIT	

## Part Notes:

[1] - NOT SHOWN





Pos.	Artikel-Nr.	Menge	Variante	Notes
1	1465597000	1	SKIRT REAR KIT	[1]
1	1466491000	1	SKIRT CENTRAL REAR KIT	[2]
2	1465596000	1	SKIRT RIGHT SIDE KIT	[1]
2	1465595000	1	SKIRTS RECYCLING KIT	[1]
2	1466488000	1	SKIRT RECYCLING RT SIDE KIT	[3]
3	1465598000	1	SKIRT LEFT SIDE KIT	[1]
3	1466490000	1	SKIRT LT SIDE KIT	[4]
3	1466489000	1	SKIRT RECYCLING LT SIDE KIT	[5]
4	1465463000	1	SKIRTS KIT	[6]

## Part Notes:

- [1] - STOCK COVERS GUARANTEE  
TILLMACHINE S.No 3810152500015 - SEE TSB-FC-2015-014
- [2] - STARTING MACHINE S.No 3810152500016 - SEE TSB-FC-2015-014
- [3] - STARTING MACHINE S.No 3810152500016 - SEE TSB-FC-2015-014- INST. INSTR. 1466484000
- [4] - STARTING MACHINE S.No 3810152500016 - SEE TSB-FC-2015-014  
FOR ONE SIDE BROOM ONLY
- [5] - STARTING MACHINE S.No 3810152500016 - SEETSB-FC-2015-014- INST. INSTR. 1466485000  
FOR TWO SIDE BROOMS ONLY
- [6] - STOCK COVERS GUARANTEE

TILLMACHINE S.No 3810152500015 - SEE TSB-FC-2015-014

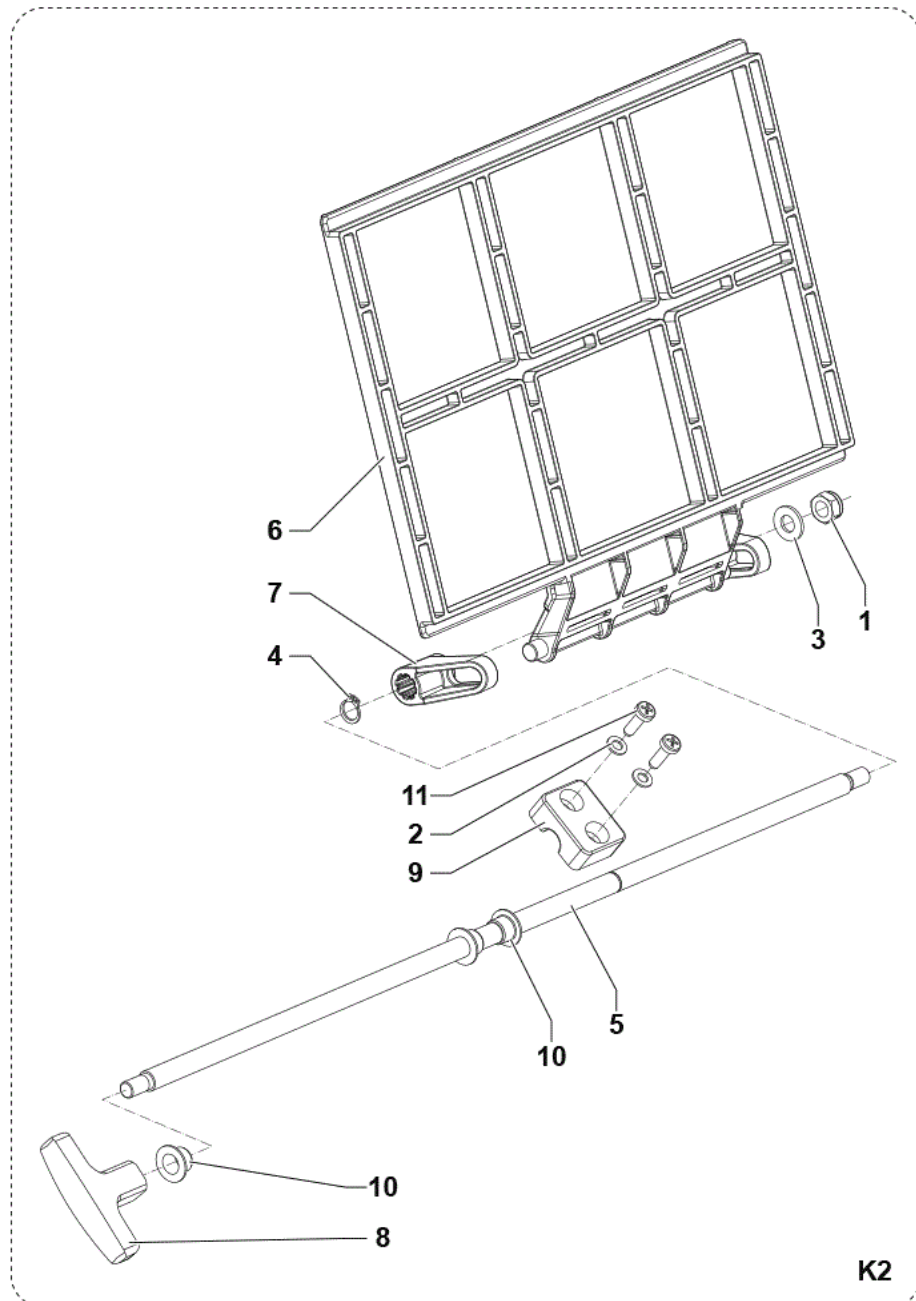
NOT SHOWN (INCLUDED POS. 1, 2, 3)



Pos.	Artikel-Nr.	Menge	Variante	Notes
OM	1465610000	1	GASKET BULB REINFORCED L.1070MM PKD	
EM	1465146000	1	FRAME FOR PANEL FILTER	
NW	1465215000	1	Kehrwalze PP 0,5-0,8 265x600 mm	
NW	1465463000	1	SKIRTS KIT	[1]
EM	1464884000	2	LOCK KIT	
OM	1464691000	1	Filter Polyester	
OM	1464756000	1	DINAMOTOR MP80 12V 200 W	
EM	1464725000	1	REDUCTION GEAR COMPLETE	
NW	146 3035 000	1	Seitenbesen 109x315 mm, PP 0,5	
EM	1466521000	1	GEAR SPUR PLASTIC 150P 50T PKD	
OM	1464433000	1	Kohlebürsten-Kit (4St.)	
OM	1467644000	1	BELT V COGGED XPZ 912 SIP	
EM	1466522000	1	GEAR SPUR PLASTIC 42P 14T PKD	
EM	145 1123 000	3	Lager YAT204	
OM	1467807000	1	BELT V COGGED XPZ 1140 SIP	
OM	1464045000	1	Riemenkit	
EM	1464719000	2	SPRING TORSION 2.8X24	
EM	1464476000	1	KNOB LOBES M10 F. W/YELLOW CAP	
OM	44905699	3	BEARING BALL 6001 2RS PKD	
OM	909 6602 000	1	Lenkrolle	
EM	9100000792	1	MICROSWITCH 16A 250V PKD	
EM	1466506000	1	MICROSWITCH 10A 250V PKD	
OM	1465999000	1	REDUCTION GEARMOTOR 40W 12V PKD	
OM	1464908000	1	CABLE TRACTION	
EM	1465017000	1	LEVER RIGHT SIDE BROOM CONTROL	
EM	1465532000	1	CABLE FOR SIDE BROOM LEVER	
OM	146 0823 000	1	Luftfilter	
OM	146 0822 000	1	Zündkerze	
EM	146 1318 000	4	Silentbloc zu SW 700 SP	
OM	146 0824 000	1	Vorfilter	

Part Notes:

[1] - STOCK COVERS GUARANTEE

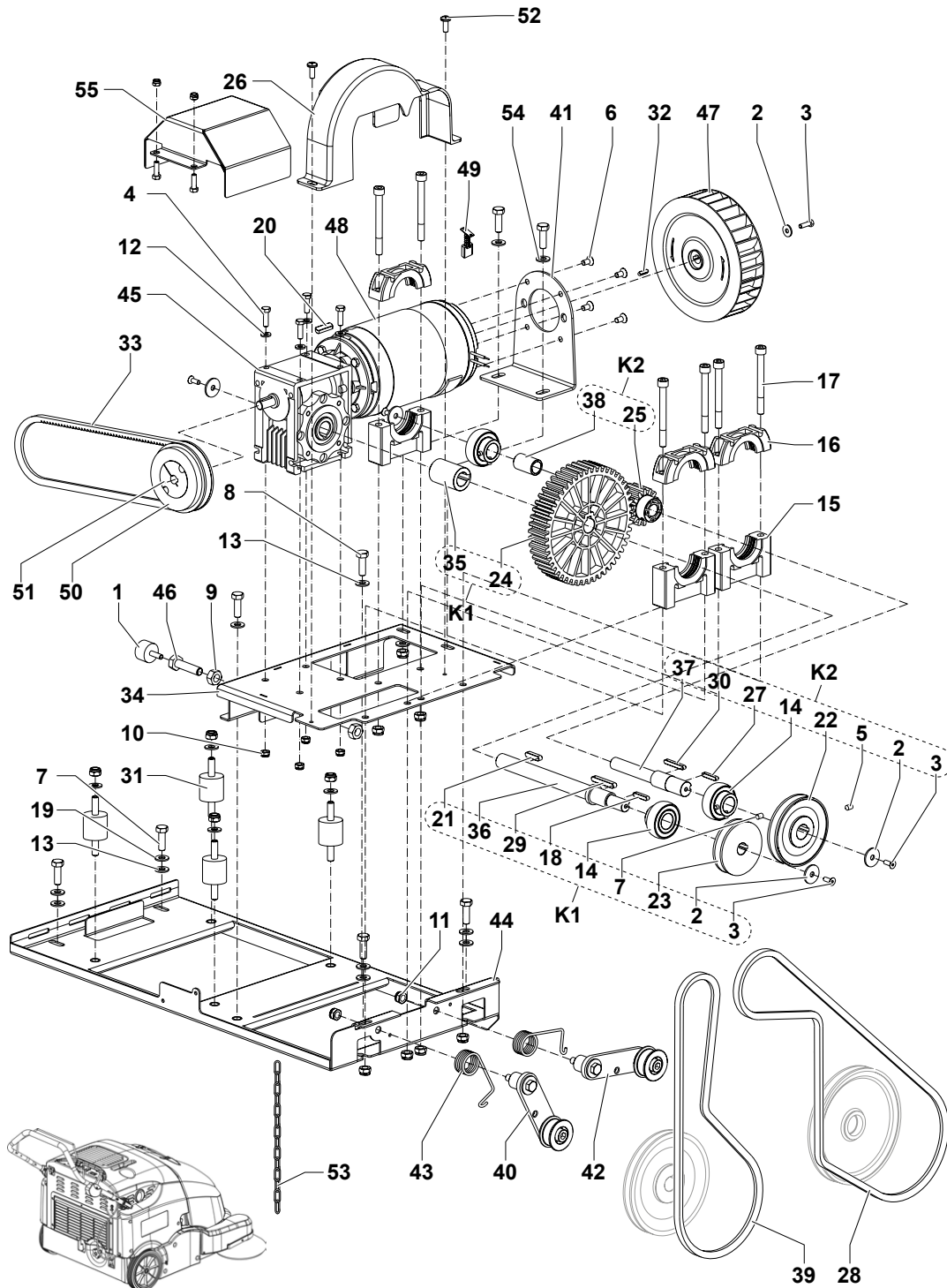


K2

Pos.	Artikel-Nr.	Menge	Variante	Notes
1		1	K1	
2		2	K1	
3		1	K1	
4		1	K1	
5	1465028000	1	ROD FILTER SHAKER GALV.	
6	1465029000	1	RAKE FILTER SHAKER	
7	1465030000	2	DRAGGER FILTER SHAKER PLAST.	
8	1465103000	1	HANDLE T M8 PLASTIC	
9		1	K1	
10		3	K1	
11		2	K1	
K1	1465479000	1	HARDWARE MANUAL FILTER SHAKER KIT	[1]
K2	1465480000	1	Filterrüttler Set manuell	[2]

## Part Notes:

- [1] - NOT SHOWN  
[2] - OPTIONAL - INSTALLATION INSTRUCTION REF. 1465626000



# TRANSMISSION SYSTEM

SW900 P NIL

2021.06.22

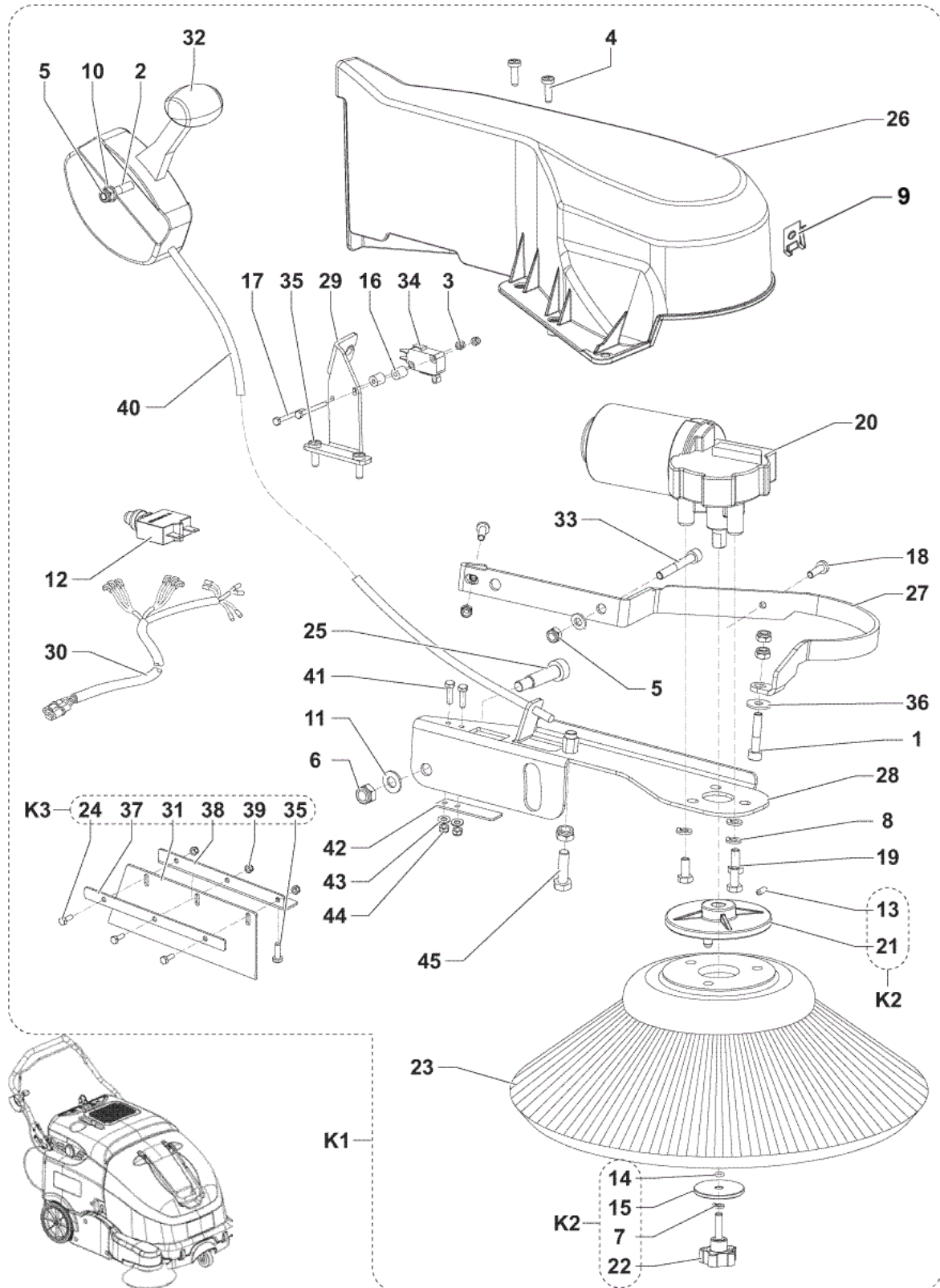
2021.06.24

Pos.	Artikel-Nr.	Menge	Variante	Notes
1	33003131	1	Dämpfer	
2		5	K1-K2-K3	
3		5	K1-K2-K3	
4		4	K3	
5		1	K2	
6		4	K3	
7		2	K1	
8		8	K2	
9		2	K3	
10		4	K3	
11		12	K3	
12		6	K3	
13		10	K1-K2	
14	145 1123 000	3	Lager YAT204	
15	145 1976 000	3	Lagerbock unten	
16	145 1977 000	3	Lagerbock oben	
17		6	K3	
18		1	K1	
19		6	K3	
20		1	K3	
21		1	K1	
22		1	K2	
23		1	1K	
24	1466521000	1	GEAR SPUR PLASTIC 150P 50T PKD	
25	1466522000	1	GEAR SPUR PLASTIC 42P 14T PKD	
26	146 0605 000	1	Deckel	
27		1	K2	
28	1467807000	1	BELT V COGGED XPZ 1140 SIP	
29		1	K1	
30		1	K2	
31	146 1318 000	4	Silentbloc zu SW 700 SP	
32		1	K2	
33	1464045000	1	Riemenkit	
34	1464681000	1	SUPPORT GALV. GEAR BOX	
35		1	K1	
36		1	K1	
37		1	K2	
38		1	K2	
39	1467644000	1	BELT V COGGED XPZ 912 SIP	
40	1465601000	1	TENSIONER BELT WHEELS KIT	
41	1464703000	1	SUPPORT BEARING	
42	1465602000	1	TENSIONER BELT BROOM KIT	
43	1464719000	2	SPRING TORSION 2.8X24	
44	1467622000	1	PLATE TRANSMISSION SUPPORT GALV SIP	
45	1464725000	1	REDUCTION GEAR COMPLETE	
46		1	K3	
47	1464747000	1	FAN D.160 X40	
48	1464756000	1	DINAMOTOR MP80 12V 200 WDINAMOTOR MP80 12V 198 W	
49	1464433000	1	Kohlebürsten-Kit (4St.)BRUSH CARBON KIT 4PCS	
50	1465298000	1	PULLEY POGGILOCK SPZ PD. 85	
51	1465299000	1	TAPERBUSH POGGILOCK 1210 D.11	
52		2	K3	
53	1465607000	1	CHAIN GROUND KIT	
54		4	K3	
55	1467620000	1	COVER MET.BLACK F MOTOR KIT	[1]
K1	1466784000	1	SHAFT TRACTION KIT	
K2	1466785000	1	SHAFT BROOM KIT	
K3	1465467000	1	HARDWARE TRASMISSION KIT	[2]



Part Notes:

- [1] - STARTING FROM S/N -
- [2] - NOT SHOWN



## LEFT BROOM (OPTIONAL)

SW900 P NIL

2018.01.10

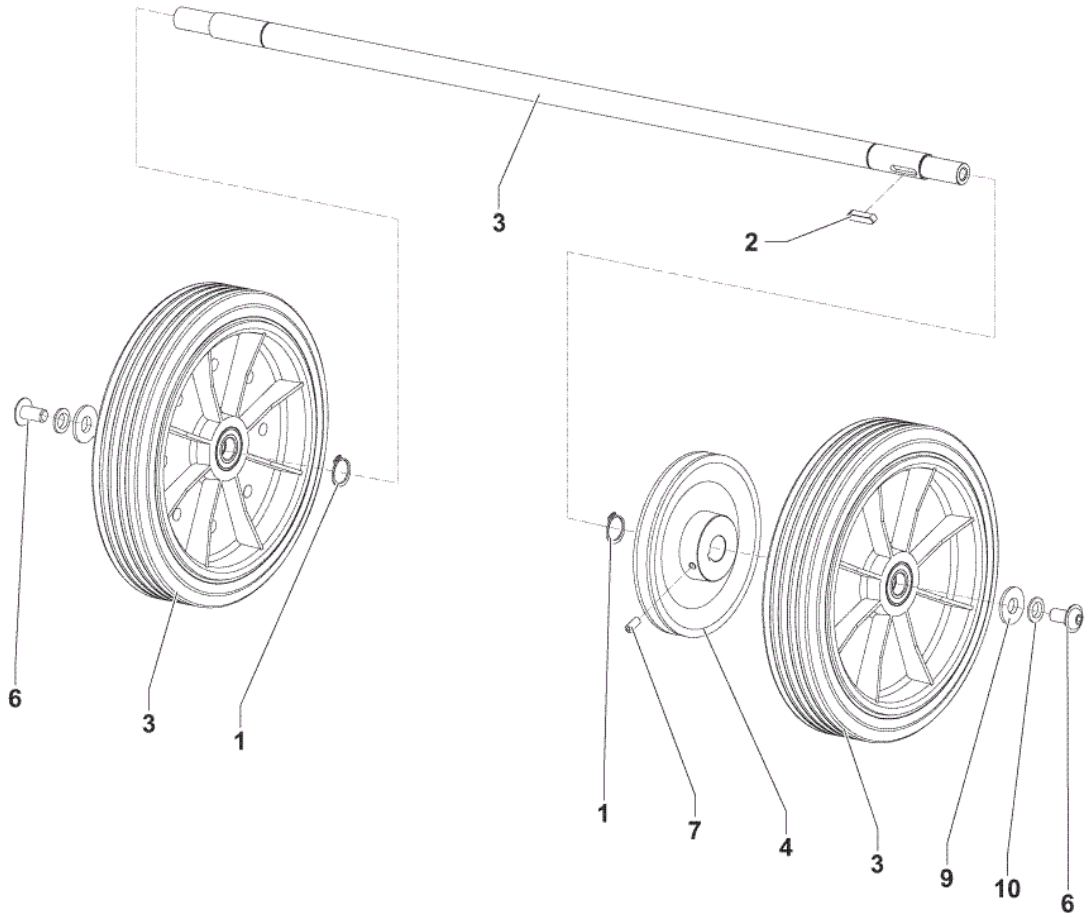
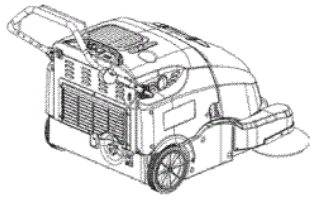
2018.01.18

Pos.	Artikel-Nr.	Menge	Variante	Notes
1		1	K4	
2		1	K4	
3		2	K4	
4		2	K4	
5		4	K4	
6		2	K4	
7		1	K2	
8		3	K4	
9	1467722000	1	CLIP GALV.FOR SCREW M5 2 PCS SET	
10		2	K4	
11		1	K4	
12	1465605000	1	CIRCUIT BREAKER 5A KIT	
13		1	K2	
14		1	K2	
15		1	K2	
16		2	K4	
17		2	K4	
18		2	K4	
19		3	K4	
20	1465999000	1	REDUCTION GEARMOTOR 40W 12V PKD	
21		1	K2	
22		1	K2	
23	146 3035 000	1	Seitenbesen 109x315 mm, PP 0,5	
23	146 3036 000	1	Seitenbesen 145x300 mm, Nylon	[1]
24		3	K3	
25		1	K4	
26	1464676000	1	COVER LEFT SIDE BROOM	
27	1465498000	1	BUMPER LEFT BROOM	
28	1465012000	1	SUPPORT LEFT SIDE BROOM	
29	1465014000	1	SUPPORT LEFT SIDE BROOM SWITCH	
30	1465142000	1	HARNES LEFT BROOM	
31		1	K3	
32	1465183000	1	LEVER W/CABLE LT SIDE BROOM CTRL	
33		1	K4	
34	9100000792	1	MICROSWITCH 16A 250V PKD	
35		4	K3-K4	
36		2	K4	
37		1	K3	
38		1	K3	
39		3	K3	
40	1465532000	1	CABLE FOR SIDE BROOM LEVER	
41		2	K4	
42		1	K4	
43		2	K4	
44		2	K4	
45		1	K4	
K1	1465408000	1	Seitenbesen-Set, links, PP	[2]
K1	1466497000	1	BROOM LEFT SIDE PPL W/RECYCLING KIT	[3]
K2	1463865000	1	Schraube SB SW 750	
K3	1465595000	1	SKIRTS RECYCLING KIT	[4]
K3	1466489000	1	SKIRT RECYCLING LT SIDE KIT	[5]
K4	1465471000	1	HARDWARE SIDE BROOM KIT	[6]

## Part Notes:

- [1] - OPTIONAL
- [2] - OPTIONAL - UNTIL S/N 3810152500015 - INST.INSTR.1465407000
- [3] - STARTING MACHINE S.No 3810152500016 - SEE TSB-FC-2015-014- INST. INSTR. 1466499000
- [4] - STOCK COVERS GUARANTEE UNTIL S/N 3810152500015

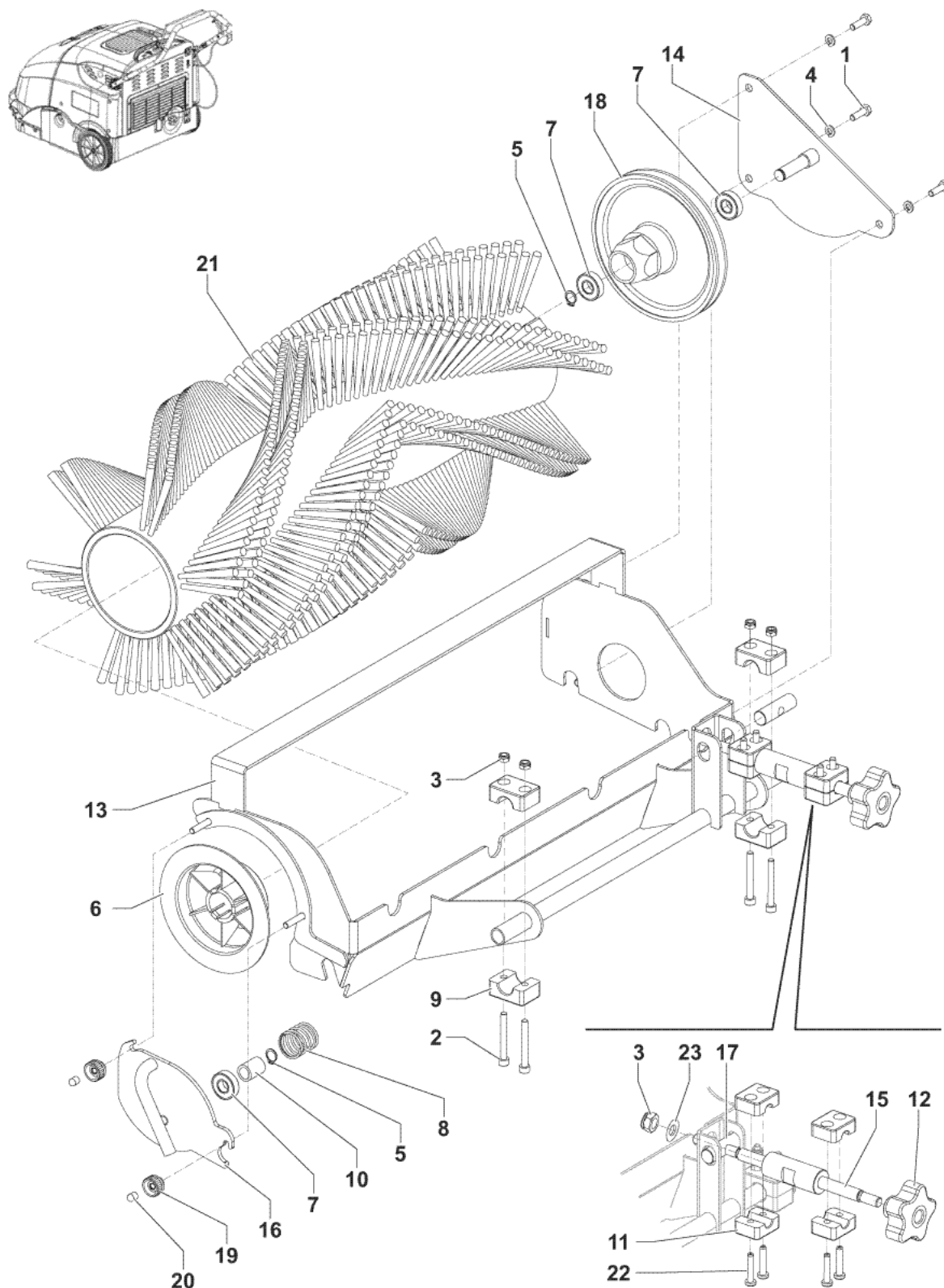
- [5] - STARTING MACHINE S.No 3810152500016 - SEE TSB-FC-2015-014- INST. INSTR. 1466485000
- [6] - NOT SHOWN



Pos.	Artikel-Nr.	Menge	Variante	Notes
1		2	K1	
2		1	K1	
3	1466077000	1	Schaft Kit Antriebsrad	[1]
4		1	K1	
6		2	K1	
7		1	K1	
9		2	K1	
10		2	K1	
K1	1465469000	1	HARDWARE WHEELS KIT	[2]

Part Notes:

- [1] - TSB-FC-2014-039
- [2] - NOT SHOWN

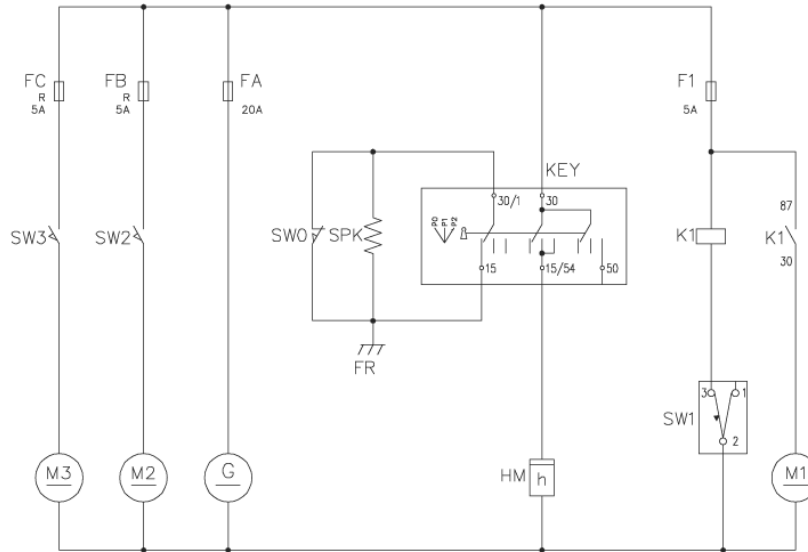


Pos.	Artikel-Nr.	Menge	Variante	Notes
1		3	K1	
2		4	K1	
3		5	K1	
4		3	K1	
5		2	K1	
6	1467023000	1	HUB LEFT MAIN BROOM PKD	
7	44905699	3	BEARING BALL 6001 2RS PKD	
8		1	K1	
9		2	K1	
10		1	K1	
11		2	K1	
12	1464476000	1	KNOB LOBES M10 F. W/YELLOW CAP	
13	1465487000	1	SUPPORT MAIN BROOM GALV.	
14	1467589000	1	SUPPORT BROOM PULLEY GALV. SIP	
15	1464689000	1	SCREW BROOM ADJUSTMENT	
16	1467590000	1	SUPPORT IDLE HUB SIP	
17		1	K1	
18	1467808000	1	PULLEY MAIN BROOM SIP	
19	1464885000	2	KNOB KNURLED M6 FEMALE PLASTIC	
20		2	K1	
21	1465215000	1	Kehrwalze PP 0,5-0,8 265x600 mm	
21	1466493000	1	BROOM MAIN 265X620 10R PPL 0.3-0.5	[1]
21	1465216000	1	Kehrwalze PP Mix 5 265x600 mm	[2]
21	146 0750 000	1	Kehrwalze 265x600 mm, Stahlmix	[2]
22		4	K1	
23		1	K1	
K1	1465470000	1	HARDWARE MAIN BROOM KIT	[3]

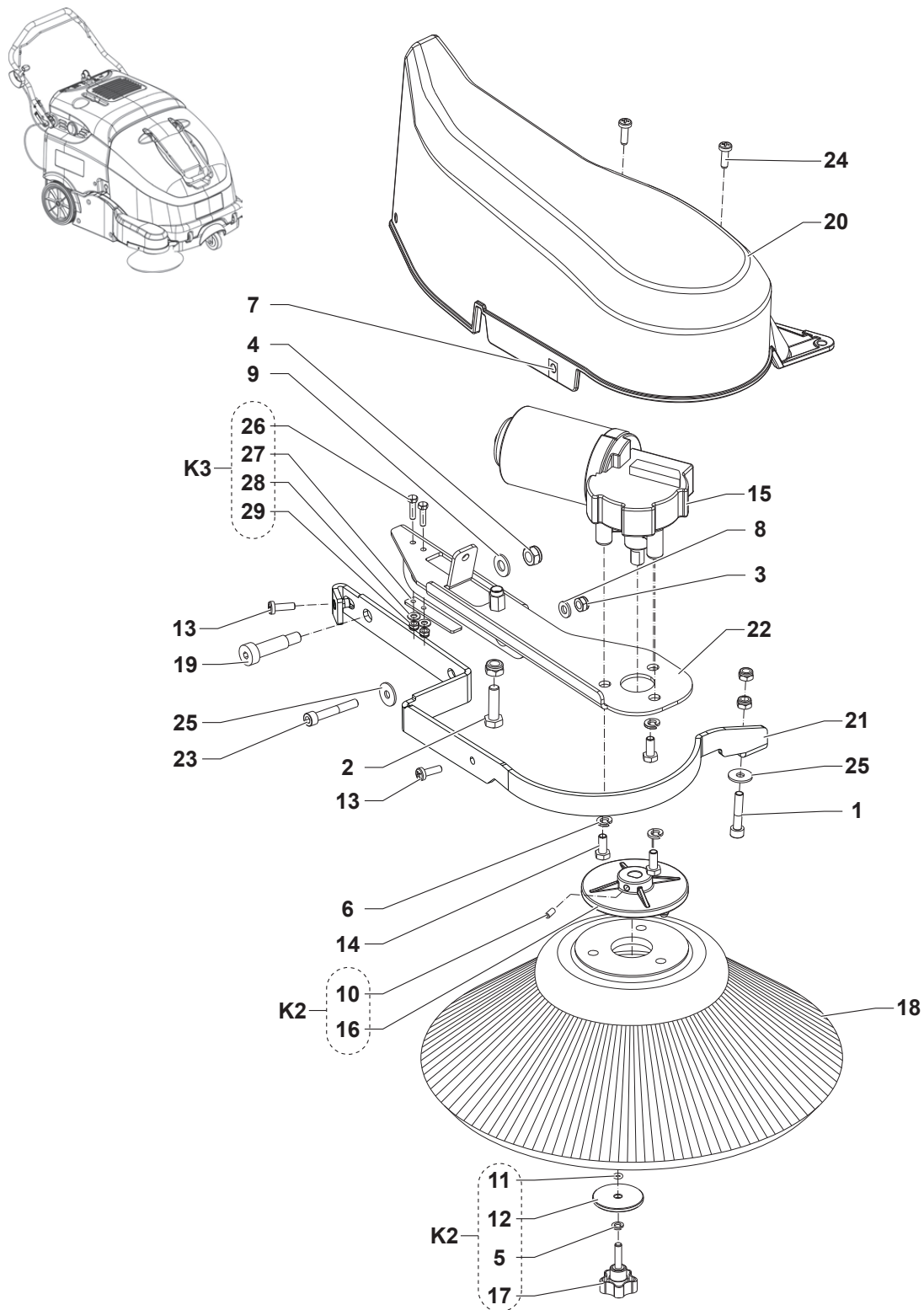
Part Notes:

- [1] - STARTING MACHINE S.No 3810152500016 - SEE TSB-FC-2015-014  
DE TSB-FC-2015-014 SW900 Floortec 760 neue Schürzen
- [2] - OPTIONAL
- [3] - NOT SHOWN





Pos.	Artikel-Nr.	Menge	Variante	Notes
F1	145 9852 000		FUSE BLADE 5A UL	
FA	146 1776 000		Sicherung 20A	
FB	1465605000		CIRCUIT BREAKER 5A KIT	
FC	1465605000		CIRCUIT BREAKER 5A KIT	
FR				
G	1464756000		DINAMOTOR MP80 12V 200 W	
HM	9096951000		Betriebsstundenzähler 24V	
K1	9098441000		Relais 12V	
KEY	33020442		Schlüsselschalter	
M1	146 0527 000		Filterrüttelmotor f.	
M2	1465999000		REDUCTION GEARMOTOR 40W 12V PKD	
M3	1465999000		REDUCTION GEARMOTOR 40W 12V PKD	
SPK	146 0822 000		Zündkerze	
SW0	1466506000		MICROSWITCH 10A 250V PKD	
SW1	1465465000		Schalterkit	
SW2	9100000792		MICROSWITCH 16A 250V PKD	
SW3	9100000792		MICROSWITCH 16A 250V PKD	



Pos.	Artikel-Nr.	Menge	Variante	Notes
1		1	K1	
2		1	K1	
3		3	K1	
4		2	K1	
5		1	K2	
6		3	K1	
7	1467722000	1	CLIP GALV.FOR SCREW M5 2 PCS SET	
8		1	K1	
9		1	K1	
10		1	K2	
11		1	K2	
12		1	K2	
13		2	K1	
14		3	K1	
15	1465999000	1	REDUCTION GEARMOTOR 40W 12V PKD	
16		1	K2	
17		1	K2	
18	146 3035 000	1	Seitenbesen 109x315 mm, PP 0,5	
18	146 3036 000	1	Seitenbesen 145x300 mm, Nylon	[1]
19		1	K1	
20	1464675000	1	Abdeckung Bürste rechts	
21	1465497000	1	BUMPER RIGHT BROOM	
22	1465011000	1	SUPPORT RIGHT SIDE BROOM	
23		1	K1	
24		2	K1	
25		2	K1	
26		2	K3	
27		1	K3	
28		2	K3	
29		2	K3	
K1	1465471000	1	HARDWARE SIDE BROOM KIT	[2]
K2	1463865000	1	Schraube SB SW 750	
K3	1467691000	1	PADDLE FOR DRIVE MICROSWITCH KIT	[2]

Part Notes:

- [1] - OPTIONAL
- [2] - NOT SHOWN



Pos.	Artikel-Nr.	Menge	Variante	Notes
			NORMAL WEAR	
NW	1465215000	1	Kehrwalze PP 0,5-0,8 265x600 mm	
NW	1466493000	1	BROOM MAIN 265X620 10R PPL 0.3-0.5	
NW	1466491000		SKIRT CENTRAL REAR KIT	
NW	1466488000	1	SKIRT RECYCLING RT SIDE KIT	
NW	1466490000	1	SKIRT LT SIDE KIT	
			ORDINARY MAINTENANCE	
NW	146 3035 000	1	Seitenbesen 109x315 mm, PP 0,5	
OM	1465610000	1	GASKET BULB REINFORCED L.1070MM PKD	
OM	1464691000	1	Filter Polyester	
OM	1464756000	1	DINAMOTOR MP80 12V 200 W	
OM	1464433000	1	Kohlebürsten-Kit (4St.)	
OM	1467644000	1	BELT V COGGED XPZ 912 SIP	
OM	1467807000	1	BELT V COGGED XPZ 1140 SIP	
OM	1464045000	1	Riemenkit	
OM	44905699	3	BEARING BALL 6001 2RS PKD	
OM	909 6602 000	1	Lenkrolle	
OM	1465999000	1	REDUCTION GEARMOTOR 40W 12V PKD	
OM	1464908000	1	CABLE TRACTION	
OM	146 0823 000	1	Luftfilter	
OM	146 0822 000	1	Zündkerze	
			EXTRAORDINARY MAINTENANCE	
OM	146 0824 000	1	Vorfilter	
EM	1465146000	1	FRAME FOR PANEL FILTER	
EM	1464884000	2	LOCK KIT	
EM	1464725000	1	REDUCTION GEAR COMPLETE	
EM	1466521000	1	GEAR SPUR PLASTIC 150P 50T PKD	
EM	1466522000	1	GEAR SPUR PLASTIC 42P 14T PKD	
EM	145 1123 000	3	Lager YAT204	
EM	1464719000	2	SPRING TORSION 2.8X24	
EM	1464476000	1	KNOB LOBES M10 F. W/YELLOW CAP	
EM	9100000792	1	MICROSWITCH 16A 250V PKD	
EM	1466506000	1	MICROSWITCH 10A 250V PKD	
EM	1465017000	1	LEVER RIGHT SIDE BROOM CONTROL	
EM	1465532000	1	CABLE FOR SIDE BROOM LEVER	
EM	146 1318 000	4	Silentbloc zu SW 700 SP	

